

International Cooperation

Agenda 14.4



Food and Agriculture Organization
of the United Nations



International Plant
Protection Convention

Schedule:

Presentation by WCO: Ozlem SOYSANLI

Panel presentations:

1. **CABI:** Washington OTIENO
2. **CBD:** Junko SHIMURA
3. **IAEA:** Rui CARDOSO PEREIRA
4. **WBG:** Shane SELA
5. **STDF:** Melvin SPREIJ
6. **WTO:** Anneke HAMILTON

Questions and answers





WORLD CUSTOMS ORGANIZATION
ORGANISATION MONDIALE DES DOUANES

World Customs Organization

The 14th Session of the Commission
on Phytosanitary Measures
(CPM-14)

Rome, Italy, 1-5 April 2019



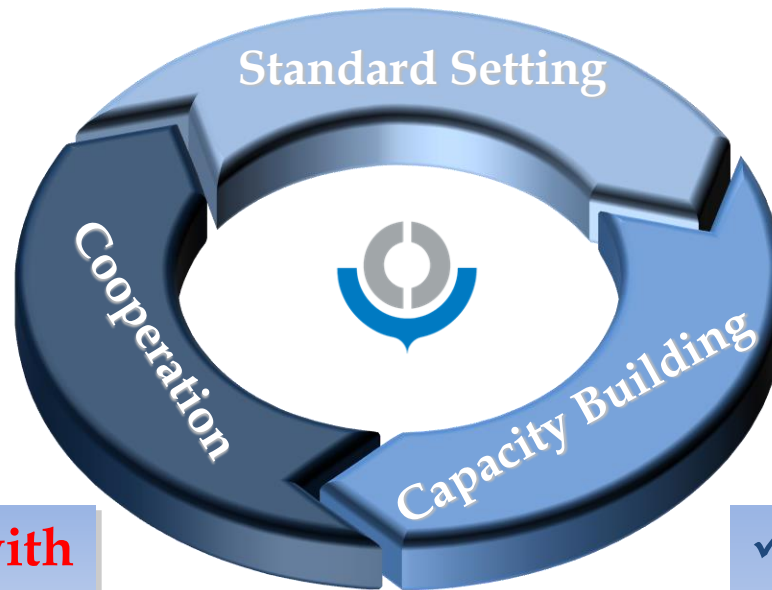


- 🌐 Independent Intergovernmental Organization
 - 🌐 Established in 1952 as the Customs Cooperation Council
 - 🌐 **26 January;** International Customs Day
 - 🌐 183 Members
 - 🌐 Headquarters in Brussels
- “The WCO provides leadership, guidance and support to Customs administrations to secure and facilitate legitimate trade, realize revenues, protect society and build capacity”*

Key Functions of the WCO



✓ Capability and responsibility for global standard setting for Customs



✓ **Cooperation with other international organizations and other agencies**

✓ Capacity Building
✓ Network of accredited experts from Customs Administrations
✓ Donor engagement

International Customs Day 2019



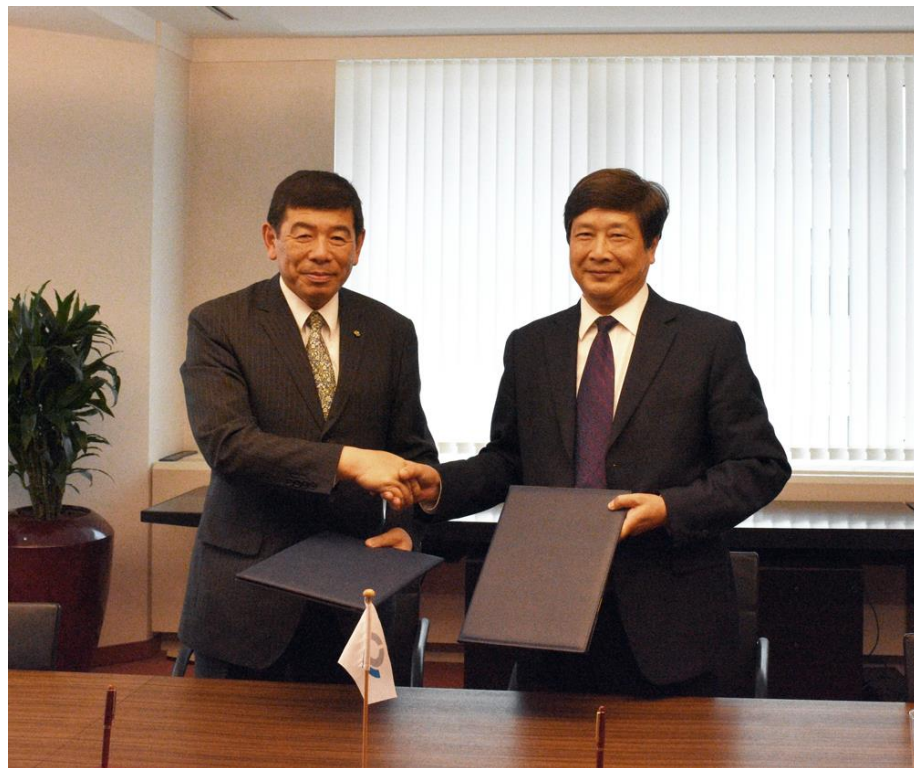
- 🕒 **S**ecure,
- 🕒 **M**easurable,
- 🕒 **A**utomated,
- 🕒 **R**isk Management-based and
- 🕒 **T**echnology-driven.

BORDERS



Cooperation between WCO and IPPC

Agreement signed on 19 June 2018



WCO and IPPC join forces to facilitate trade whilst protecting societies from undesirable effects



- 🌀 Electronic Data Exchange (ePhyto),
- 🌀 ECommerce,
- 🌀 Sea Containers,
- 🌀 Single Window and
- 🌀 Communication and Advocacy

Cooperation between WCO and IPPC

Joint Work Plan agreed on 18 March 2019



Seven areas of cooperation

- Joint events, especially in the area of trade facilitation;
- Communication and advocacy;
- Cross-border e-commerce;
- Electronic data exchange (e-Phyto);
- Sea containers;
- Single Window; and
- Time Release Study.



Cooperation between WCO and IPPC

Ongoing joint work

- 🌀 IPPC Sea Container Task Force (SCTF)
- 🌀 IPPC ePHYTO Project Advisory Committee (PAC)

“2020 The International Year of Plant Health (IYPH)”



Thank you for your attention!

For more information:

<http://www.wcoomd.org>

Özlem SOYSANLI
Technical Officer
Procedures and Facilitation Sub-Directorate
ozlem.soyosanli@wcoomd.org

Copyright © 2019 World Customs
Organization. All rights reserved.
Requests and inquiries concerning
translation, reproduction and adaptation
rights should be addressed to
copyright@wcoomd.org

International Cooperation Agenda 14.4

PANEL PRESENTATIONS

**Highlights of contributions from several
international organizations towards helping
to develop plant health capacity**



Food and Agriculture Organization
of the United Nations



International Plant
Protection Convention

UP NEXT:

→ **CABI**



Food and Agriculture Organization
of the United Nations



International Plant
Protection Convention



PRA Decision Support Tools

Washington Otieno
CPM-14, Rome, April 1-5, 2019



Key elements in managing pest risks

- Preparedness
 - Accurate early warning at intra-country, country or regional levels that would enable rapid response to emerging threats
- Detection
 - Convergence on surveillance data from activities conducted by multiple agencies
- Response
 - Data driven decisions on choice of actions



Advisory services & plant health

- Advisory services continue to be largely curative rather than preventive
 - characterized by missed opportunities for early interventions & lack of demonstrable benefits from investments in pest management.
- Examples of these in recent times - since mid-2000s in Africa alone
 - *Bactrocera dorsalis*, *Tuta absoluta*, *Spodoptera frugiperda*, BXW, MLND, etc.
- Lack of effective response systems to deal with endemics that are still not widely distributed
 - *Fusarium oxysporum* fsp. *cubense* TR4, CBSV
- **Implication:** pest introductions continue to be an underlying problem and master plans required to guide prioritization of investments in plant protection activities.

Pest Risk Analysis Tool

Targeted users: risk assessors in NPPOs

Built on CABI's **Crop Protection Compendium (CPC)** data

Phase 1: commodity-initiated PRA – released for trial by CPC subscribers, January 2019

Phase 2: full launch to include pest-initiated PRA and other improvements, Q4, 2019

CPC subscribers can register *now* to test PRA Tool (beta)

Overview

- User requirements gathered through surveys and 2 African regional workshops
- Provided as an optional add-on to the CPC for subscribers
- CPC and PRA Tool to be made available to NPPOs in Low-Income countries through donor support
- Workflow is based on the design of the CPC CD-ROM PRA module
- Aligned to IPPC international standards (e.g. ISPM 11)



Home > Initiation: By Pathway > Pest list

Session#: P00057

Import of tomato from South Africa to Zambia

1. Pest lists and risk assessments

2. Pest risk management

3. Pest risk analysis summary

Categorized pest lists

Pests have been categorized into two lists based on CABI's distribution data and details of crop and commodity types entered at the initiation stage. Select which list to view below:

- ☒ Pests potentially requiring phytosanitary measures
- ☐ Pests excluded from assessment

Or view both lists by downloading the full pest list: [Download full pest list](#)

86 Pests potentially requiring phytosanitary measures

Pests recorded on selected crop, recorded as present in the exporting country and not recorded or recorded as absent in the importing country or present with special regulatory status. Individual risk assessment can be completed on pests included in this table.

Use the 'user action' button *** to:

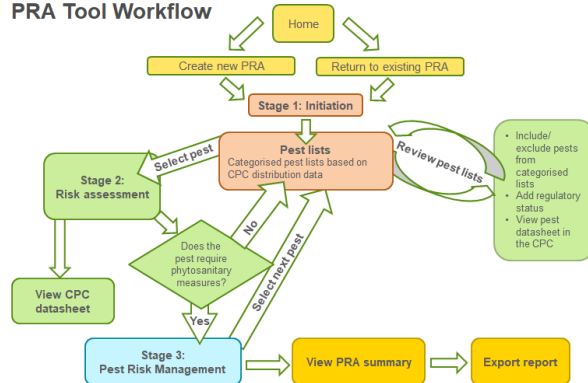
- Go to and complete risk assessments for each pest
- Exclude the pest from the assessment (moving it to the 'Pests excluded from the assessment' list)
- Add Regulatory status

Add notes

Link to CPC species datasheets

User actions	Type	Pest name	On crop	On commodity	Exporting Country	Importing Country	Number of countries where present	Regulatory status	Risk assessment	Notes	Modified by user
***	Arthropoda	Aphis fabae (black bean aphid)	Yes	Yes	Present	Absent	90	In progress			
***	Arthropoda	Bemisia tabaci (tobacco whitefly)	Yes	?	Present	Absent	173	Incomplete			
***	Ascomycota	Botrytis fuckeliana (grey mould-rot)	Yes	Yes	Present	Absent	59	Incomplete			

PRA Tool Workflow



CPC and PRA Tool gratis access to NPPOs

CABI's Action on Invasives programme will provide free access to both the **Crop Protection Compendium** and the **PRA Tool** to 92 low-income countries

Afghanistan	Cuba	Lesotho	Solomon Islands
Angola	Cyprus	Liberia	Somalia
Antigua & Barbuda	Djibouti	Madagascar	South Sudan
Armenia	DPR Korea	Malawi	Sri Lanka
Azerbaijan	DR Congo	Maldives	St Helena
Bahamas	Equatorial Guinea	Mali	St Kitts & Nevis
Bangladesh	Eritrea	Mauritania	St Lucia
Barbados	Ethiopia	Mauritius	St Vincent and the Grenadines
Belize	Gabon	Mongolia	Sudan
Benin	Gambia	Mozambique	Swaziland
Bhutan	Georgia	Myanmar	Syrian Arabic Republic
Botswana	Ghana	Namibia	Tajikistan
Brunei Darussalam	Grenada	Nepal	Tanzania
Burkina Faso	Guinea	Niger	Timor-Leste
Burundi	Guinea-Bissau	Nigeria	Togo
Cambodia	Guyana	Pakistan	Trinidad & Tobago
Cameroon	Haiti	Papua New Guinea	Turkmenistan
Cape Verde	Jamaica	Philippines	Uganda
Central African Republic	Kazakhstan	Rwanda	Uzbekistan
Chad	Kenya	Sao Tome and Principe	Vietnam
Comoros	Kosovo	Senegal	Yemen
Congo	Kyrgyzstan	Seychelles	Zambia
Cote D'Ivoire	Lao People's Democratic Republic	Sierra Leone	Zimbabwe

For more information contact PRA@cabi.org



Ministry of Foreign Affairs of the Netherlands



Horizon Scanning Tool

Prioritizing invasive species threats

www.cabi.org/horizonscanningtool

Targeted users: risk assessors, plant protection officers, quarantine officers, protected area managers and researchers

Refine by: ? Results: 2382 species found

Source countries: Show: 25 Page: 1 of 96 Download as CSV

Pathways	Preferred scientific name	International common name	Taxonomic group	View datasheet
Plant hosts	Abrus precatorius	rosary pea	Plants	CPC (Full) ISC (Full)
Plant parts in trade	Abutilon theophrasti	velvet leaf	Plants	CPC (Full) ISC (Full)
Habitats	Acacia confusa		Plants	ISC (Full) ? CPC (Full) ?
Taxonomic group	Acalolepta cervina	coffee longhorn	Invertebrates	CPC (Basic) ?
	Acanthophilus helianthi	fly, capsule	Invertebrates	CPC (Full)
	Acanthocoris scaber		Invertebrates	CPC (Basic) ?
	Acanthocoris scabrator	squash bug	Invertebrates	CPC (Full) ?
	Acanthocoris sordidus	winter cherry bug	Invertebrates	CPC (Basic) ?
	Acantholyda parki		Invertebrates	CPC (Basic) ?
	Acaphylla steinwardeni		Invertebrates	CPC (Basic) ?
	Acarus siro	flour mite	Invertebrates	CPC (Full) ?
	Arenaria raianni	nissenia mite	Invertebrates	CPC (Full)

Current search:

Other countries: Japan ✗ China ✗ Korea, DPR ✗ Korea, Republic of ✗ Malaysia ✗ Vietnam ✗ Laos ✗ Papua New Guinea ✗ Singapore ✗ Indonesia ✗

Pathways: Container or bulk ✗ Containers and packaging - non-wood ✗ Containers and packaging - wood ✗ Debris and waste associated with human activities ✗ Floating vegetation and debris ✗ Hitchhikers in or on plane ✗ Hitchhikers on land vehicles ✗ Hitchhikers on ship or boat ✗ Hitchhikers on land vehicles ✗ Machinery and equipment ✗ Mail ✗ Mulch, straw, baskets and sod ✗ People and their luggage/equipment ✗ Ship ballast water ✗ Ship ballast water and sediment ✗ Ship hull fouling ✗ Soil, sand, gravel ✗

Intrusive data sources with risk

Potential threats to a country or state can be filtered by:

- habitat
- pathway
- host plant (for CPC subscribers only)
- plant part in trade (for CPC subscribers only)
- taxonomic group
- Options are provided to select source countries by geography, climate similarity or trade links
- A CSV output includes fields to assist prioritization



Phase 1: beta version launched March 2018

Phase 2: full launch, November 2018



CABI is an international intergovernmental organisation, and we gratefully acknowledge the core financial support from our member countries (and lead agencies) including:



Ministry of Agriculture and
Rural Affairs,
People's Republic of China



Agriculture and
Agri-Food Canada



Ministry of Foreign Affairs of the
Netherlands



Schweizerische Eidgenossenschaft
Confédération suisse
Confederazione Svizzera
Confederaziun svizra

Swiss Agency for Development
and Cooperation SDC

UP NEXT:

→ **CBD**





Convention on
Biological Diversity

Capacity Development for Plant Health and Achieving 2020 Aichi Biodiversity Targets

Junko Shimura, UN Secretariat of the CBD



By 2020, invasive alien species and pathways are identified and prioritized, priority species are controlled or eradicated and measures are in place to manage pathways to prevent their introduction and establishment

----- *Aichi Biodiversity Target 9*



Convention on
Biological Diversity

What are the issues for capacity development?

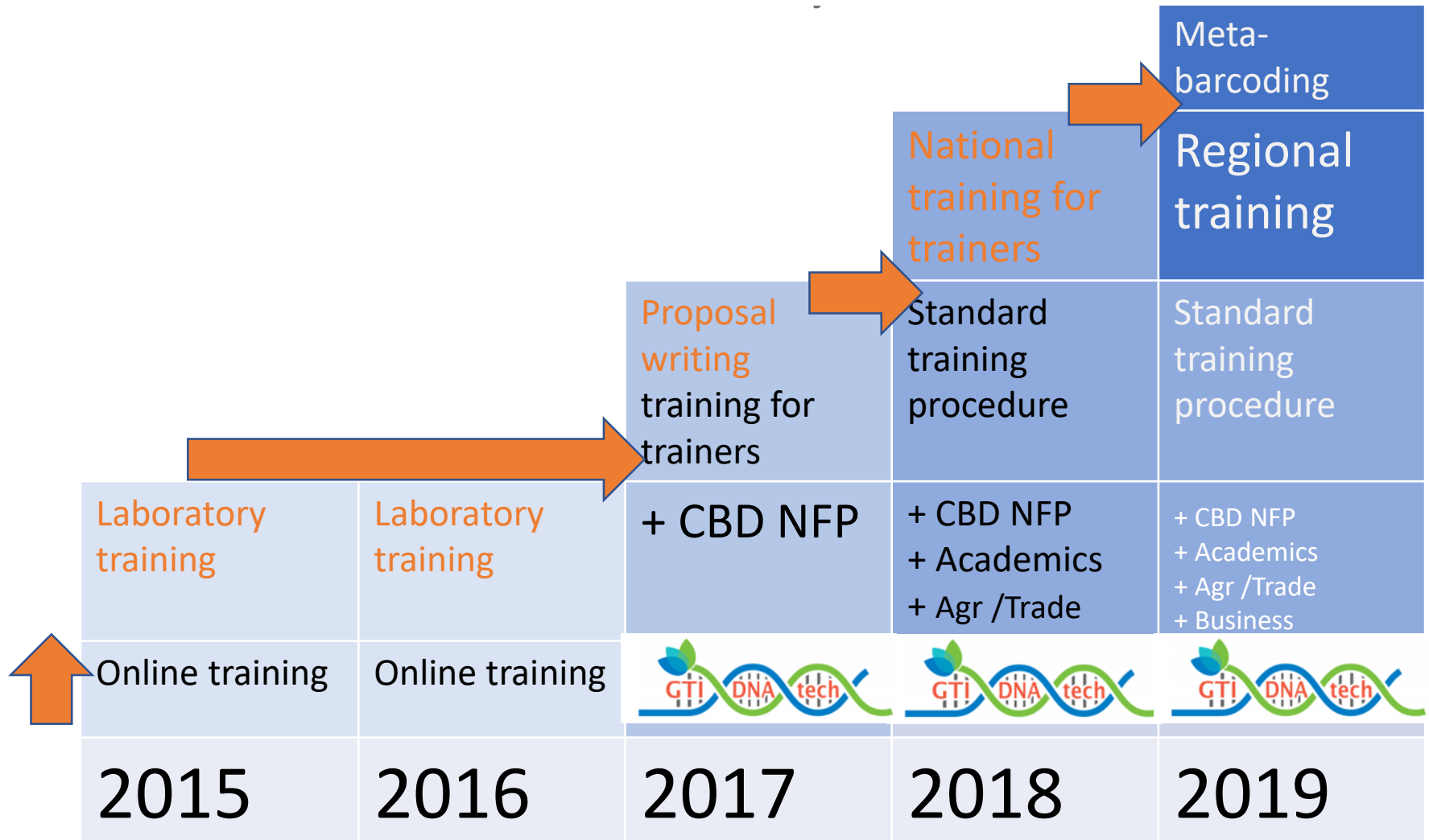


- IAS and pests
- Crops
- Forests
- Biodiversity
- Economics
- Trade
- Travel



Convention on
Biological Diversity

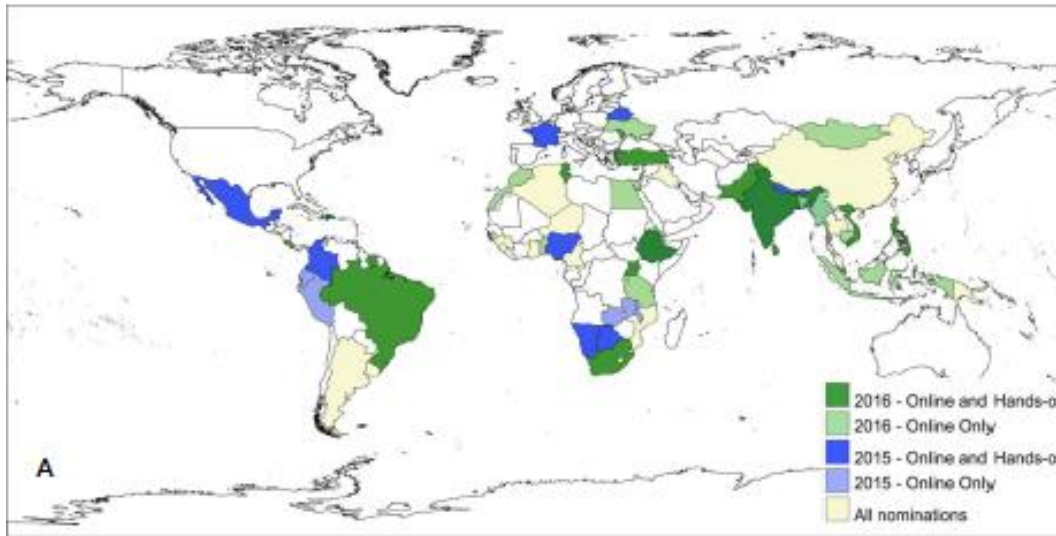
Global Taxonomy Initiative





Convention on
Biological Diversity

Online and lab training for trainers in 2015 -2016



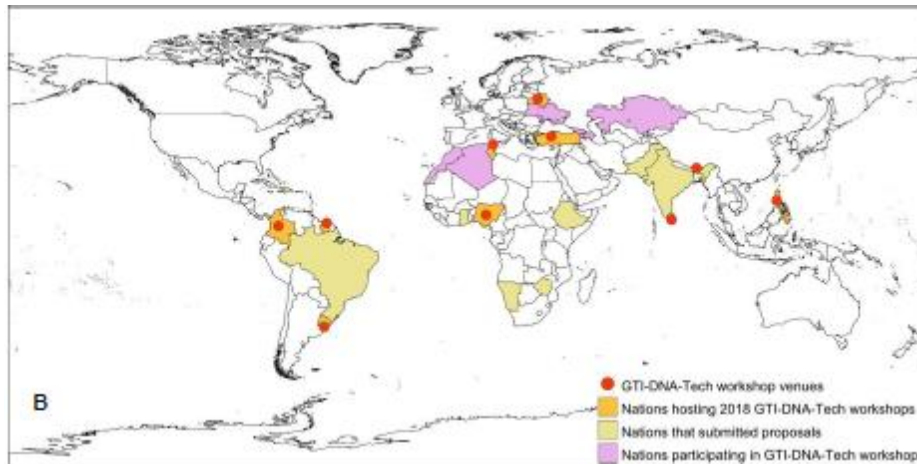
- 52 Trainees from 48 developing countries trained by online
- 29 trainees trained in lab who became Trained Trainers of GTI-DNA tech





Convention on
Biological Diversity

GTI-DNA-tech standard training for trainers organized by ToT in 2018



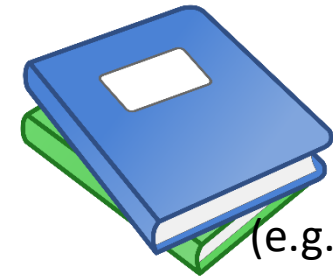
- 10 workshops implemented
- 165 new trainers trained
- 95 experts from 103 institutes/organisations Engaged
- 625 samples analyzed and
- 500 BOLD sequences to be added





Convention on
Biological Diversity

- **Develop sound policy and national commitment (e.g. NBSAPs)**
- **Maximize existing capacity**
- **Strengthen knowledge sharing and bioinformatics capacity development.**



(e.g. NBSAPs)





Convention on
Biological Diversity

Post-2020 Biodiversity Framework

- Stepping stone for 2050 vision of biodiversity *“Living in Harmony with Nature”*
- Process should be driven by Parties and participatory, inclusive, gender responsive, transformative, comprehensive, catalytic, visible, knowledge based, transparent, efficient, result-oriented, interactive and flexible
- Biodiversity commitments (Domestic and international)

Indicative chronology

- Feb- May 2019 :Regional consultations
- May - Aug 2019 : Discussion paper for review
- Aug/Sep 2019 : **Open-ended Working Group on Biodiversity Framework 1**
- Nov 2019 : **SBSTTA 23**
- Mar 2020 : Draft Framework
- May 2020 : **SBSTTA 24** and **SBI 3**
- July 2020 : **Open-ended WG2**
- Oct 2020 : **COP15 in China** for adoption of the post-2020 global biodiversity



Convention on
Biological Diversity

More information:

- <http://cbd.int/post2020>
- <http://cbd.int/invasive>
- <http://cbd.int/gti>
- <https://www.cbd.int/sp/targets/>

Special thanks to:

- University of Guelph, Canada
- International Barcode of Life Consortium
- Japan Biodiversity Fund
- Communication team at the Secretariat of the CBD
- Creative commons

UP NEXT:



IAEA / FAO Joint Division

The Joint FAO/IAEA Division of Nuclear Techniques in Food and Agriculture contributions to capacity development for plant health



**Rui Cardoso
Pereira**

Commission on Phytosanitary
Measures, Fourteenth Session,
1-5 April 2019. Rome, Italy



Food and Agriculture Organization of the United Nations

International Atomic Energy Agency



Technical Panels

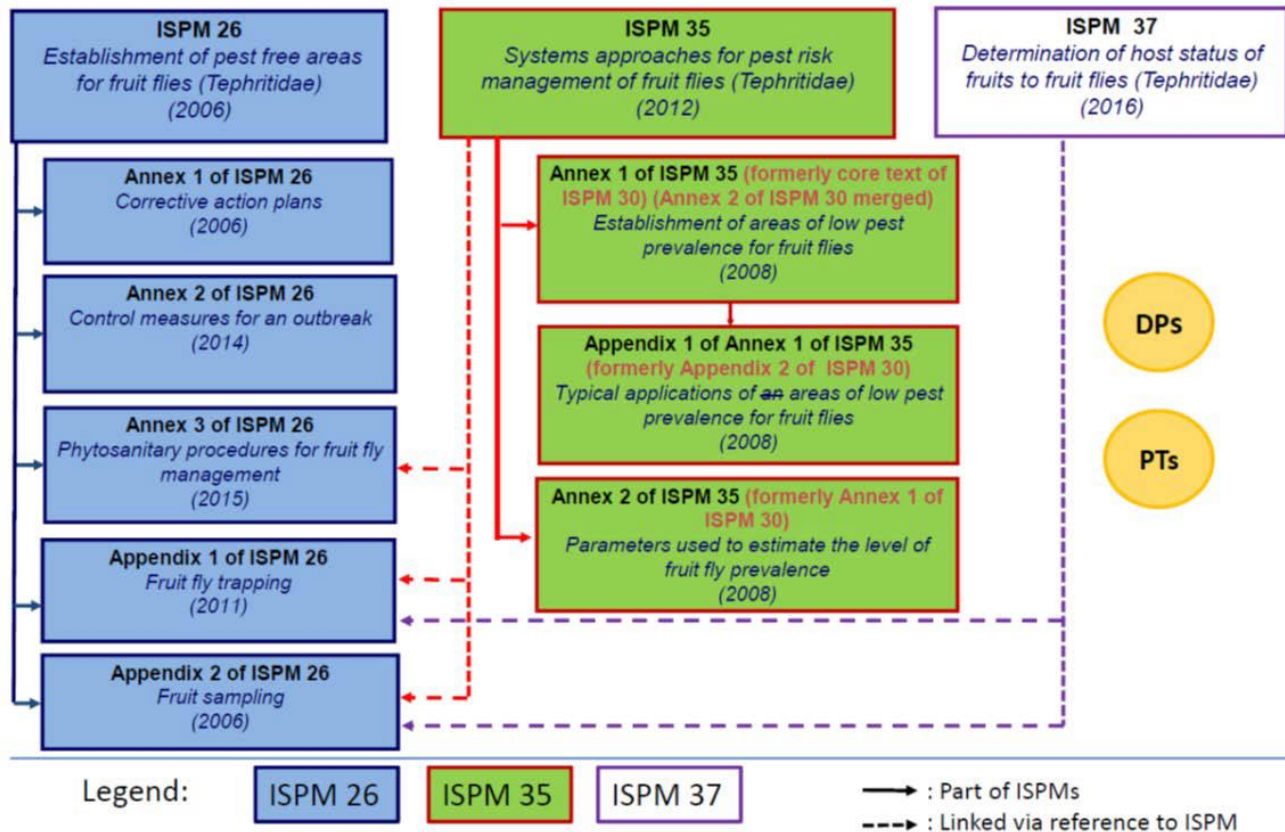
The Joint FAO/IAEA Division continues to support the:

- *Technical Panel on Pest Free Areas and Systems Approaches for Fruit Flies (TPFF)*
- *Technical Panel on Phytosanitary Treatments (TPPT).*



Fruit Fly ISPMs

Review of technical information related to the reorganization and harmonization of fruit fly standards (adopted by the CPM-13, 2018).

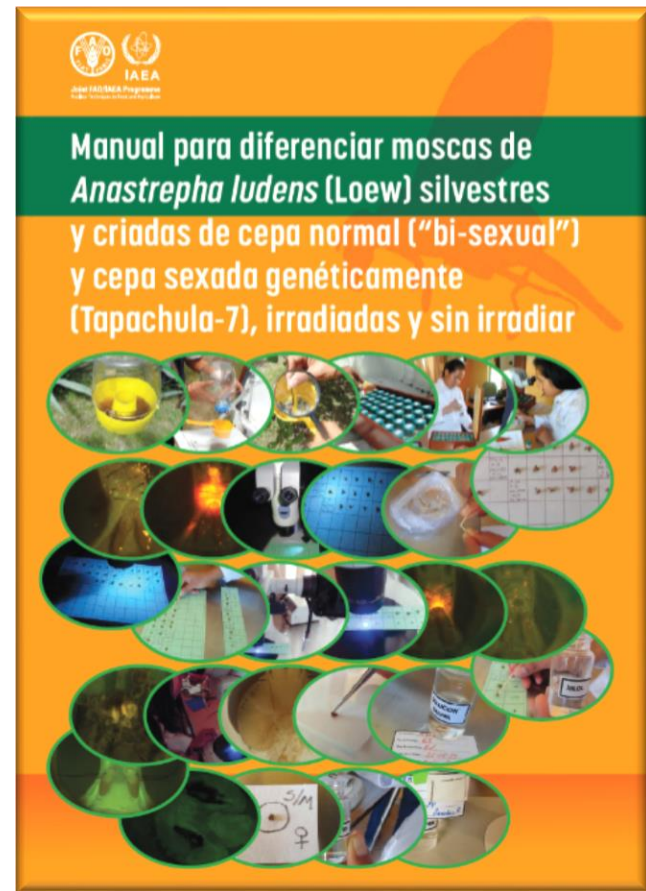
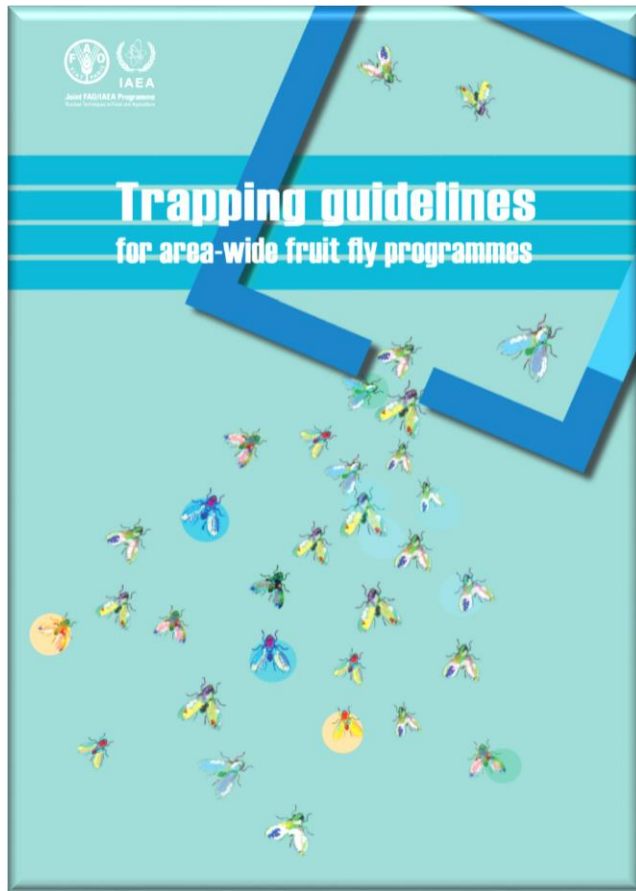


ISPMs

Facilitated the successful adoption of treatments as Annexes to ISPM 28, the last of which was the “Vapour heat treatment for *Bactrocera dorsalis* on *Carica papaya*” in 2018



Technical materials to support the implementation of the ISPMs



The International Database on Commodity Tolerance (IDCT)



<https://nucleus.iaea.org/sites/naipc/IDCT/Pages/default.aspx>



Food and Agriculture Organization of the United Nations

International Atomic Energy Agency



Capacity building on the implementation of the fruit fly ISPMs through regional workshops and technical meetings



Food and Agriculture Organization of the United Nations

International Atomic Energy Agency



UP NEXT:

→ **WBG**

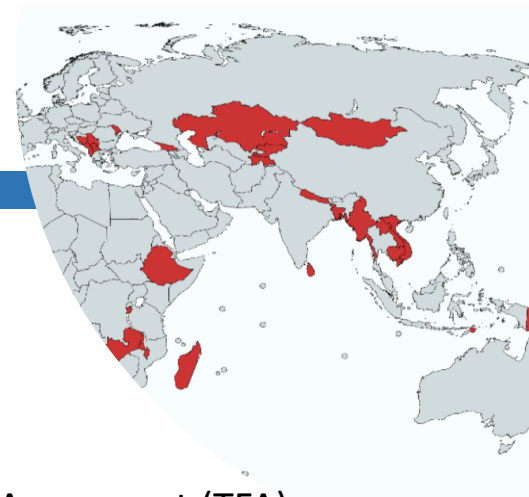


Supporting capacity development in plant health



Shane Sela
Senior Trade Facilitation
Specialist

Trade Facilitation Support Program



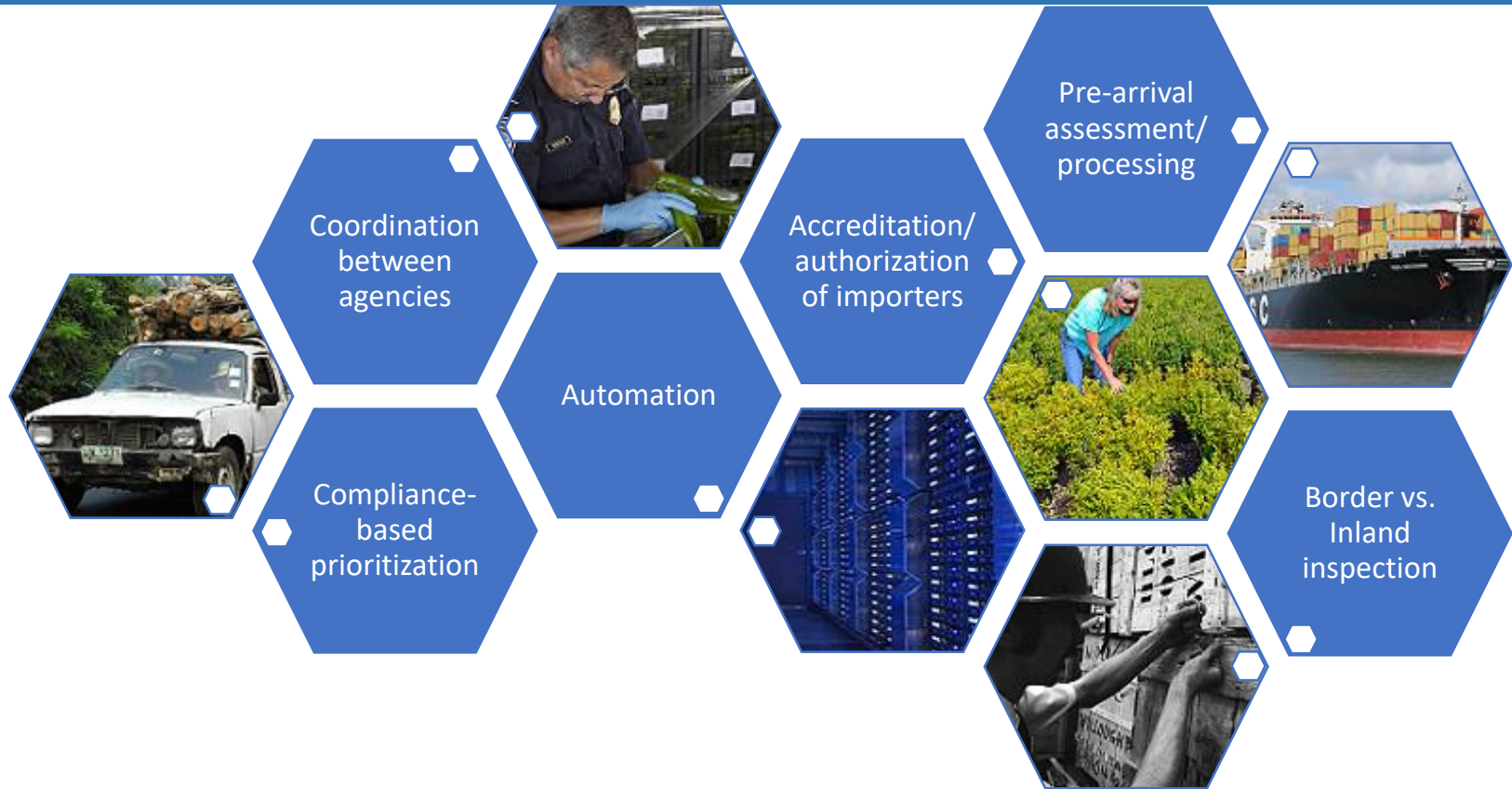
- 45 developing countries being supported
- \$45 million in commitments from donors
- Alignment of laws, procedures, processes, systems to Trade Facilitation Agreement (TFA)
- Facilitation of knowledge sharing, peer-to-peer learning, and the measurement of progress and results
- Practical/demand-driven assistance
- Focus on full and effective implementation of the TFA
- Important in the context of border cooperation, increasing risk-based procedures, etc.

Risk-based management

- Working to implement TFA reforms with SPS agencies
- Objectives
 - Increase risk-based border management and collaboration amongst agencies
 - Reduce documentary burdens
 - Support preparations for Single Window implementation



Risk-based management



Supporting automation

- IPPC ePhyto project
- Improvements to efficiency and security in exchange of phytosanitary certificates
- Opportunity to expedite government and trade processes
- WBG working with IPPC to assist developing countries in using ePhyto to improve trade
 - Advanced information – pre-arrival analysis, assessment of risk, implementation of coordinated risk-based approaches
 - Data availability and analysis – better identification understanding of risks
 - Alignment of ePhyto with national single windows
- WBG is also working with STDF, OIE and Codex to facilitate alignment between electronic documents



Understanding the impact of border procedures on perishables

- Survey of traders to understand the challenges in the movement of perishables
- Allow for more focused interventions to better address border management challenges
- Area of analysis
 - Where are the bottlenecks?
 - What are reasons?
 - What is the role of Customs, Plant Quarantine and others in contributing to impacts?
 - How can things be improved?
 - Are there estimates for the impacts?
- Currently working with



WBG Blog

- **Getting the balance right: minimizing food safety risks and facilitating trade in North Macedonia**

<https://blogs.worldbank.org/trade/getting-balance-right-minimizing-food-safety-risks-and-facilitating-trade-north-macedonia>

UP NEXT:



STDF



STDF work in support of plant health and safe trade

Melvin Spreij
CPM, Rome
3 April 2019



Food and Agriculture
Organization of the
United Nations



WORLD BANK GROUP



World Health
Organization



WORLD ORGANISATION FOR ANIMAL HEALTH
Protecting animals, preserving our future



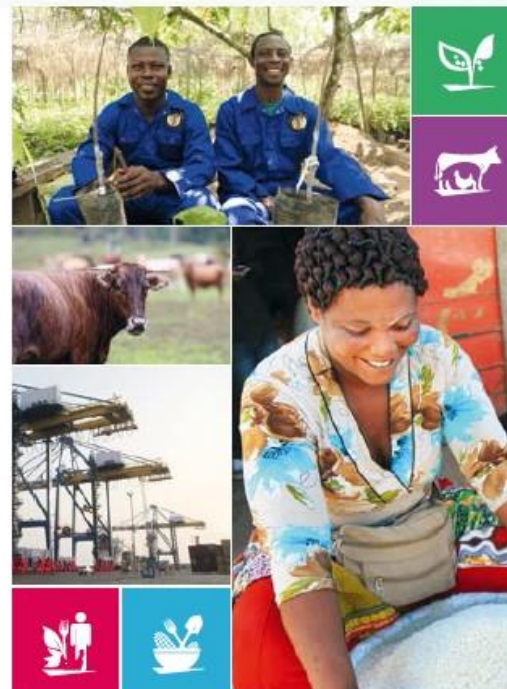
WORLD TRADE
ORGANIZATION

it
ntion

**Global coordination platform,
knowledge hub and network for
SPS capacity building**



**Funds for innovative, cross-
cutting SPS projects and
project development**



Driving good practice in SPS technical cooperation

- Reducing SPS trade costs, protecting health (in broader context of TFA)
- Public-private partnerships:
 - includes focus on use of third party assurance schemes in food control systems
- Prioritizing SPS investments for Market Access (P-IMA) – Tajikistan



Innovative/collaborative projects

- Collection & development of IPPC training manuals (PG/350)
- Training of 30+ PCE facilitators; 4 validated (PG/401)
- ePhyto (PG/501)
- Rolling out tools to support Systems Approach (ISPM 14) (PG/503)



Examples of other ongoing projects

- Promoting IT solutions for surveillance and pest reporting in **SE Asia** (PG/432)
- Strengthening phytosanitary capacity for plant exports in **Zambia** (PG/481)
- Building phytosanitary capacity to facilitate trade in **Guinea** (PG/498)
- Enhancing capacity of fruit and vegetable sector in **Uganda** (PG/543)



Steps to follow on STDF PPG or project funding

Browse webpages for eligibility criteria

www.standardsfacility.org/project-preparation-grants

www.standardsfacility.org/project-grants

View examples of previous projects

Read the guidance note for applicants

Consult stakeholders in the country/region

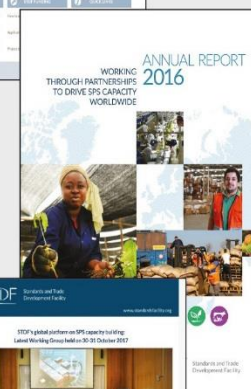
Send concept for feedback STDFSecretariat@wto.org

Submit application form online before **19 July 2019**



**FIND OUT MORE
ABOUT STDF'S WORK
AND GET INVOLVED**

Access SPS information and tools at
www.standardsfacility.org

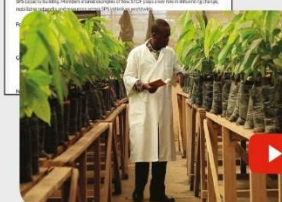


Browse SPS resources
in the **online Library**

Share experiences
and lessons at
STDF's Working Group



Sign up for updates through
STDF's e-news



View good practice films on
STDF's YouTube channel

 **YouTube**

The STDF is supported by



**MINISTRY OF
FOREIGN AFFAIRS
OF DENMARK**
Danida



Ministry for Foreign
Affairs of Finland



Federal Ministry
of Food
and Agriculture



Irish Aid
Rialtas na hÉireann
Government of Ireland



Kingdom of the Netherlands



Norwegian Ministry
of Foreign Affairs



Sweden
Sverige



UKaid
from the British people



**U.S. FOOD & DRUG
ADMINISTRATION**



UP NEXT:



WTO



Food and Agriculture Organization
of the United Nations



International Plant
Protection Convention



WTO SPS Technical Assistance



CPM 14, Rome, Italy - 3 April 2019

Anneke Hamilton

SPS Team

Agriculture and Commodities Division

World Trade Organization



WTO SPS Technical Assistance

- Specific SPS-related technical assistance activities on the SPS Agreement are organized and delivered each year.
- To enhance the knowledge and expertise of government officials from Members and Observers in understanding and implementing the SPS Agreement.
- Plant health is one of the components covered in these activities. IPPC participates in various of these WTO SPS technical assistance activities.



WTO SPS Technical Assistance: Activities

- **National Seminars**

- Focus on specific challenges related to the implementation of the SPS Agreement

- **Regional SPS Workshops**

- Address specific SPS-related training needs identified within regions, in collaboration with regional organizations

- **Thematic SPS Workshops**

- Build on topic-specific discussions within the SPS Committee
- Transparency and Coordination: 15-16 July 2019 (Geneva, Switzerland)



WTO SPS Technical Assistance: Activities

- **Advanced SPS Course**
 - 3 week in-depth and hands-on training activity on the SPS Agreement focused on the active leadership of participants in SPS-related matters
 - 2019 Advanced SPS Course (English): 28 October to 15 November 2019 (Geneva, Switzerland)

- **Other activities as requested by international/regional organizations**
 - 2018 Border Agency Cooperation workshop held in Cape Town, South Africa (*funded by the Trade Facilitation Agreement Facility and World Bank*)

- **SPS e-Learning Course**
 - Available all year long: <https://wtolearning.csod.com>



WTO SPS Technical Assistance: Application Process

Complete information on eligibility criteria, deadlines, funding, pre-requisites, and application processes and form are available from:

- [G/SPS/GEN/997/Rev.9](#) ;
- the SPS Technical Assistance gateway at:
<http://www.wto.org/sps/ta>; and
- the SPS Technical Assistance flier.



WTO SPS TECHNICAL ASSISTANCE ACTIVITIES IN 2019

The WTO Secretariat plans to organize a number of specific technical assistance activities on the Agreement on the Application of Sanitary and Phytosanitary Measures (SPS Agreement) in 2019:

- **E-Learning Course on the SPS Agreement** (<https://wtolearning.coop.com>)
 - E-Learning course in English, French and Spanish available throughout the year
- **National SPS Seminars**
 - Upon request by any WTO Member or Observer. The online application form to request a WTO National SPS Seminar is available at: https://wto.formstack.com/forms/national_ta_requests
- **Thematic SPS Workshop on Transparency and Coordination** (in English, French and Spanish)
 - In Geneva, Switzerland: 15 to 16 July 2019
 - Open to all WTO Members and observers: Least-developed and developing countries may apply for funding
 - Pre-requisite: only for government officials holding direct responsibilities in the SPS area, particularly in the implementation of the transparency provisions of the SPS Agreement or in coordination among SPS agencies at the national level, including SPS national enquiry points or national notification authorities
 - Deadline for application for funding: **5 April 2019**
- **2019 Advanced Course on the SPS Agreement** (in English)
 - In Geneva, Switzerland: 28 October to 15 November 2019
 - Eligible WTO Members and observers: Least-developed and developing countries
 - Pre-requisite: successful completion of the WTO E-Learning Course on the SPS Agreement
 - Deadline for application for funding: **3 June 2019**
- **Regional SPS Workshop for Central and Eastern Europe, Central Asia and the Caucasus** (in English)
 - In Vienna, Austria (Joint Vienna Institute): Week of 18 September 2019
 - Eligible WTO Members and observers: Afghanistan; Albania; Armenia; Azerbaijan; Belarus; Bosnia and Herzegovina; Georgia; Iran; Israel; Kazakhstan; Kyrgyz Republic; Moldova, Republic of; Montenegro; North Macedonia; Russian Federation; Serbia; Tajikistan; Turkey; Ukraine; Uzbekistan
 - Pre-requisite: preference will be given to candidates that have successfully completed the WTO E-Learning Course on the SPS Agreement by the time of their application
 - Deadline for application for funding: **3 June 2019**

For complete information on eligibility criteria, deadlines, funding, pre-requisites, and application processes please consult document [G/SPS/GEN/997/Rev.9](#), and the SPS Technical Assistance gateway at: <http://www.wto.org/sps/ta>

The online application form for SPS Technical Assistance activities is available at: <https://worldtradeorganization.wufoo.eu/forms/2019-wto-sps-technical-assistance-application-form>

6 March 2019



SPS Committee: Thematic Sessions and Fifth Review

- Knowledge dissemination and experience sharing are also fostered through **SPS Committee Thematic Sessions** on various topics such as:
 - Equivalence (October 2018 and March 2019);
 - Regionalization (July 2018 and July 2019);
 - Fall Armyworm (March 2019); and
 - Approval Procedures (November 2019).
- Participation of Members and various organizations, including 3 Sisters, in these thematic sessions.





Thank you!

Anneke Hamilton

anneke.hamilton@wto.org

SPS gateway

http://www.wto.org/english/tratop_e/sps/_e.htm



WTO OMC

Questions and answers



Contacts

IPPC Secretariat
Food and Agriculture Organization of the United Nations
Viale delle Terme di Caracalla, 00153 Rome, Italy
Tel.: +39-0657054812
Email: IPPC@fao.org

Websites:
www.fao.org
www.ippc.int

