



Food and Agriculture  
Organization of the  
United Nations



International  
Plant Protection  
Convention



# IPPC Secretariat Updates of IPPC Subsidiary Bodies (study on e-commerce)



## IPPC Observatory study on e-commerce

### Outline: IPPC Observatory e-commerce study

1

Context for the study.

2

Objective of the study.

3

Survey Overview.

4

Completing the survey.

5

Post data collection (what to expect).

6

Question and answer.



## IPPC Observatory study on e-commerce

### 1. Context for the IPPC Observatory E-commerce Study



IPPC infographic video

IPPC E-commerce guide

IPPC E-commerce web portal

CPM Recommendation on e-commerce trade



## IPPC Observatory study on e-commerce





## IPPC Observatory study on e-commerce

### 2. Objective of the E-commerce Study



**Establish a baseline** for measuring key e-commerce indicators.

**Understand the extent** to which the CPM's recommendations on Internet trade in plants and other regulated articles have been implemented.

**Characterize the challenges and gaps** in managing the phytosanitary risks associated with e-commerce trade.

**Guide** further work on e-commerce and plant protection.



## IPPC Observatory study on e-commerce

### 2. Objective of the E-commerce Study

#### Use of the study outputs

Every data point  
obtained in this study  
is valuable

Your inputs will help the IPPC Secretariat and all of us understand the challenges and successes in addressing the phytosanitary risks associated with e-commerce and the postal and courier pathways.

Insights will guide the IPPC Secretariat in future capacity development focused on e-commerce to address the needs of contracting parties and help overcome challenges.

Additionally, the results may inform enhanced policymaking at a national level and provide valuable insights to other nations.





## IPPC Observatory study on e-commerce

### 3. Survey overview

#### IPPC Observatory E-commerce Study

Dear Survey Participant,

On behalf of the International Plant Protection Convention (IPPC) Observatory, I am extending an invitation to you to participate in our e-commerce survey, which is conducted under the IPPC Observatory E-commerce study. E-commerce, or online trading of goods, has significantly increased over the past decade, presenting escalating challenges to phytosanitary systems globally. In 2022, an astounding 161 billion parcels were shipped, with an estimated 256 billion parcels projected for 2027. Some of these packages contain plants, plant products, and regulated articles, creating a significant pathway for pest introduction and spread.

To support national plant protection organizations (NPPOs) in addressing these challenges, the Commission on Phytosanitary Measures (CPM) published a recommendation on *Internet trade (e-commerce) in plants and other regulated articles* in 2017. Managing the pest risk associated with goods purchased online and distributed via postal and courier pathways is also highlighted as a priority within the IPPC Strategic Framework 2020-2030. Additionally, in 2023, an *IPPC E-commerce Guide on managing the pest risk posed by goods ordered online and distributed through postal and courier packages* was published.

This IPPC Observatory E-commerce study aims to understand the extent to which the CPM recommendations have been implemented by IPPC Contracting Parties and will provide baseline data which will be used to monitor the global evolution of phytosanitary e-commerce strategies. The study is expected to highlight both challenges and successes in managing the pest risks associated with e-commerce at a national level. The results of the study will also be critical in informing the IPPC workplan by identifying key capacity development needs of NPPOs.

This survey collects information related to: (i) national regulatory and non-regulatory frameworks; (ii) the implementation of phytosanitary measures, and (iii) monitoring of e-commerce. The results will be analysed, and a report will be published summarizing the main findings and providing recommendations for the consideration of CPM about how best to support NPPOs at both national and global levels.

**Your willingness to share your expertise and knowledge are vital to the success of this study.** Every response you provide is valuable, and there are no wrong answers. Your input will help us understand the implementation of CPM recommendations related to e-commerce. This understanding will guide the IPPC Secretariat in creating future capacity development materials on e-commerce that address the needs of contracting parties and support them in overcoming challenges. Additionally, the results of this study may inform enhanced policymaking in your country and may provide valuable insights to other nations.

When responding to the survey, please note the following:

- Before completing the survey, please read the survey instructions at the start of each section and associated with each question.
- The answers provided should be accurate as of December 31, 2023.
- Please provide us with your full contact information and, if deemed appropriate, of contributors to the survey, so we can send you a certificate of participation and the link to the report when available.
- All your responses are held in strict confidentiality. The final report is based on the aggregation and analysis of all survey responses, no country names will be identified.
- We would like to acknowledge you and other contributors to this survey at the end of the report. Kindly specify if you would like your NPPO and country name to be listed by checking the appropriate box at the end of the survey.

Please complete and submit the survey no later than **31 October 2024**. If you have any questions or require assistance with the survey, please do not hesitate to contact the IPPC Secretariat ([ippc@fao.org](mailto:ippc@fao.org)), keeping [Barbara.Peterson@fao.org](mailto:Barbara.Peterson@fao.org) and [Rubika.Madameirova@fao.org](mailto:Rubika.Madameirova@fao.org) in copy.

The team is also happy to schedule a phone call to walk you through it. A dedicated session will be organized to present and review the survey during 2024 IPPC Regional Workshops.

I thank you again for your invaluable contribution to this study.

Sincerely,

Ousama El-Lissy, IPPC Secretary

**The survey is available in Arabic, Chinese, English, French, Russian and Spanish. Deadline: 31 October 2024.**

**Support is available:** Please do not hesitate to contact us at [ippc@fao.org](mailto:ippc@fao.org). We are also happy to schedule a meeting to guide you through the survey.

**Completing the survey will likely require you to contact others within your NPPO and perhaps even outside your NPPO, so please start early.**

**Downloadable survey file:** a Word version is provided to facilitate collaboration.



## IPPC Observatory study on e-commerce

### 3. Survey overview

**The survey is structured to collect information on three primary areas:**

- ▶ National regulatory and non-regulatory phytosanitary frameworks relevant to e-commerce.
- ▶ Implementation of phytosanitary measures.
- ▶ Monitoring of e-commerce pathways.

**The survey also collects basic demographic information and provides an opportunity for the respondent to offer comments or recommendations.**





## IPPC Observatory study on e-commerce

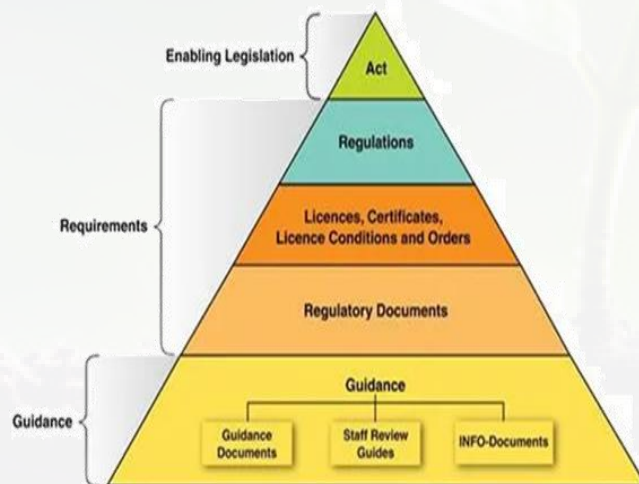
### I. Regulatory and non-regulatory frameworks

#### Elements of the Regulatory Framework

#### Non-regulatory frameworks

#### Coverage

Elements of the Regulatory Framework



Official frameworks not legally binding. This could include documents such as manuals, guides, procedures, MOUs.

Imports and exports.

Authority given to the NPPO.

Requirements of customs, postal services and courier services.  
Identification of e-commerce operators.

Repercussions for non-compliance.



## IPPC Observatory study on e-commerce

### II. Implementation of phytosanitary measures



List of prohibited and  
regulated articles.



Pre-border arrival risk  
management.



At border risk  
management.



Awareness raising on  
importance of  
phytosanitary efforts.



## IPPC Observatory study on e-commerce

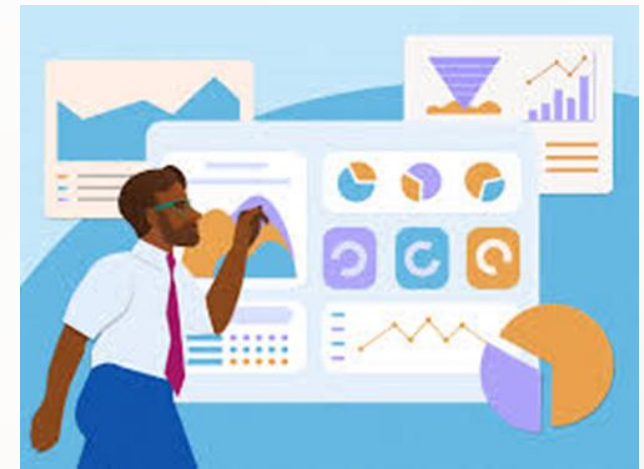
### III. Monitoring of e-commerce



**Existence of reporting systems**



**Risk profiling**



**Data analysis**



## IPPC Observatory study on e-commerce

### 4. Completing the survey

**Instructions:** Provided at the start of each section and with each question.

**The survey has the four types of questions:**

- ✓ Yes / No questions
- ✓ Multiple choice questions
- ✓ Opinion questions
- ✓ Open-ended questions

***Answers provided in the survey should be accurate as of 31 December 2023***

**Glossary:** Definitions and examples for key terms used in the survey are provided.



## IPPC Observatory study on e-commerce

### 4. Completing the survey

**Confidentiality of collected information:** All the responses are held in strict confidentiality. The final report is based on the aggregation and analysis of all survey responses; no country names will be identified.

**Support provided to you:**

- ✓ Send email to [ippc@fao.org](mailto:ippc@fao.org) if you have any questions or concerns.
- ✓ IPPC Secretariat is happy to schedule a call to guide you through the survey, if requested.

**Acknowledgement:** Please provide us with your complete contact information at the end of the survey so we can send a certificate of participation and the link to the report.

**Deadline for responding to survey:** 31 October 2024



## IPPC Observatory study on e-commerce

### 5. Post data collection: What to expect

- 1 You will be sent a certificate of participation to acknowledge your contribution to his important work.
- 2 The IPPC Secretariat will review the responses and may contact you if any clarification is needed.
- 3 Data will be analysed and finalised for all countries.
- 4 Preliminary results will be presented to CPM-19 (2025).
- 5 The study report will be finalized and published.
- 6 A copy of the report will be sent to all survey respondents.
- 7 The report and recommendations will be presented to CPM-20 (2026).





## IPPC Observatory study on e-commerce

### Question and Answer

Let's Discuss





Food and Agriculture  
Organization of the  
United Nations



International  
Plant Protection  
Convention

# Thank you

## IPPC Secretariat

Food and Agriculture Organization  
of the United Nations (FAO)

[ippc@fao.org](mailto:ippc@fao.org) | [www.ippc.int](http://www.ippc.int)

