

19th Session of the Commission on Phytosanitary Measures

#Planthealth for food security, environmental protection
and safe trade

CPM
19

“One Health in the context of the Kunming Montreal Global
Biodiversity Framework”

Marianela Araya

Program Officer- Biodiversity and Health, CBD

The Kunming Montreal Global Biodiversity Framework

- Responds to evidence that **biodiversity is deteriorating** at rates unprecedented in human history and recognizes that **biodiversity is fundamental to human well-being, a healthy planet, and economic prosperity**.
- Aims to halt and reverse biodiversity loss, and to ensure that, by 2050, the shared vision of living in harmony with nature is fulfilled.
- Recognizes the importance of the interlinkages between biodiversity and health, as well as the importance of the One Health approach.

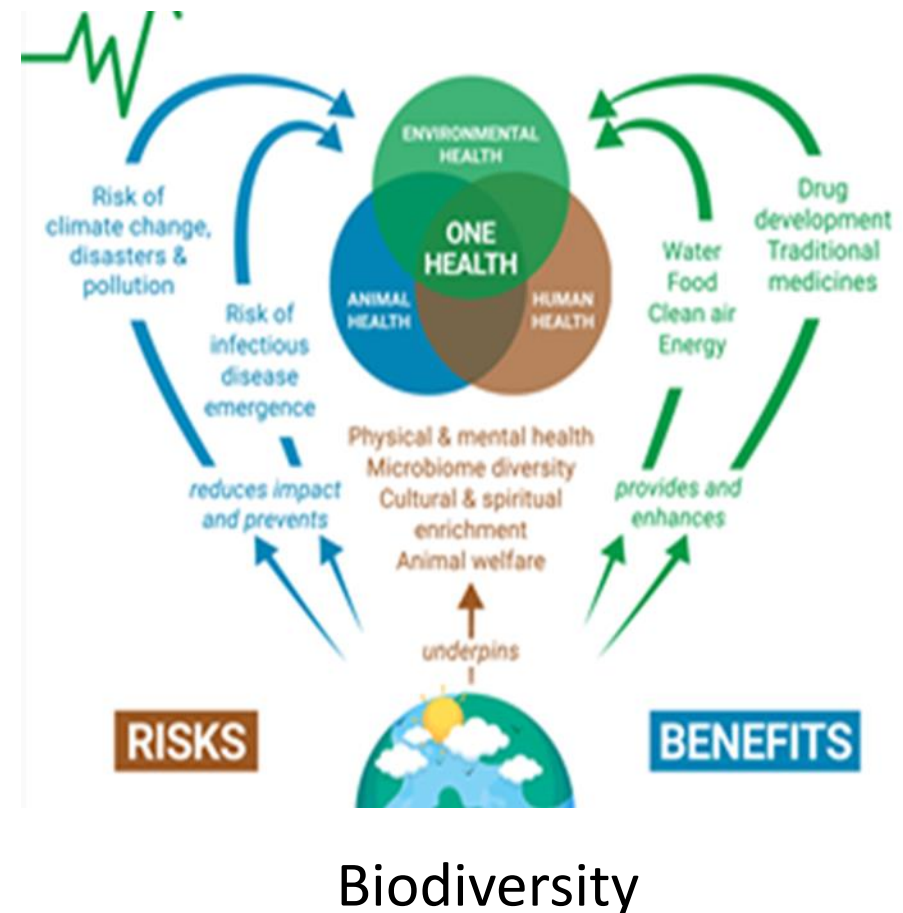


Kunming - Montreal
GLOBAL BIODIVERSITY FRAMEWORK

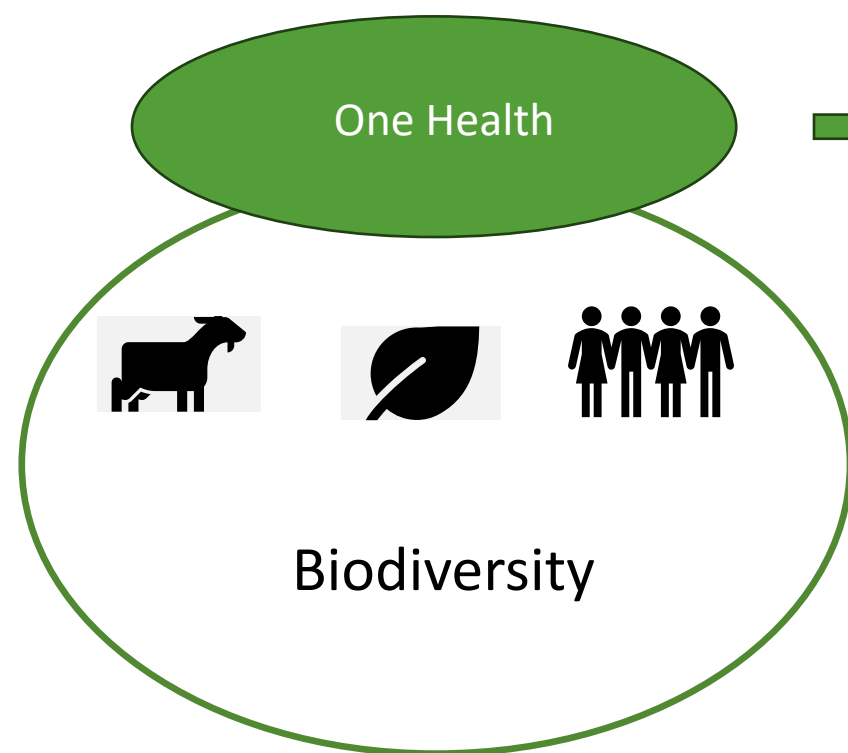
One Health in the KMGBF

The Framework is to be implemented with consideration of the **One Health approach**, among other holistic approaches that are :

- based on science,
- mobilize multiple sectors, disciplines and communities to work together,
- aim to sustainably balance and optimize the health of **people, animals, plants and ecosystems**,



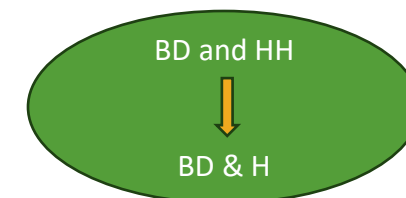
How does the work under the CBD recognizes the importance of plant health?



recognizes that the health of humans, animals, plants, and the wider environment are closely linked and interdependent.

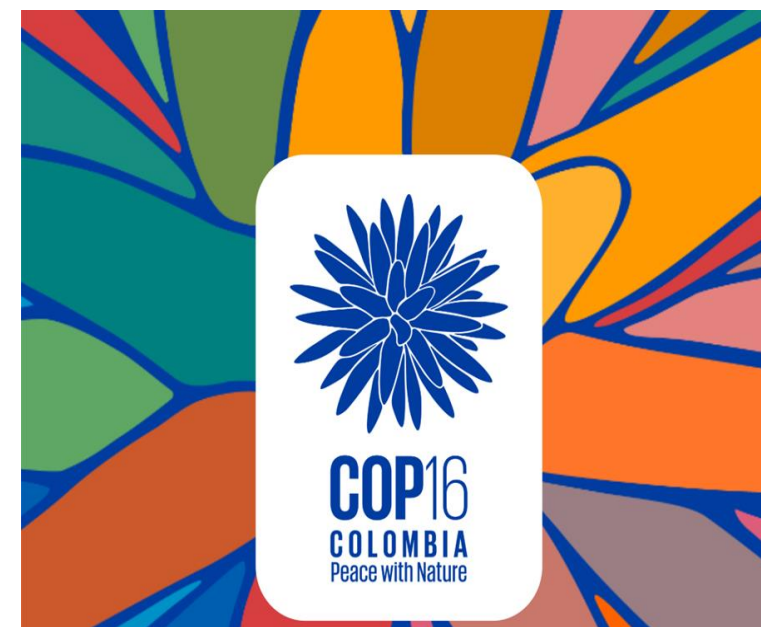
-KMGBF
-Global Action Plan

At CBD...



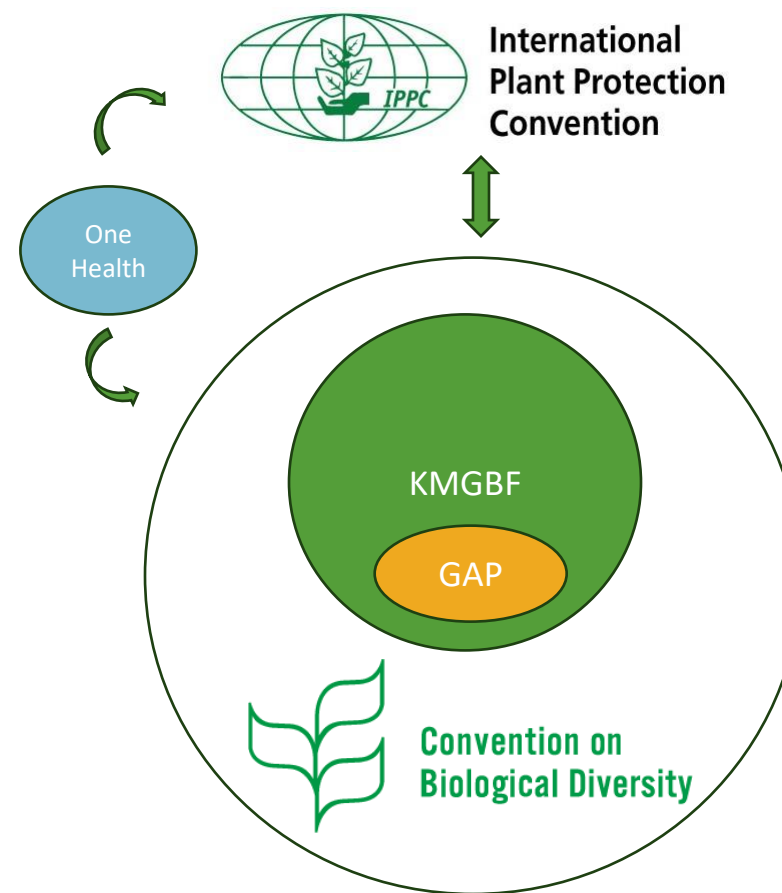
The Global Action Plan on Biodiversity and Health

- Recognizes:
 - the importance of biodiversity and health linkages
 - the cross-cutting nature of these linkages
 - the need for collaboration across sectors
- Proposes:
 - voluntary actions to mainstream BD&H linkages across several action areas (species management, agriculture, land-and-sea use-planning, urban areas, IAS, etc)
 - opens opportunities for cross-sectoral collaboration
 - its implementation will generate co-benefits for BD&H
 - can be used by Parties and stakeholders alike.



Linkages between CBD's and IPPCs work related to plan health

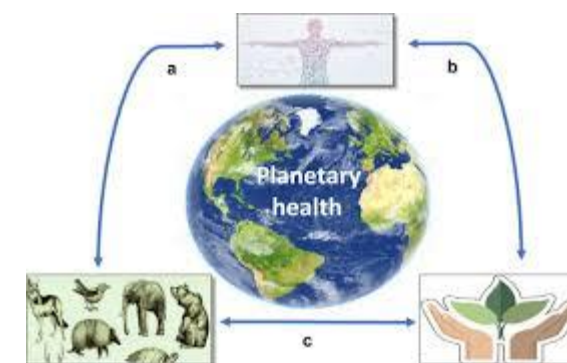
- CBD's KMGBF and GAP promote the importance of **all biodiversity elements** to generate health co-benefits
- IPPC's work to protect the world's cultivated and natural plant resources from plant pests, supports the objectives of the GAP and the broader KMGBF
- CBD's work on BD&H complements the efforts of IPPC in safeguarding plant health
- NATURE'S health is a cross-cutting area that requires efforts from several organizations and initiatives.



- coordinate efforts, support each other, share knowledge and experiences



Source: New food magazine





CPM
19

Thank you