



Food and Agriculture
Organization of the
United Nations



International
Plant Protection
Convention

IPPC support to strengthen phytosanitary capacity

Africa Phytosanitary Programme



Descartes Koumba

(APP) Phase 2 · Train-the-Trainer workshop
23–27 June 2025 · Mpumalanga, South Africa

Co-organized by:



agriculture
Department:
Agriculture
REPUBLIC OF SOUTH AFRICA



Funded by:



Funded by the
European Union



UK International
Development

Partnership | Progress | Prosperity

IPPC Secretariat: Supporting Global Implementation

The IPPC Secretariat facilitates the implementation of the convention and the application of harmonized standards. It supports contracting parties in developing and strengthening their phytosanitary systems and technical capacity through various initiatives:

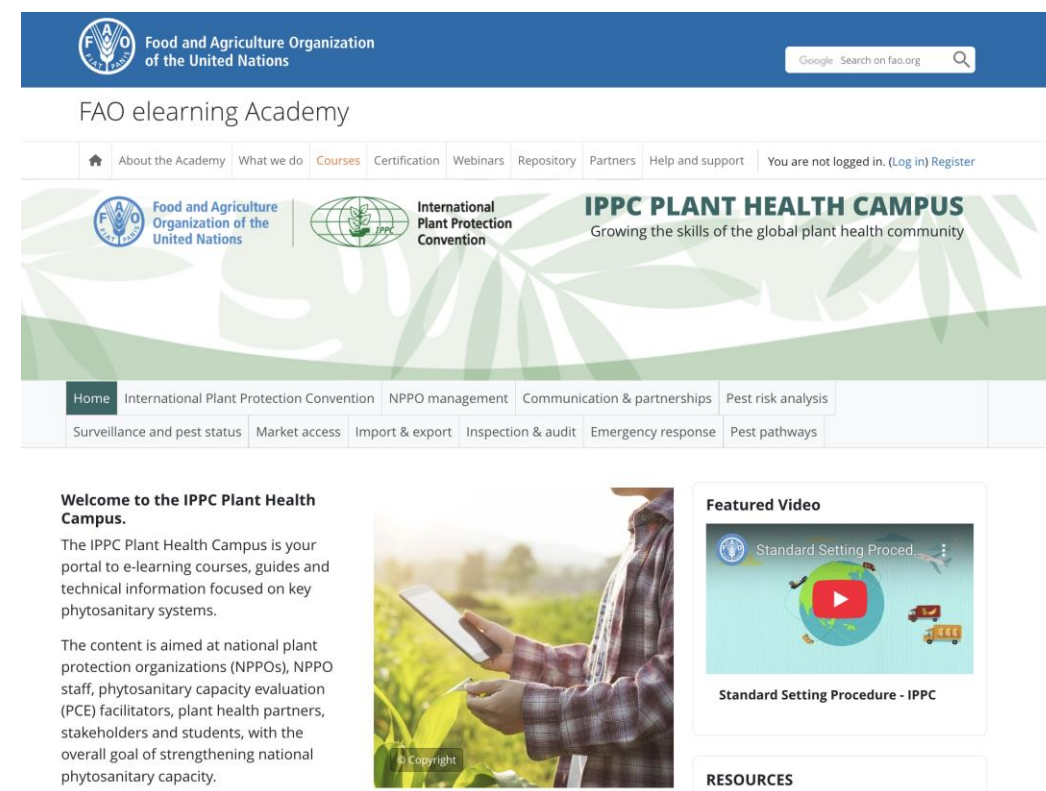
- Developing plant health standards through **collaborative structures**
- Creating **e-learning courses and producing guides and training manuals**
- Promoting knowledge **exchange and information sharing**
- Providing forums for discussion and **coordinated action**



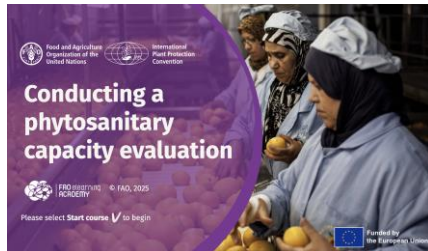
IPPC Plant Health Campus

Online learning platform plant health capacity development

- Convenient one-stop platform
- Multi-lingual
- Free, certified e-learning courses, IPPC guides and tools
- Developed by global plant health experts
- Downloadable materials, available anytime, anywhere
- Ensures inclusiveness, leaving no-one behind



A growing library of learning: a rich selection of e-learning courses



And more being published...

Africa Phytosanitary Programme · 23–27 June 2025

Designed to Support Both Self-Paced Learning and Structured Training Programmes

- **For plant health professionals:**
Complete courses anytime, anywhere — at your own pace
- **For national plant protection organizations (NPPOs):**
Easily integrate certified courses into staff training and capacity development programmes
- **For universities and academic institutions:**
Incorporate high-quality IPPC content into plant health and phytosanitary curricula



What is the Phytosanitary Capacity Evaluation?

The **PCE** is a **fully comprehensive NPPO-led, facilitator-enabled**, IPPC Secretariat-supported process of multiple phases, with a wide range of benefits, to help countries evaluate their phytosanitary capacities



Coordination

NPPO designates a PCE National Coordinator



Stakeholders

Actively participate and contribute to the PCE and improvement of a country's phytosanitary capacities



Consensus

PCE consists of three consensus workshops



Facilitation

IPPC identifies a list of facilitators
NPPO selects a PCE Facilitator
Int. and nat. legal consultants

PCE Overview

System (3)

- Country Profile
- Legislation
- Environmental forces

Organizational (3)

- NPPO's mission and strategy
- NPPO's structure and processes
- NPPO's resources

Core activities (7)

- Pest Diagnostic capabilities
- Surveillance and pest reporting
- Pest eradication
- Import regulation
- Pest risk analysis
- Pest-free areas
- Export certification & transit

Tailored and modular gap identification assessment:

1. Three levels of assessment
2. Each module contains a set of questions
3. Allows to identify gaps and their prioritization
4. Up to five gaps are prioritized per module
5. Countries can select the number of modules that suit their necessities and context
6. A full assessment is also possible
7. Arranged into an online system:



Modularity



Secure store



Confidentiality

PCE Implemntation



Framework for Evaluation



Situation analysis

- Identification of stakeholders
- Consultations for completion of PCE modules selected by the country
- Identify up to five weaknesses per module

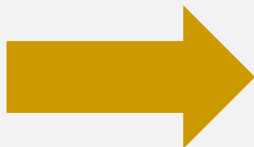
Strategic planning

- Conduct problem analysis ([compass](#))
- Conduct a SWOT analysis ([equips to navigate the landscape](#))
- Apply Logical Framework methodology ([Roadmap](#))
- Prepare the first draft of the national strategic plan

Validation

- Consultations with stakeholders on draft strategic plan
- National validation workshop with stakeholders
- Identify priorities in the strategy

PCE OUTCOMES



Phytosanitary Capacity
Development Strategy


New/revised
legislation/regulation

What is an ePhyto?

- **ePhyto** = electronic phytosanitary certificate
- ISPM 12 (1.2):
 - Phytosanitary certificates can be in paper form, or where it is accepted by the NPPO of the importing country, in electronic form.
 - Electronic phytosanitary certificates are the electronic equivalent of the wording and data of phytosanitary certificates in paper form ...
- Not a scanned certificate



ePhyto website

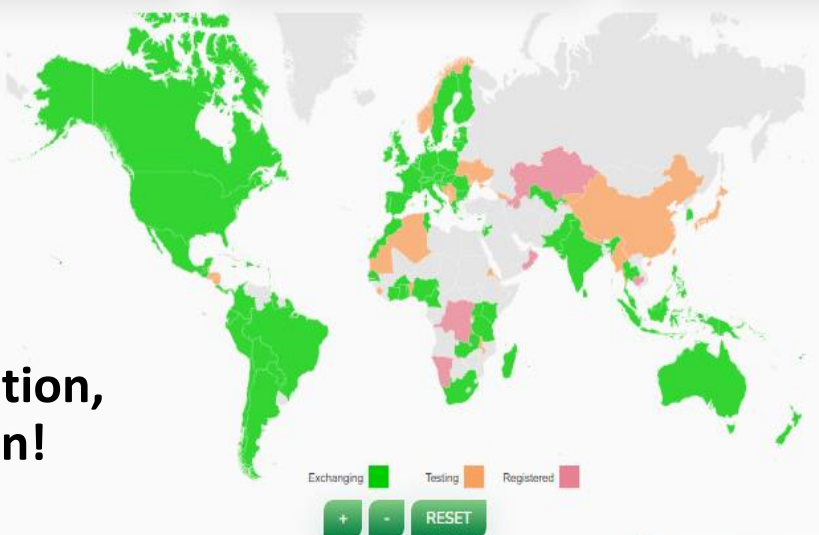
IPPC ePhyto SolutionCase Stories

[HOME](#)[HUB](#)[GeNS](#)[HARMONIZATION](#)[CONTACT](#)

Select the status
All

HUB Connections
133

GeNS Systems
53



www.ephytoexchange.org


How to join, technical documentation, case studies and other information!

CONTACT:
IPPC Secretariat: ippc@fao.org
ePhyto: ippc-ephyto@fao.org

GET IN TOUCH

HOW DOES ePhyto HELP YOU?

ePhyto is short for "electronic phytosanitary certificate". The IPPC ePhyto Solution is a tool that transition paper phytosanitary certificate information into a digital phytosanitary certificate or "ePhyto". This electronic exchange between countries makes trade safer, faster and cheaper.



133 countries on board

Exchanging: 90 (29 GeNS)

Testing: 34 (19 GeNS)

Registered: 9 (5 GeNS)

TOTAL: 133 (53 GeNS)

Responsibilities of IPPC Contact Points



Ensure Timely Information Exchange

Facilitate communication between parties with proper authority.



Direct Communications Appropriately

Forward information and requests to relevant officials.



Monitor Response Management

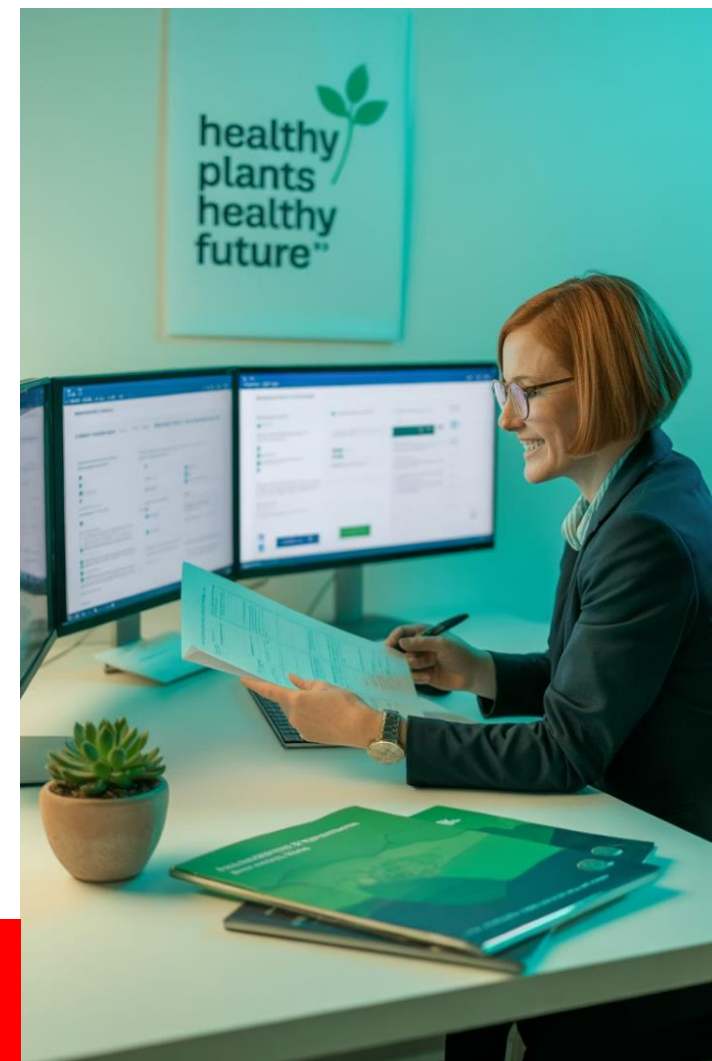
Track and ensure proper responses to inquiries.



Maintain Updated Information on the IPP

Keep contact details current on the International Phytosanitary Portal.

Please ensure that contact details of your IPPC Official Contact Point on the IPP.



7 Public NROs



1. Official Contact Point

This person handles all official IPPC communications. Must be updated within 30 days of any change and checked yearly.



2. NPPO Description

Basic information about the country's plant protection organization. Includes details on laws, structure, staff, labs, and inspection systems.



3. Phytosanitary Requirements

Rules for importing plants and plant products. Lists what is allowed, restricted, or banned.



4. Entry Points

List of approved ports, airports, and border crossings where plants can enter the country.



5. Regulated Pests

Lists of plant pests that are either absent or present but controlled. Lists should be reviewed yearly.



6. Pest Reports

Quick alerts about introduction or spreading pests that could harm crops.



7. Emergency Actions

Reports on urgent steps taken when new pests are found.



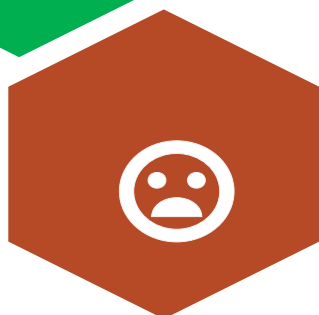
6 Bilateral NROs



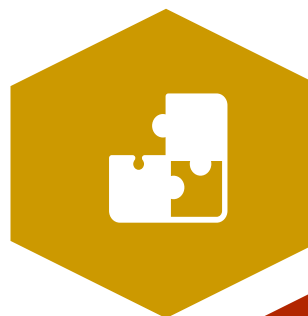
1. Organizational arrangements of plant protection



2. Rationale for phytosanitary requirements, restrictions and prohibitions



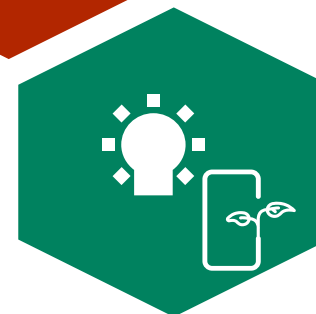
3. Significant instances of non-compliance with phytosanitary certification



4. The result of investigation regarding significant instances of non-compliance with phytosanitary certification



5. Information on the pest status



6. Technical and biological information necessary for pest risk analysis

A stylized orange map of the African continent is centered on the slide. Several leaves in shades of purple, orange, and yellow are scattered around the map, some appearing to grow from it. The background features a warm orange gradient with abstract wavy shapes in shades of green and brown on the right side.

Africa Phytosanitary Programme Africa Train-the-Trainer Workshop Phytosanitary Programme

Thank you

Train-the-Trainer workshop

IPPC Secretariat
Food and Agriculture Organization
of the United Nations (FAO)
ippc@fao.org | www.ippc.int

