



Food and Agriculture
Organization of the
United Nations



International
Plant Protection
Convention



IPPC Global Workshop on Systems Approaches

Santiago, Chile
1 – 4 December 2025

In partnership with:



Australian Government
Department of Agriculture,
Fisheries and Forestry

Administrative components: When should they be included?

**Dr. Mireille Marcotte, National Manager, Forestry and Horticulture Exports
Canadian Food Inspection Agency**



Food and Agriculture
Organization of the
United Nations



International
Plant Protection
Convention



IPPC Global
Workshop
on Systems
Approaches

Objective

Determine when to consider including administrative components, such as:

- Facility registration
- Product traceability
- Quality control systems
- Record keeping
- Roles and responsibilities (NPPOs, industry, etc...)



Facility Registration

- Registration numbers can be assigned by the NPPO and be made available to importing countries
 - by email
 - published on the NPPO's website
- Allows the importing country to verify that the exporter is officially approved

Authorized facilities in Canada to participate in the United States - Canada Greenhouse-Grown Plant Certification Program (GCP)

A list of approved facilities authorized to ship plants under the GCP to the United States when accompanied by an export certification label.

Authorization number	Authorized facility name	City/Town	Province
CAN-GCP-0041	Jolly Farmer Products Inc.	Northampton	NB
CAN-GCP-0087	K and K Greenhouses	Branchton	ON
CAN-GCP-0178	Foliera Inc.	Beamsville	ON
CAN-GCP-0001	Westwood Greenhouses Ltd.	New Hamburg	ON
CAN-GCP-0002	Farm to Canada	Mississauga	ON
CAN-GCP-0003	Rol-land Farms and Greenhouses Inc.	Blenheim	ON
CAN-GCP-0005	Oasis Greenhouses Limited	Chatham	ON
CAN-GCP-0006	Mucci Farms	Kingsville	ON
CAN-GCP-0007	Lakeview Greenhouses and Farm Ltd.	Blenheim	ON
CAN-GCP-0008	Albuna Plant Farm	Cottam	ON
CAN-GCP-0009	Trillium Floral	St. Catharines	ON



Food and Agriculture
Organization of the
United Nations



International
Plant Protection
Convention



IPPC Global
Workshop
on Systems
Approaches

Export Certification Labels

- Authorized facilities may purchase labels from any supplier meeting NPPO technical specifications.

Labels must:

- Be standardized in format and security features
- Follow required layout, font size/type.
- Include CFIA or USDA symbol + text: “*United States–Canada Greenhouse-Grown Plant Certification Program.*”
- Unique facility authorization number
- Sequential serial numbers
- Shared phytosanitary declaration

Authorization Number / Numéro d'autorisation CAN-GCP-0000	
Serial No. / N° de série 000000	
United States – Canada Greenhouse-Grown Plant Certification Program The plants have been produced under the United States – Canada Greenhouse-Grown Plant Certification Program, are free from regulated pests, practically free from other injurious pests, and meet the phytosanitary import requirements of both Canada and the United States.	Programme États-Unis – Canada de certification des végétaux cultivés en serre Les végétaux ont été cultivés dans le cadre du Programme États-Unis – Canada de certification des végétaux cultivés en serre, sont exempts d'organismes nuisibles réglementés, pratiquement exempts d'autres organismes nuisibles, et répondent aux exigences phytosanitaires d'importation du Canada et des États-Unis.
 Canadian Food Inspection Agency	Agence canadienne d'inspection des aliments 

	United States-Canada Greenhouse-Grown Plant Certification Program
The plants have been produced under the United States – Canada Greenhouse - Grown Plant Certification Program, are free from regulated pests, practically free from other injurious pests, and meet the phytosanitary import requirements of both Canada and the United States.	
State and License # <u>XXXXXXXX</u> Serial # <u>XXXXXXXX</u>	



Facility Registration

- Can be used for traceability purposes

Example of a Canadian Registration Number applies on cartons of packed fresh cherries:

A 10 digit, **uninterrupted** number- 0000000000 - that includes the following information:

- “Day-of-Year” representing the Date of Packing (3 numbers),
- Packing Facility number (2 numbers),
- Grower Number (3 numbers), and
- Orchard Number (2 numbers).



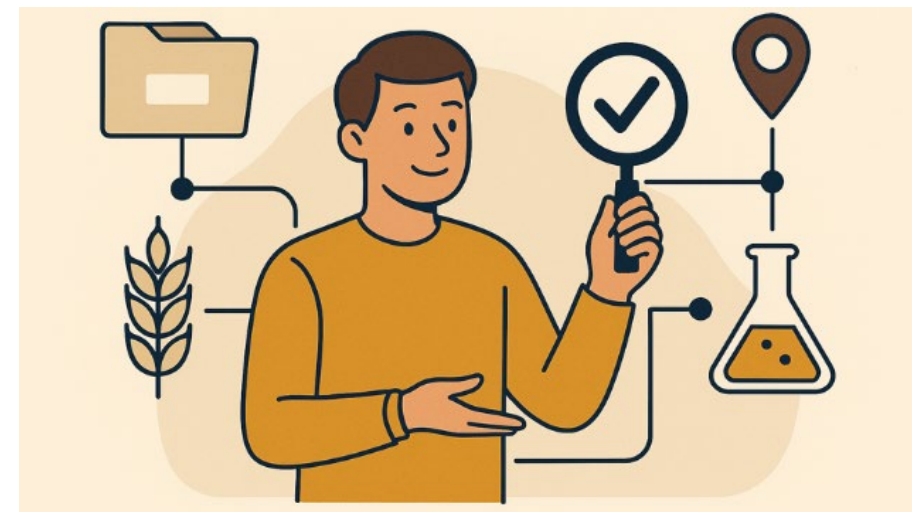
Product traceability

- Can be achieved via other means than the registration number.

For example:

The exporters have procedures that can be verified to ensure traceability of the products to:

- the production site (orchard, field, greenhouse, nursery, etc.)
 - the packing facility
 - the treatment facility or a test result
 - other
- This can be done using invoices, labels, treatment certificates, etc.





Food and Agriculture
Organization of the
United Nations



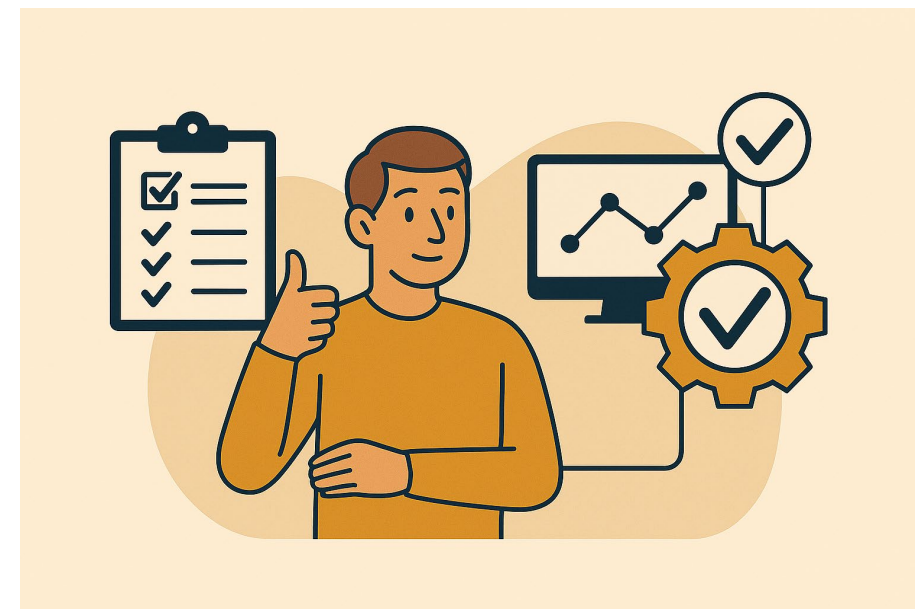
International
Plant Protection
Convention



IPPC Global
Workshop
on Systems
Approaches

Quality Control Systems

- Useful when a number of measures are part of the commercial practices
- NPPO or 3rd party oversight of the activities delivered under the systems approach
- Internal audits to ensure that procedures are strictly followed by all staff





Management Plans

Example of GCP Pest Management Plan:

- Verify plant taxa and origin against Canadian and U.S. import requirements
- Documentation review and inspection of incoming plants
- Inventory control
- Regular sanitation practices (production and handling areas kept free of weeds and unmanaged plants)
- Separation and traceability of plants
- Protection from soil and water-borne pests
- Pest scouting, detection and control
- Examination of production areas
- Inspection and safeguarding of certified plants



PEST MANAGEMENT PLAN
UNITED STATES - CANADA GREENHOUSE - GROWN PLANT CERTIFICATION PROGRAM (GCP)

Supplemental documents may be used to complete or add detail to individual sections of the pest management plan.

When a supplemental document is included in the pest management plan, indicate the name of the document and its location in the appropriate section(s).

Supplemental documents referenced in this Pest Management Plan are considered to be part of the Pest Management Plan for the purpose of the GCP compliance agreement.

Section 1 Facility and Contact Information

Facility Name Authorization Number

Mailing Address

Address City Province Postal code

Telephone number Fax number Email

☐ Check if physical address is the same as mailing address

Physical Address (include all locations)

1 City Province Postal code

[Add another physical location](#) [Remove physical location](#)

☐ Check if location map attached. If the facility is maintaining the Pest Management Plan in electronic format, locations of maps and other supplemental information should be indicated in the applicable sections.

Brief description of the business (e.g. propagation of plants from seed for sale as pre-finished plants, propagation of ornamental plants from domestic and offshore cuttings for distribution to retail etc.) (field will expand as required)

Prepared by (name of author)

GCP Manager

Last Name First Name

Signature Date

A signature is optional for facilities maintaining the GCP Pest Management Plan in electronic format.

Section 2 Amendment Record

Amended Section and Content	Approved by Facility Representative	Date	CFIA notified	Row

[Add Amendment](#) [Align Rows](#)

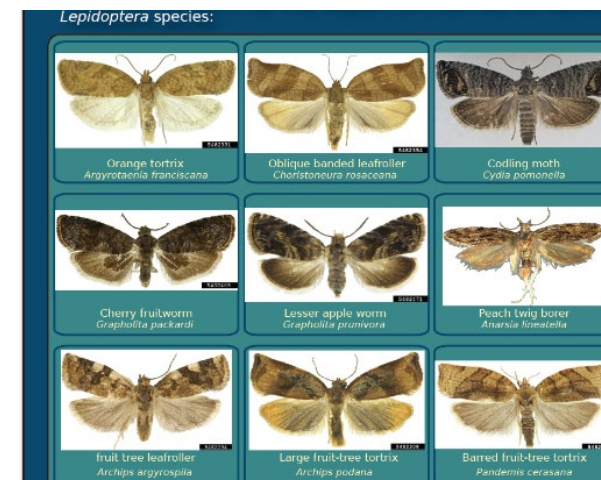
Section 3 Management, Designated Personnel and Key Functions

	Title	Name
1	Owner	
2	GCP Manager	
3	Alternate GCP Manager	



Training

- Staff responsible for phytosanitary activities in a systems approach may need to be trained and demonstrate competency
- Staff may need to be trained on :
 - Phytosanitary procedures to adhere to
 - Pests of concerns and their signs and symptoms
 - Packaging and labelling requirements
 - Etc.





Food and Agriculture
Organization of the
United Nations



International
Plant Protection
Convention



IPPC Global
Workshop
on Systems
Approaches

Record keeping

- Documents may need to be retained for a minimum of time to allow for verifications and trace back
 - In Canada, usually for a minimum of 2 years
- Facilities may need procedures for maintaining documentation and records used by the facility to track phytosanitary activities.
- Can Include training records, treatment records, treatment certificates, etc.





Food and Agriculture
Organization of the
United Nations



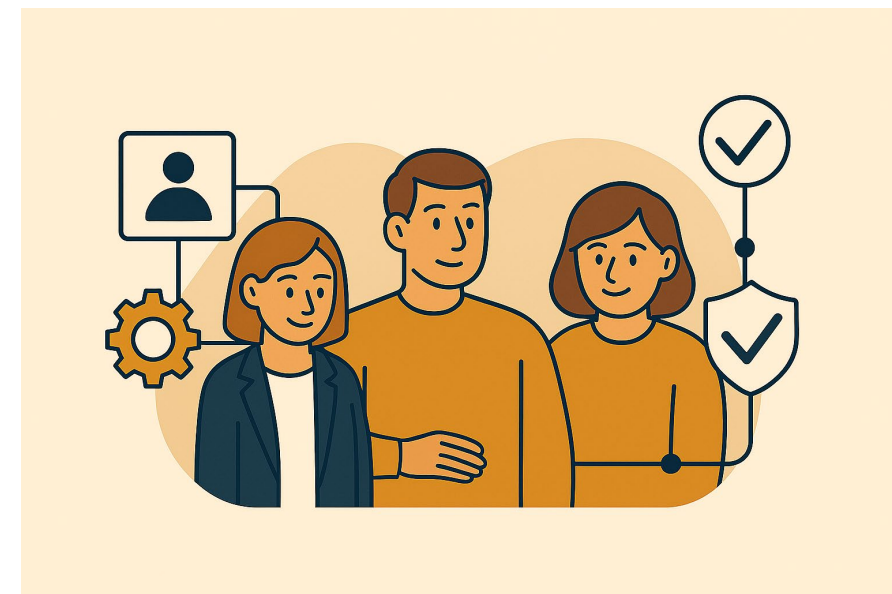
International
Plant Protection
Convention



IPPC Global
Workshop
on Systems
Approaches

Roles and responsibilities

- Exporting NPPO
 - Monitoring/auditing and reporting on system effectiveness
 - Taking appropriate corrective actions as required
 - Providing phytosanitary certificates in accordance with the requirements of the system
- Producers, packing facilities, treatment facilities, etc.
 - Be knowledgeable of the requirements of the system
 - Comply with the requirements of the system





Food and Agriculture
Organization of the
United Nations



International
Plant Protection
Convention



IPPC Global Workshop on Systems Approaches

Santiago, Chile
1 – 4 December 2025

In partnership with:



Australian Government
Department of Agriculture,
Fisheries and Forestry

Thank you