

Adobe Connect

General Presentation

(Updated: 19 February 2016)



What is Adobe Connect?

Adobe Connect is an online tool that is used to set up calls for discussion or training purposes. It allows users to talk, (video)chat, complete tests and polls, see shared screens and training material.

System requirements:

Browser:

Internet Explorer® 7.0 or newer
(preferred)

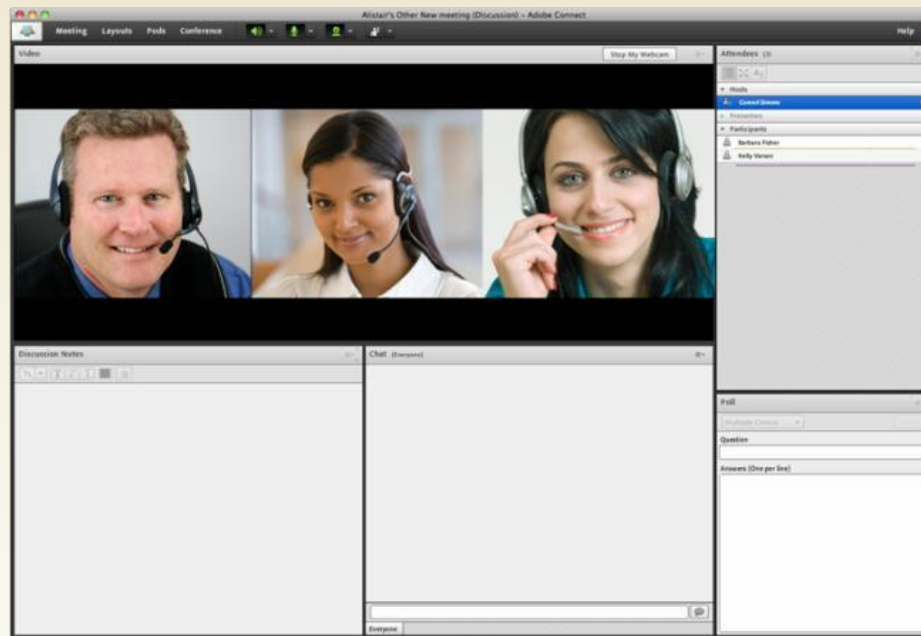
Other browsers can be used,
but might not work:

Mozilla® Firefox® 4.0 or newer

Google Chrome™ 5.0 or newer

Safari™ 3.0 or newer

Adobe® Flash® Player 10.3 or newer



Note:

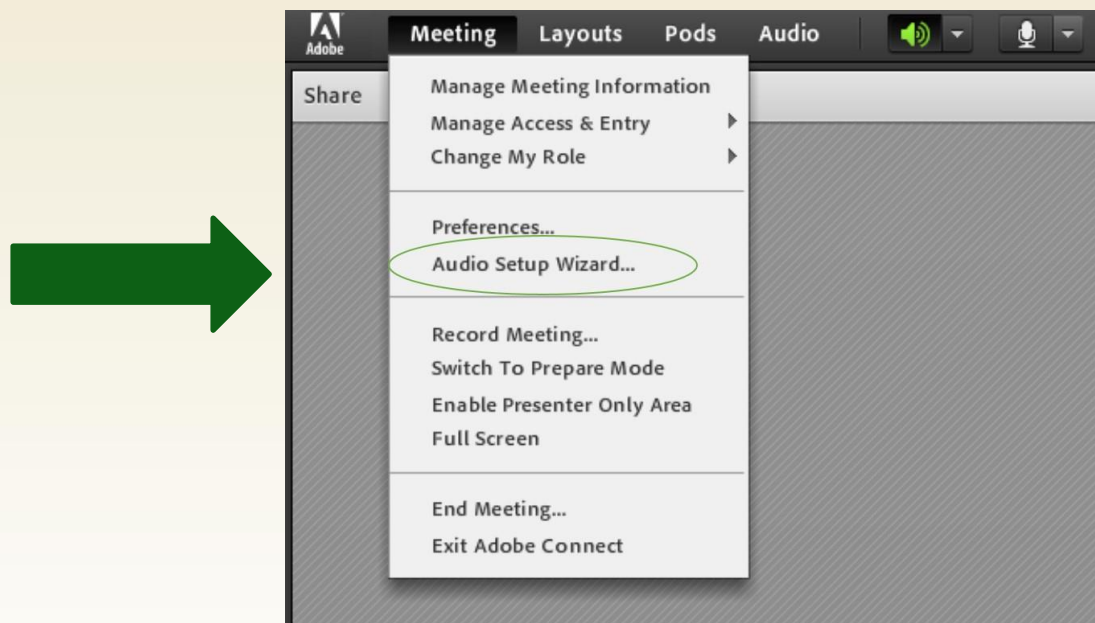
Before the training, please run the AC test:

https://admin.acrobat.com/common/help/en/support/meeting_test.htm

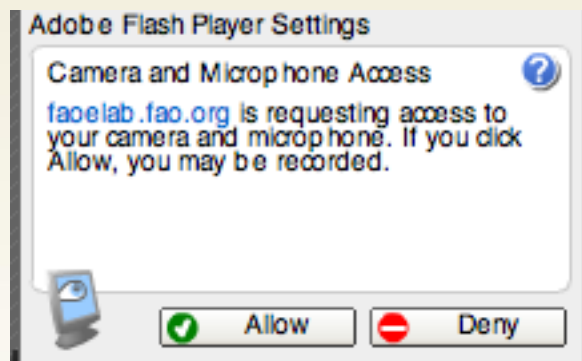
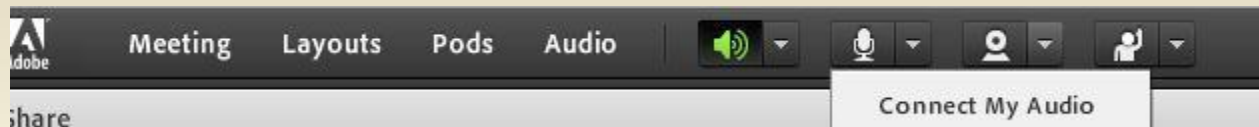


Audio Set-up Wizard

Select MEETING in menu at top of screen



Connecting audio



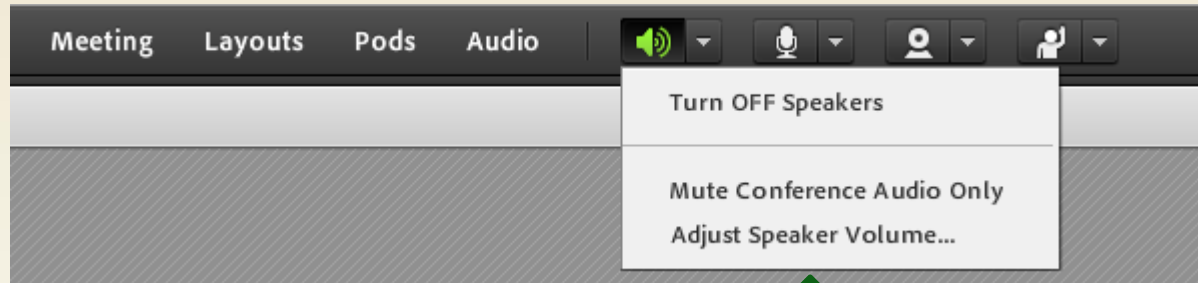
Speaker mode



Green microphone = ON

White microphone = OFF (Mute)

Adjust speaker volume

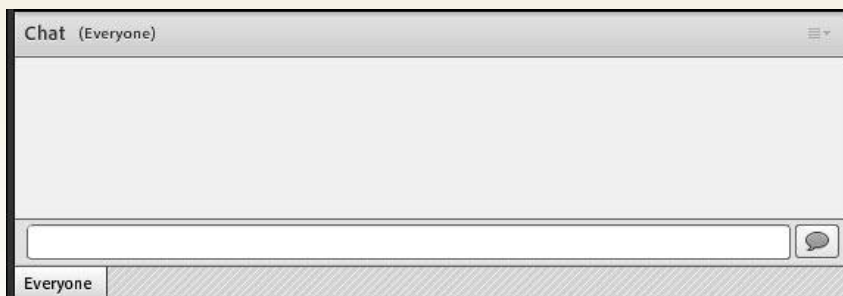
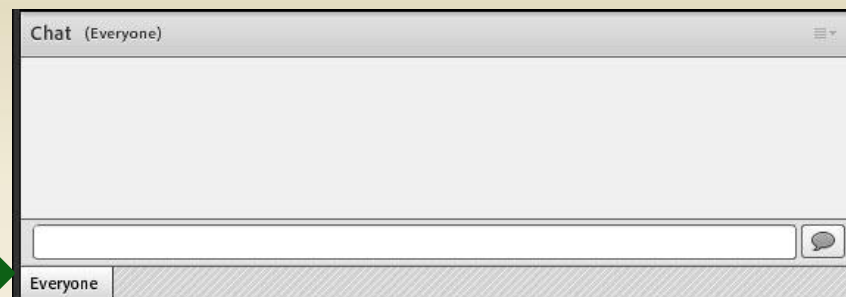


Raise your hand



Chat

**Insert your cursor
in the bottom of
the chat window
and type**




**Press the SEND
MESSAGE button**

Attendee list



Attendee List (1)

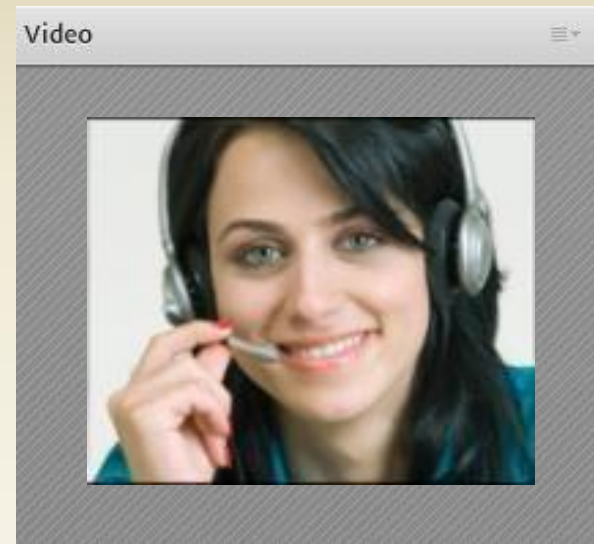
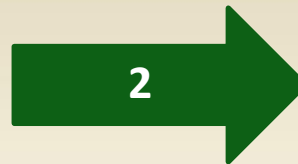
▼ Hosts (1)

 **Ester Mae Cox**

► Presenters (0)

► Participants (0)

Webcam (Optional)



Contact Information

IPPC Secretariat

Mr Martin Farren

Martin.Farren@fao.org

