

# The International Plant Protection Convention

## The IPPC Online Comment System (OCS)

<https://ocs-new.ippc.int/>

2017 Short Guide



Food and Agriculture Organization  
of the United Nations



**International Plant Protection Convention**  
Protecting the world's plant resources from pests



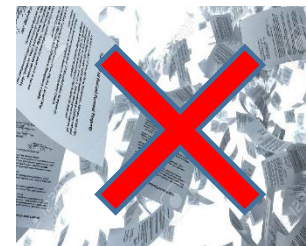
# Why do we need an OCS? Mission and benefits

**OCS mission:** To provide a simple, efficient, user-friendly online system to share, collect and compile comments on documents.



## OCS benefits:

- Easy to use and access
- Confidential and safe
- Implements a standard commenting format
- Faster and more accurate compilation process



# Online Comment System (OCS)

**URL:** <https://ocs-new.ippc.int/>

Compatible with main browsers and devices

## User types and roles:

**Review Owner:** IPPC Secretariat (OCS role: Admin-Author)

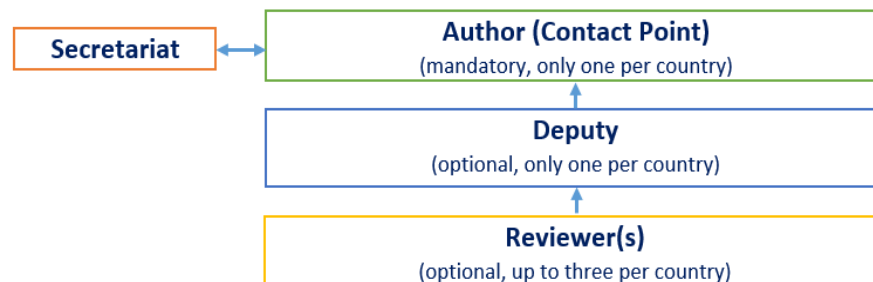
**Author:** IPPC Contact Point (OCS role for members: Admin-Author; OCS role for observers: Author)

**Deputy:** user delegated by Author to perform all actions but not user creation and final publishing (OCS role: Author)

**Reviewer:** all other users, able to insert comments in the system within a workgroup if invited

**Participants (to a review):** Author, Deputy, Reviewer

**User:** everyone holding an OCS account





# OCS homepage

**IPPC - OCS**EnglishEspañolFrançais

Welcome to the IPPC Online Comment System (OCS)!

The IPPC OCS resource page is available [here](#).  
The PleaseReview Help page is available [here](#).

Draft ISPMs currently under consultation are available for your download [here](#).

☐ Remember me [Reset Password](#)

Login

**IPPC Online Comment System. Contact Us: [IPPC-OCS@fao.org](mailto:IPPC-OCS@fao.org)**

Version 6.1.4    © PleaseTech Ltd. 2004-2016 See Help for 3rd Party legal notices





# IPPC Workgroup

Visual indicator of your current reviews

Checkboxes to filter your reviews

Workgroup indicator

IPPC - OCS

Admin

Review

Version 6.1.4

Logged in as: IPPC Secretariat in Workgroup IPPC

please review

[review](#)
[new review](#)
[my reviews](#)

[distribution lists](#)
[manage lists](#)

my reviews

[Reviews I'm in](#)
[Reviews I own](#)
[Search for reviews](#)
[Recycle bin](#)

Review status is
☒ Not started
☒ In progress
☐ Closed
☐ Completed
Include: ☒ All work

Due Date	Review Title	Status	Details	Review
30 Sep 2017 11:45 PM	2017 First consultation Robert	Not Started	<a href="#">Select</a>	
7 Sep 2017 11:45 PM	New test review	In Progress	<a href="#">Select</a>	<a href="#">Enter</a>
7 Sep 2017 11:45 PM	Test 200000000	In Progress	<a href="#">Select</a>	<a href="#">Enter</a>
1 Sep 2017 11:45 PM	Test review for DPs	In Progress	<a href="#">Select</a>	<a href="#">Enter</a>
1 Sep 2017 11:45 PM	Test review for DPs 2	In Progress	<a href="#">Select</a>	<a href="#">Enter</a>
5 Aug 2017 11:45 PM	Test review for Contact Points	In Progress	<a href="#">Select</a>	<a href="#">Enter</a>
27 Jun 2017 11:45 PM	Test review for Pierpaolo	In Progress	<a href="#">Select</a>	<a href="#">Enter</a>
23 Jun 2017 11:45 PM	IPPC Yerevan workshop test	In Progress	<a href="#">Select</a>	<a href="#">Enter</a>
2 May 2017 12:00 AM	Test review for IPPC Secretariat	Overdue	<a href="#">Select</a>	<a href="#">Enter</a>

[printable view](#)

© PleaseTech Ltd. 2004-2016

See Help for 3rd Party legal notices

Link to review control panel

Link to enter review

# Country Workgroups

Workgroup indicator

IPPC - OCS

Admin

Review

Version 6.1.4

Logged in as: **IPPC Secretariat** in Workgroup » Lithuania

review

my reviews

distribution lists

manage lists

my reviews

Reviews I'm in

Reviews I own

Search for reviews

Recycle bin

Review status is
☒ Not started
☒ In progress
☐ Closed
☐ Completed

Include:
☒ All workgroups

Due Date	Review Title	Status	Details	Review
30 Sep 2017 11:45 PM	2017 First consultation Robert	Not Started	<a href="#">Select</a>	
7 Sep 2017 11:45 PM	New test review	In Progress	<a href="#">Select</a>	<a href="#">Enter</a>
7 Sep 2017 11:45 PM	Test 200000000	In Progress	<a href="#">Select</a>	<a href="#">Enter</a>
1 Sep 2017 11:45 PM	Test review for DPs	In Progress	<a href="#">Select</a>	<a href="#">Enter</a>
1 Sep 2017 11:45 PM	Test review for DPs 2	In Progress	<a href="#">Select</a>	<a href="#">Enter</a>
5 Aug 2017 11:45 PM	Test review for Contact Points	In Progress	<a href="#">Select</a>	<a href="#">Enter</a>
27 Jun 2017 11:45 PM	Test review for Pierpaolo	In Progress	<a href="#">Select</a>	<a href="#">Enter</a>
23 Jun 2017 11:45 PM	IPPC Yerevan workshop test	In Progress	<a href="#">Select</a>	<a href="#">Enter</a>
2 May 2017 12:00 AM	Test review for IPPC Secretariat	Overdue	<a href="#">Select</a>	<a href="#">Enter</a>

[printable view](#)

© PleaseTech Ltd. 2004-2016  
See Help for 3rd Party legal notices



Food and Agriculture Organization  
of the United Nations



International Plant Protection Convention  
Protecting the world's plant resources from pests

# Managing users in Country Workgroups

1



2



Add new user



2



© PleaseTech Ltd. 2004-2016  
See Help for 3rd Party legal notices

© PleaseTech Ltd. 2004-2016  
See Help for 3rd Party legal notices

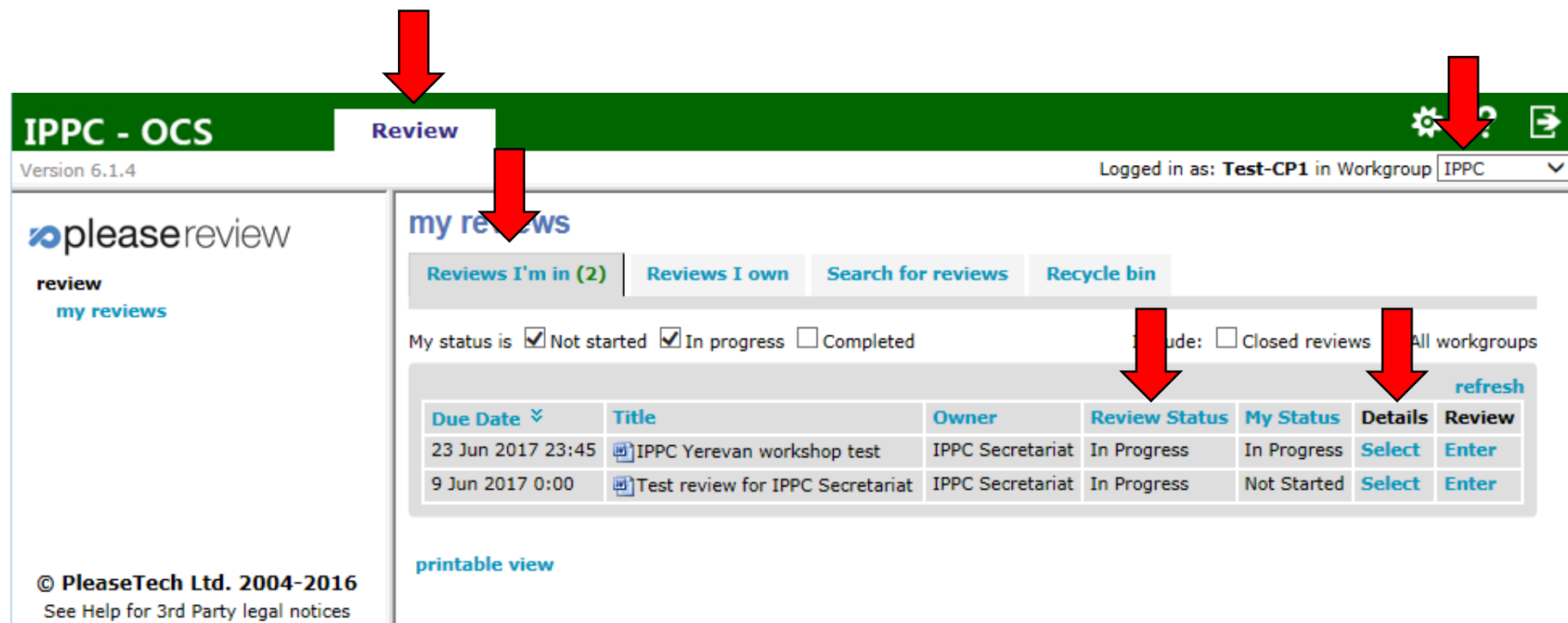


Food and Agriculture Organization  
of the United Nations



International Plant Protection Convention  
Protecting the world's plant resources from pests

# Creating a sub-review (1)



**IPPC - OCS** **Review** Version 6.1.4 Logged in as: **Test-CP1** in Workgroup **IPPC**

**my reviews**

[Reviews I'm in \(2\)](#) [Reviews I own](#) [Search for reviews](#) [Recycle bin](#)

My status is ☒ Not started ☒ In progress ☐ Completed Include: ☐ Closed reviews ☐ All workgroups [refresh](#)

Due Date ▾	Title	Owner	Review Status	My Status	Details	Review
23 Jun 2017 23:45	IPPC Yerevan workshop test	IPPC Secretariat	In Progress	In Progress	<a href="#">Select</a>	<a href="#">Enter</a>
9 Jun 2017 0:00	Test review for IPPC Secretariat	IPPC Secretariat	In Progress	Not Started	<a href="#">Select</a>	<a href="#">Enter</a>

[printable view](#)

© PleaseTech Ltd. 2004-2016  
See Help for 3rd Party legal notices



## Creating a sub-review (2)

**IPPC - OCS**

**Review**

Version 6.1.4
 Logged in as: **Test-CP1** in Workgroup **IPPC**

review

[my reviews](#)

### review control panel - Test review for IPPC Secretariat

**Test review for IPPC Secretariat (id 247)**

**Review Status** In Progress (Due: 9 Jun 2017 0:00; Started: 19 Aug 2016 11:25)

**participants**

Name	Status	Role	Summary	Comments
Test-CP1	Not Started	Reviewer		0

**your comments**

Docume	Open	Accepted	Merged	Closed	Withdrawn
OCS Training Scripts.docx	0	0	0	0	0

[Create Sub-Review](#)

[Status](#)
[Download copy](#)
[Delegate](#)
[Copy Emails](#)

View Report

Enter Review

Back

© PleaseTech Ltd. 2004-2016  
 See Help for 3rd Party legal notices

## Creating a sub-review (3)

IPPC - OCS

Admin

Review

Version 6.1.4

Logged in as: **Test-CP1** in Workgroup » Test CP1

review

[new review](#)
[my reviews](#)

distribution lists

[manage lists](#)

new review step 1: specify review details

You are now in another workgroup with Author role

Title

Test review for IPPC Secretariat [Sub-review]

Description

Review Type

Default

ReviewFlow

☐ Creates a multi-phase review

End Date

date : 8 Jun 2017

time : 

00

00

< June 2017 >

Mon	Tue	Wed	Thu	Fri	Sat	Sun
29	30	31	1	2	3	4
5	6	7	8	9	10	11
12	13	14	15	16	17	18
19	20	21	22	23	24	25
26	27	28	29	30	1	2
3	4	5	6	7	8	9

Next

© PleaseTech Ltd. 2004-2016

See Help for 3rd Party legal notices

# Creating a sub-review (4)

IPPC - OCS

Admin

Review

Version 6.1.4

Logged in as: **Test-CP1** in Workgroup » Test CP1

review

[new review](#)
[my reviews](#)

[distribution lists](#)
[manage lists](#)

new review step 2: upload documents

documents already attached to this review:

Title	Type	Status
OCS Training Scripts.docx	Review	Successful

Drag your document(s) onto this box to upload or click here for the upload dialog

Advanced Options

Previous

Next

Food and Agriculture Organization  
of the United Nations

International Plant Protection Convention  
Protecting the world's plant resources from pests

## Creating a sub-review (5)

IPPC - OCS

Admin

Review

Version 6.1.4

Logged in as: **Test-CP1** in Workgroup » Test CP1

please review

review

new review

my reviews

distribution lists

manage lists

new review step 3: specify participants

add new participants

Show members

Reviewer:

Add roles: [Other roles](#)

Add

participants already included on this review:

Name	Email	Role	Details	Participant
Test-CP1	testtest111@test.it	Owner	<a href="#">Edit</a>	<a href="#">Remove</a>

[Change workgroup](#)
[Manage distribution lists](#)
[Add users](#)

Previous

Next



# Creating a sub-review (6)

IPPC - OCS

Admin

Review

Version 6.1.4

Logged in as: **Test-CP1** in Workgroup » Test CP1

pleasereview

review

new review

my reviews

distribution lists

manage lists

new review step 4 : review options

Review Options

Email Options

ReviewZone Options

Subteams

offline settings

Allow reviewers to download a copy of the document

Allow reviewers to review documents offline

independent review

Reviewers do not see each others comments. Authors see all comments

allow proposed changes

Allow proposed changes in review

allow sub-review

Allow review participants to create a sub-review from this review

delegation

Allow review participants to delegate?

mandatory categorization

Force review participants to select a comment category

auto-update accepted changes

automatically update with accepted changes from the master review

Save

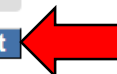
Previous

Next

© PleaseTech Ltd. 2004-2016

See Help for 3rd Party legal notices

100%



# Creating a sub-review (7)

IPPC - OCS

Admin

Review

Version 6.1.4

Logged in as: **Test-CP1** in Workgroup » Test CP1 ▾

review

[new review](#)
[my reviews](#)

distribution lists

[manage lists](#)

new review step 5: verify details and start review or put it on hold

review details

Title	Test review for IPPC Secretariat [Sub-review]		
Description			
Status	Not Started		
End Date	8 Jun 2017 0:00		

participants

Name	Email	Role
Test-CP1	testtest111@test.it	Owner
Test-CP1Rev1	t.e.s.t2@rev.it	Reviewer

documents

File name	Title	Preparation	
OCS Training Scripts.docx	OCS Training Scripts.docx	Successful	<a href="#">Preview</a>

[Delete Review](#)
[Review Options](#)

Put Review on Hold

Start Review

© PleaseTech Ltd. 2004-2016

See Help for 3rd Party legal notices

# Entering the review

**IPPC - OCS**
Admin
Review
Version 6.1.4

Logged in as: **Test-CP1** in Workgroup » Test CP1

please review

review

[new review](#)

[my reviews](#)

distribution lists

[manage lists](#)

© PleaseTech Ltd. 2004-2016

See Help for 3rd Party legal notices

**my reviews**

[Reviews I'm in](#)
[Reviews I own](#)
[Search for reviews](#)
[Recycle bin](#)

Review status is
 ☒ Not started
 ☒ In progress
 ☐ Closed
 ☐ Completed
 Include: ☐ All workgroups

Due Date	Review Title	Status	Details	Review
29 Jun 2017 23:45	IPPC Yerevan workshop test [Sub-review] 1	In Progress	<a href="#">Select</a>	<a href="#">Enter</a>
22 Jun 2017 23:45	IPPC Yerevan workshop test [Sub-review]	In Progress	<a href="#">Select</a>	<a href="#">Enter</a>
8 Jun 2017 0:00	Test review for IPPC Secretariat [Sub-review]	Not Started	<a href="#">Select</a>	

[printable view](#)

The screenshot displays the PleaseReview web application interface. On the left is a **Navigation pane** showing a tree structure of the document: Draft ISPM: International movement of seeds (2009-003), Contents, 1. Adoption, 2. INTRODUCTION, 2.1 Scope, 2.2 References, 2.3 Definitions, 2.4 Outline of Requirements, 3. BACKGROUND, 4. IMPACT ON BIODIVERSITY AND THE ENVIRONMENT, and 5. REQUIREMENTS. The main area shows the document content for 'Draft ISPM: International movement of seeds (2009-003)', including a 'Contents' section with links to various parts of the document. A blue box labeled **Review pane** is overlaid on the right side of the document content. On the far right is a **Comment pane** titled 'comments on Test 1 En', showing a comment entry form and a list of other comments. A blue box labeled **Comment pane** is overlaid on the right side of the comment pane. The bottom of the interface shows a 'Status box' with a disclaimer and a table with document metadata.

**Navigation pane**

**Review pane**

**Comment pane**

**Status box**

This is not an official part of the standard and it will be modified by the IPPC Secretariat after adoption.

Date of this document	2014-05-21
Document category	Draft ISPM (priority 1)
Current document stage	To member consultation
Major stages	2009-11 SC introduced topic International movement of seed (2009-003) 2010-03 CPM-5 added topic 2010-12 SC approved draft specification for member consultation via a decision

© PleaseTech Ltd. 2004-2015  
See Help for 3rd Party legal notices



# Adding general comments

NOTE FROM SECRETARIAT: The proper formatting for tables and keys will be applied before publishing the diagnostic protocol.

**Draft Annex SPM 27: *Fusarium circinatum* (2006-021)**

<b>Status box</b>	
<i>This is not an official part of the standard and it will be modified by the IPPC Secretariat after adoption.</i>	
<b>Date of this document</b>	2016-12-15
<b>Document category</b>	Draft annex to ISPM 27 (Diagnostic protocols for regulated pests)
<b>Current document stage</b>	To DP period for adoption
<b>Origin</b>	Work programme topic: Fungi and fungus-like organisms, CPM-1 (2006) Original subject: <i>Gibberella circinata</i> (syn. of <i>Fusarium circinatum</i> )
<b>Major stages</b>	2006-05 SC added original subject: <i>Gibberella circinata</i> (2006-021) 2015-03 Expert Consultation on draft DPs 2015-06 TPDP face-to-face meeting 2015-11 SC noted title change from " <i>Fusarium moniliformis</i> / <i>moniliforme</i> syn. <i>F. circinatum</i> " to " <i>Fusarium circinatum</i> " 2016-01 DP drafting group revised document 2016-03 SC e-decision for approval for first consultation (2016_eSC_May_07) 2016-07 First consultation 2016-11 TPDP recommended to SC for adoption (2016_eTPDP_Nov_02) 2016-11 SC e-decision for approval for adoption (2017_eSC_May_03)
<b>Discipline leads history</b>	Hans DE GRUYTER (NL, Discipline Lead)

**comments on 2006-021\_DraftISPM27\_Fusarium\_2016-12-15.docx**

**Comments**

enter an optional comment:  
<<click to enter a comment>>

**paragraph text**  
no paragraph text available  
Category: <Blank>

**Apply Apply+Accept Cancel**

Navigate by: << comments: >> **Accept/Close all**

**other general comments:**  
Reason? Never ☒ Track Changes

# Adding comments to paragraphs

This diagnostic protocol was adopted by the Commission on Phytosanitary Measures in 20--.

The annex is a prescriptive part of ISPM 27 (*Diagnostic protocols for regulated pests*).

## 1. Pest Information

**Phytophthora ramorum** Werres, de Cock & Man in't Veld (Werres *et al.*, 2001) is an oomycete pathogen of unknown origin (Brasier *et al.*, 2004). It is considered to have been introduced into western North America and western Europe in the late twentieth century by the ornamental plant trade (Prospero *et al.*, 2007; Mascheretti *et al.*, 2008; Goss *et al.*, 2011; Grünwald *et al.*, 2012; Van Poucke *et al.*, 2012). *P. ramorum* attacks a wide range of trees and shrubs in nurseries and in the field, causing leaf blight, stem cankers, bleeding stem lesions and dieback.

In North America the pathogen was found in the early 1990s causing mortality of *Quercus* (oak) trees and *Lithocarpus densiflorus* (tanoaks), mainly in California and Oregon (Rizzo *et al.*, 2002. Named "Sudden Oak Death" (SOD), the disease has reached epidemic proportions in North America at present. The pathogen was originally considered a woodland disease but since 2003 nursery plants in several states of the United States have been affected. The disease has also been found in Canada.

In Europe *P. ramorum* has been observed in Germany since 1993 causing twig blight of rhododendron in nurseries and on mature bushes in gardens. In the Netherlands it was found in 1998 on diseased *Viburnum* sp. (Werres and Marwitz, 1997; Werres *et al.*, 2001). The pathogen has now been recorded in more than 20 European countries, predominantly on ornamental plants in nurseries and in a few managed gardens. In 2009, however, *P. ramorum* was unexpectedly found infecting and killing large numbers of *Larix kaempferi* (Japanese larch) trees in south-west England. Heavy dieback and mortality of plantation *L. kaempferi* trees in western Britain and Northern Ireland have resulted in the felling of 0.6 million trees (Brasier and Webber, 2010; Webber *et al.*, 2010).

This unexpected finding emphasizes that although many of its hosts are known, the main threat of *P. ramorum* is to tree species and other ecologically important plants such as heathland species. The pathogen is, however, most commonly observed on *Camellia*, *Magnolia*, *Pieris*, *Quercus* (in particular *Q. acuta*, *Q. agrifolia*, *Q. cerris*, *Q. chrysolepis*, *Q. ilex* and *Q. rubra* (red oak) species), *Rhododendron* and *Viburnum*. Recent findings and lists of the known hosts for *P. ramorum* can be found in CABI (n.d.), COMTF (n.d.), Fera (2014a, n.d.) and USDA-APHIS (2014a). Disease symptoms and host plants are listed and regularly updated on websites (COMTF, n.d.; Fera, 2014a).

*P. ramorum* has a complex life cycle and is adapted to cool temperatures, with 20 °C being optimal. Although *P. ramorum* is soil-borne, asexually produced sporangia are formed on the surface of infected leaves or twigs and, depending on environmental conditions, are locally splash-dispersed or spread over long distances by wind and wind-driven rain (Davidson *et al.*, 2005). Rivers, streams and other waterways can also carry the sporangia and thus spread the pathogen (Defra, 2007). Sporangia that land on suitable hosts germinate to produce hyphae. In the presence of water, sporangia will release motile zoospores that encyst on the host surface, germinate and penetrate the host tissue, forming a colony from which more sporangia are produced. These sporangia repeat the cycle and with enough generations, under the right environmental conditions, on

**comments on Test Robert** Paragraph Id 49  
refresh

Comments | Bookmarks | Zones

enter an optional comment:  
<<click to enter a comment>>

and/or edit the text of the paragraph below: +

Font family: [dropdown] B I U x x' NB SP

Phytophthora ramorum Werres, de Cock & Man in't Veld (Werres *et al.*, 2001) is an oomycete pathogen of unknown origin (Brasier *et al.*, 2004). It is considered to have been introduced into western North America and western Europe in the late twentieth century by the ornamental plant trade (Prospero *et al.*, 2007; Mascheretti *et al.*, 2008; Goss *et al.*, 2011; Grünwald *et al.*, 2012; Van Poucke *et al.*, 2012).

Category: [dropdown]

Apply Apply+Accept Cancel

Navigate by: < all > Accept/Close all

other comment

Reason? Never [dropdown] [x] Track Changes

Proposed change (1) by IPPC Secretariat on 24 May 2017  
2:25 PM Reply Accept Close Delete Edit

Category: EDITORIAL

Phytophthora ramorum Werres, de Cock & Man in't Veld (Werres *et al.*, 2001) is an oomycete pathogen of unknown origin (Brasier *et al.*, 2004). It is considered to have been introduced into western North America and western Europe in the late twentieth century by the ornamental plant trade (Prospero *et al.*, 2007; Mascheretti *et al.*, 2008; Goss *et al.*, 2011; Grünwald *et al.*, 2012; Van Poucke *et al.*, 2012). *P. ramorum* attacks a wide range of trees and shrubs in nurseries and in the field, causing leaf blight, stem cankers, bleeding stem lesions and dieback.

IPPC Secretariat (24 May 2017 2:25 PM)  
To correct the spelling

# Comments received during in-country review

Contents

129 10 Days Hours

This diagnostic protocol was adopted by the Commission on Phytosanitary Measures in 20--.

The annex is a prescriptive part of ISPM 27 (*Diagnostic protocols for regulated pests*).

## 1. Pest Information

**Phytophthora ramorum** Werres, de Cock & Man in't Veld (Werres *et al.*, 2001) is an oomycete pathogen of unknown origin (Brasier *et al.*, 2004). It is considered to have been introduced into western North America and western Europe in the late twentieth century by the ornamental plant trade (Prospero *et al.*, 2007; Mascheretti *et al.*, 2008; Goss *et al.*, 2011; Grünwald *et al.*, 2012; Van Poucke *et al.*, 2012). *P. ramorum* attacks a wide range of trees and shrubs in nurseries and in the field, causing leaf blight, stem cankers, bleeding stem lesions and dieback.

In North America the pathogen was found in the early 1990s causing mortality of *Quercus* (oak) trees and *Lithocarpus densiflorus* (tanoaks), mainly in California and Oregon (Rizzo *et al.*, 2002). Named "Sudden Oak Death" (SOD), the disease has reached epidemic proportions in North America at present. The pathogen was originally considered a woodland disease but since 2003 nursery plants in several states of the United States have been affected. The disease has also been found in Canada.

In Europe *P. ramorum* has been observed in Germany since 1993 causing twig blight of rhododendron in nurseries and on mature bushes in gardens. In the Netherlands it was found in 1998 on diseased *Viburnum* sp. (Werres and Marwitz, 1997; Werres *et al.*, 2001). The pathogen has now been recorded in more than 20 European countries, predominantly on ornamental plants in nurseries and in a few managed gardens. In 2009, however, *P. ramorum* was unexpectedly found infecting and killing large numbers of *Larix kaempferi* (Japanese larch) trees in south-west England. Heavy dieback and mortality of plantation *L. kaempferi* trees in western Britain and Northern Ireland have resulted in the felling of 0.6 million trees (Brasier and Webber, 2010; Webber *et al.*, 2010).

This unexpected finding emphasizes that although many of its hosts are known, the main threat of *P. ramorum* is to tree species and other ecologically important plants such as heathland species. The pathogen is, however, most commonly observed on *Camellia*, *Magnolia*, *Pieris*, *Quercus* (in particular *Q. acuta*, *Q. agrifolia*, *Q. cerris*, *Q. chrysolepis*, *Q. ilex* and *Q. rubra* (red oak) species), *Rhododendron* and *Viburnum*. Recent findings and lists of the known hosts for *P. ramorum* can be found in CABI (n.d.), COMTF (n.d.), Fera (2014a, n.d.) and USDA-APHIS (2014a). Disease symptoms and host plants are listed and regularly updated on websites (COMTF, n.d.; Fera, 2014a).

*P. ramorum* has a complex life cycle and is adapted to cool temperatures, with 20 °C being optimal. Although *P. ramorum* is soil-borne, asexually produced sporangia are formed on the surface of infected leaves or twigs and, depending on environmental conditions, are locally splash-dispersed or spread over long distances by wind and wind-driven rain (Davidson *et al.*, 2005). Rivers, streams and other waterways can also carry the sporangia and thus spread the pathogen (Defra, 2007). Sporangia that land on suitable hosts germinate to produce hyphae. In the presence of water, sporangia will release motile zoospores that encyst on the host surface, germinate and penetrate the host tissue, forming a colony from which more sporangia are produced. These sporangia repeat the cycle and with enough generations, under the right environmental conditions, an

comments on Test Robert

Paragraph Id 49

refresh

Comments

Bookmarks

Zones

enter an optional comment:

<<click to enter a comment>>

and/or edit the text of the paragraph below:

Font family

B I U

×

×

NB

SP

Phytophthora ramorum Werres, de Cock & Man in't Veld (Werres *et al.*, 2001) is an oomycete pathogen of unknown origin (Brasier *et al.*, 2004). It is considered to have been introduced into western North America and western Europe in the late twentieth century by the ornamental plant trade (Prospero *et al.*, 2007; Mascheretti *et al.*, 2008; Goss *et al.*, 2011; Grünwald *et al.*, 2012; Van Poucke *et al.*, 2012). *P. ramorum* attacks a wide range of trees and shrubs in nurseries and in the field, causing leaf blight, stem cankers, bleeding stem lesions and dieback.

Category: <Blank>

Apply

Apply+Accept

Cancel

Navigate by: << all comments: >>

Accept/Close all

other comments:

Give Reason? Never

Track Changes

Proposed change (1) by IPPC Secretariat on 24 May 2017

2:25 PM Reply Accept Close Delete Edit

Category : EDITORIAL

Phytophthora ramorum Werres, de Cock & Man in't Veld (Werres *et al.*, 2001) is an oomycete pathogen of unknown origin (Brasier *et al.*, 2004). It is considered to have been introduced into western North America and western Europe in the late twentieth century by the ornamental plant trade (Prospero *et al.*, 2007; Mascheretti *et al.*, 2008; Goss *et al.*, 2011; Grünwald *et al.*, 2012; Van Poucke *et al.*, 2012). *P. ramorum* attacks a wide range of trees and shrubs in nurseries and in the field, causing leaf blight, stem cankers, bleeding stem lesions and dieback.

IPPC Secretariat (24 May 2017 2:25 PM)

To correct the spelling



# Publishing comments (for in-country reviews)

**NOTE FROM SECRETARIAT:** The proper formatting for tables and keys will be applied before publishing the diagnostic protocol.

**Draft Annex to ISPM 27: *Fusarium circinatum* (2006-021)**

<b>History 2 box</b>	
This is not an official part of the standard and it will be modified by the IPPC Secretariat after adoption.	
<b>Date of this document</b>	2016-12-15
<b>Document category</b>	Draft annex to ISPM 27 (Diagnostic protocols for regulated pests)
<b>Current document stage</b>	To DP notification period for adoption
<b>Origin</b>	Work programme topic: Fungi and fungus-like organisms, CPM-1 (2006) Original subject: <i>Gibberella circinata</i> (syn. of <i>Fusarium circinatum</i> )
<b>Major stages</b>	2006-05 SC added original subject: <i>Gibberella circinata</i> (2006-021) 2015-03 Expert Consultation on draft DPs 2015-06 TPDP face-to-face meeting 2015-11 SC noted title change from " <i>Fusarium moniliformis</i> / <i>moniliforme</i> syn. <i>F. circinatum</i> " to " <i>Fusarium circinatum</i> " 2016-01 DP drafting group revised document 2016-03 SC e-decision for approval for first consultation (2016_eSC_May_07) 2016-07 First consultation 2016-11 TPDP recommended to SC for adoption (2016_eTPDP_Nov_02) 2016-11 SC e-decision for approval for adoption (2017_eSC_May_03)
<b>Discipline leads history</b>	Hans DE GRUYTER (NL, Discipline Lead) Robert TAYLOR (NZ, Referee)
<b>Consultation on technical level</b>	The first draft of this diagnostic protocol was written by: - Ana Pérez-Sierra (Forest Research, United Kingdom) - Renaud loos (ANSES, France) - Mónica Berbegal Martínez (Universidad Politécnica de Valencia, Spain).  In addition, the draft has been subject to expert review and the following international experts submitted comments: - Ms Jacqueline Edwards (Victorian Government Department of Economic Development, Jobs, Transport and Resources, Australia) - Mr William Muiru (University of Nairobi, Kenya).
<b>Main discussion points during development of the diagnostic protocol</b>	- It is agreed by the authors that the name <i>Fusarium circinatum</i> is used with <i>Gibberella circinata</i> as synonym, following Geiser et al. (2013). Is morphological identification reliable enough to consider the pathogen present or not? Yes, if all the characteristic features are observed, there is no doubt about the identification. In case one or several features are missing or doubtful, then morphological identification may not be reliable. - Footnotes for brand names (based on SC decision and according to TPDP instruction to authors): If in the DP there is more than one mention to a brand name, the second mention (and the subsequent mentions) to a brand name shall be associated with the footnote number with the full text (e.g. If the first mention to a brand name is "footnote 1", the subsequent mentions to brand names should be accompanied by the same footnote number).
<b>Notes</b>	This is a draft document. 2016-01-15 Edited 2016-11-07 Edited

**comments on 2006-021\_DraftISPM27\_Fusarium\_2016-12-15.docx**

General Comments refresh

Comments

enter an optional comment:  
<<click to enter a comment>>

paragraph text  
no paragraph text available

Category: <Blank>

Apply Apply+Accept Cancel

Navigate by: << all comments: >> Accept/Close all

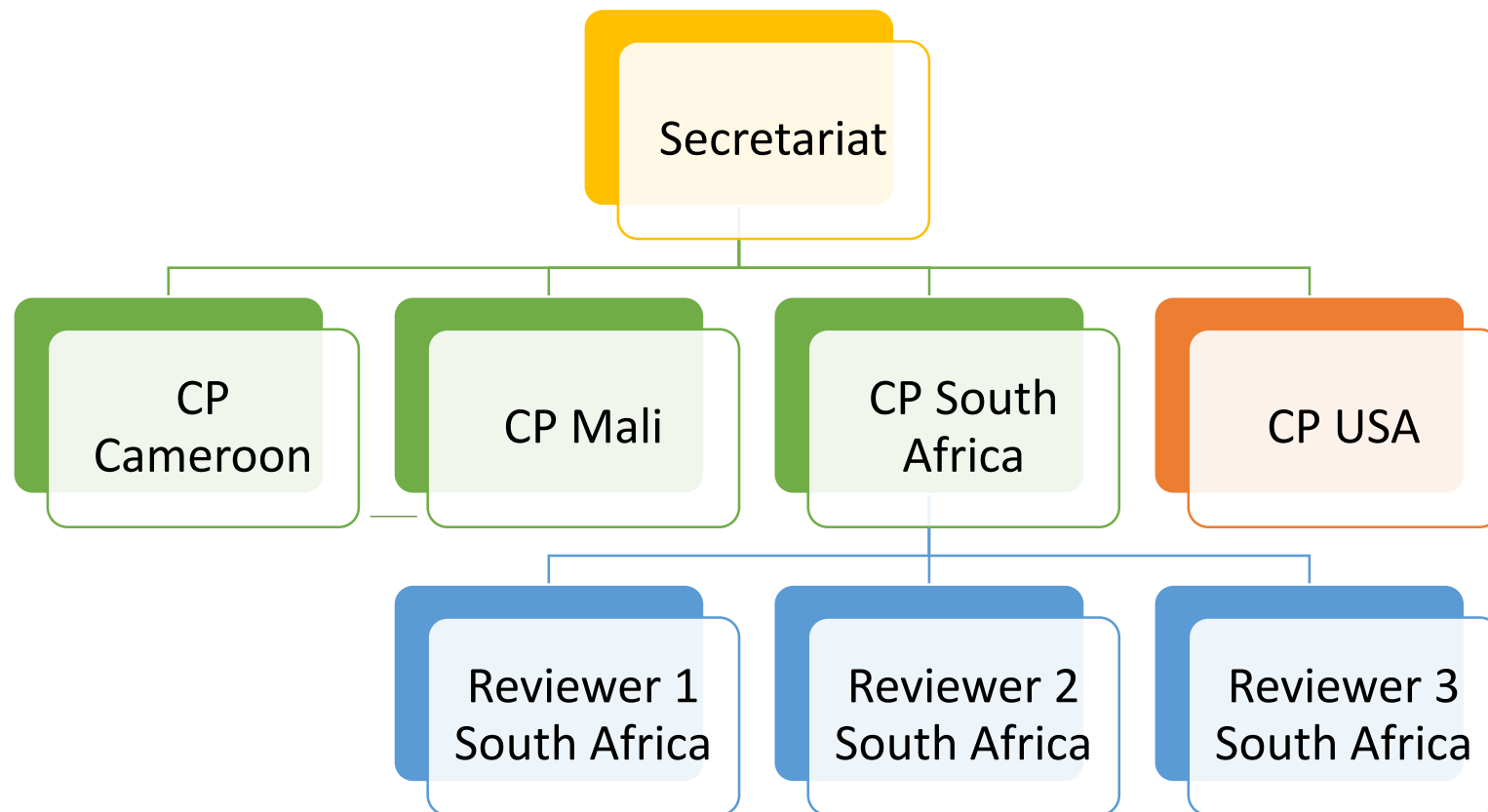
other general comments:

Give Reason? Never ☒ Track Changes



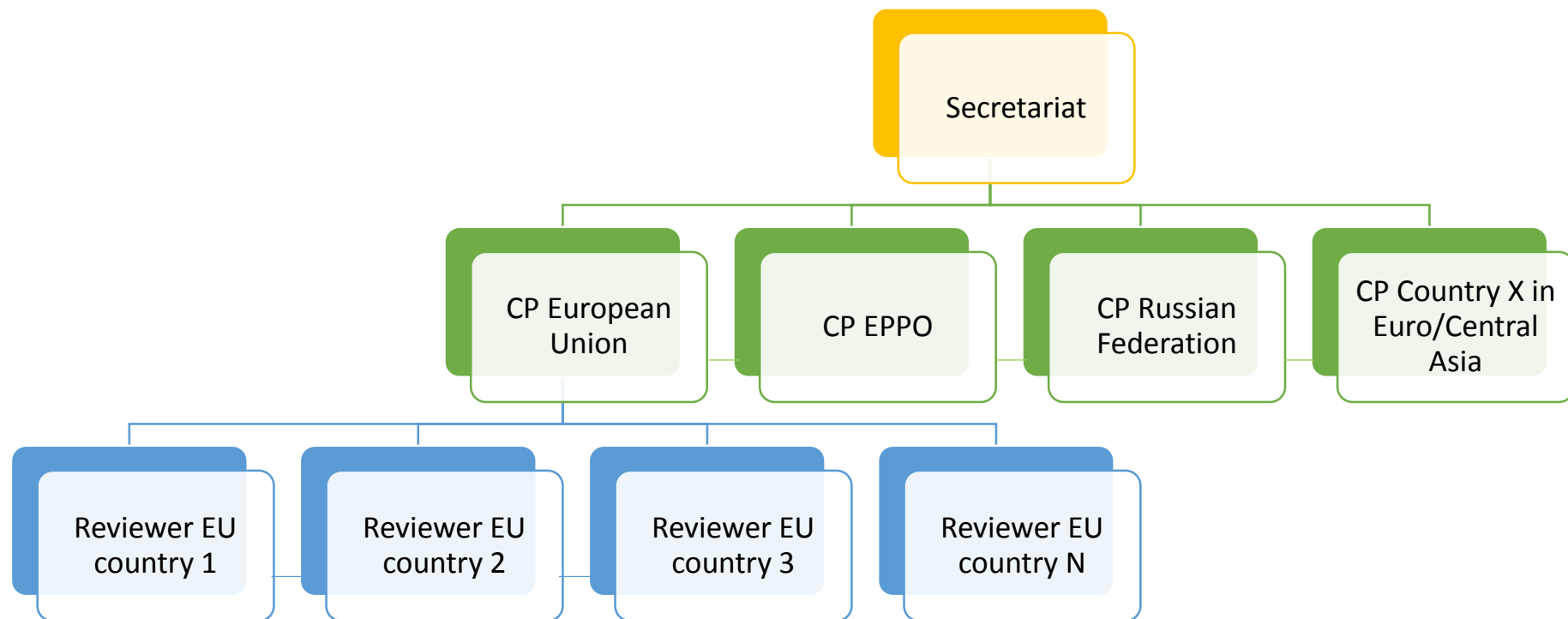


# External sharing: case 1



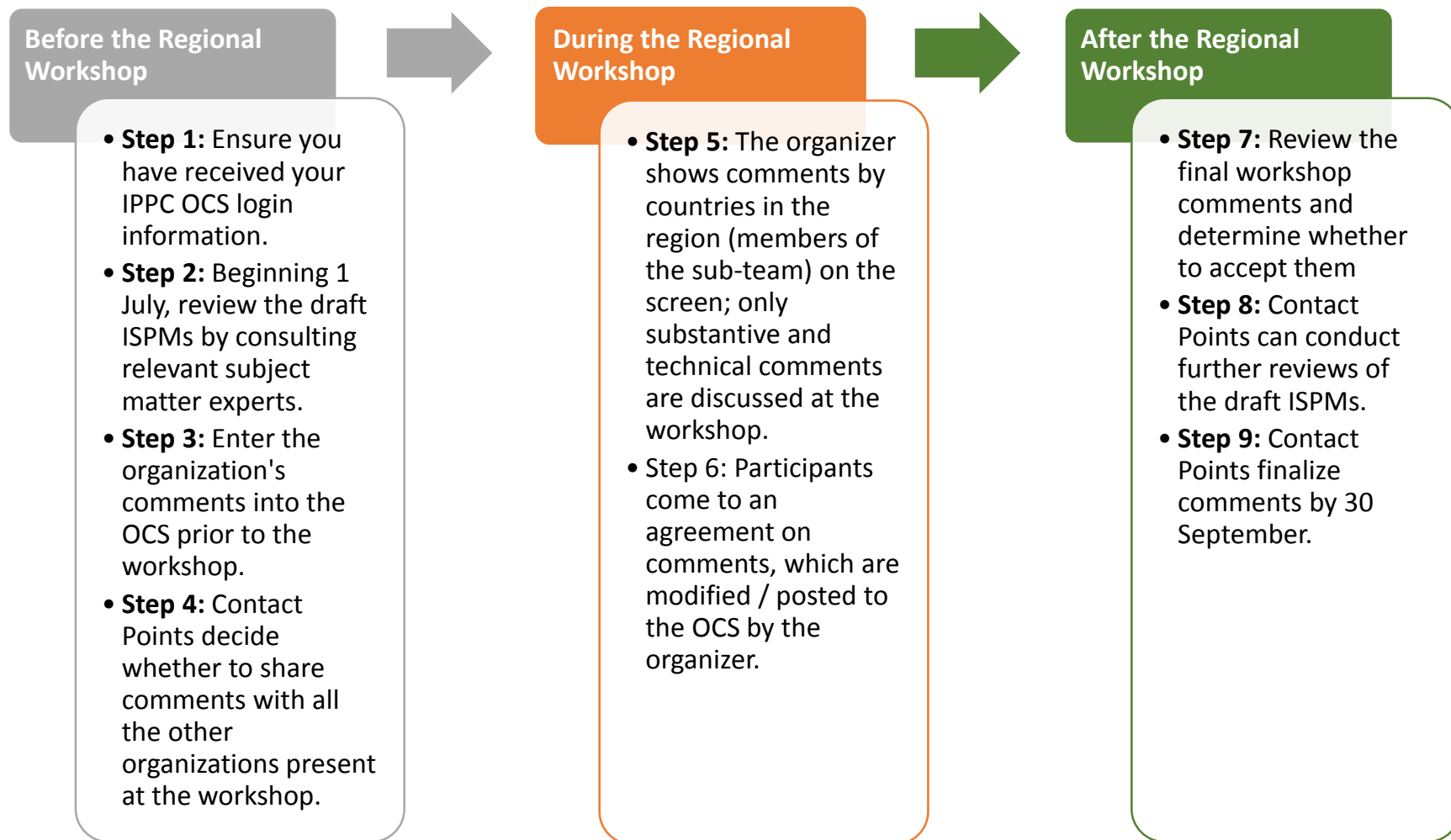


## External sharing: case 2





# The OCS and IPPC Regional Workshops



# Reports

T (Type) - B = Bullet, C = Comment, P = Proposed Change, R = Rating S (Status) - A = Accepted, C = Closed, O = Open, W = Withdrawn				
P		T	Comment	S
A				
		C	Category : EDITORIAL Attachment : U.S. Comments on Draft Codex Std for Thyme at step 6.OCS-SEPT2016.final.docx (35) USA (29 Sep 2016 5:04 PM) Attachment	O
	4	P	This Standard applies to dried leaves/ flowers of thyme ( <i>Thymus spp.</i> ) of the <i>Lamiaceae</i> family offered for industrial food production as a condiment and for direct human consumption or for repackaging if required. <del>It does not apply to the product when indicated as being intended for further processing. It does not apply to the product when indicated as being intended for further processing.</del>	O
	4	P	Category : EDITORIAL (39) Brazil (30 Sep 2016 9:49 PM) Correct writing of "spp." (remove italics) - The correct inscription of the species acronym "spp." precludes the use of italics. The adoption of italics for spp. in taxonomy is considered a mistake.	O
	4	C	Category : TECHNICAL (37) Chile (30 Sep 2016 5:26 PM) Regarding the sentence [It does not apply to the product when indicated as being intended for further processing.], the concept of "further processing" is not clear, neither its implications. Therefore, it would be useful to define this concept, in order to better determine the scope of this standard.	O
B	4	P	Category : TECHNICAL (36) India (30 Sep 2016 11:08 AM) 1. The word : "condiment" has a broader definition, while the scope of CCSOH is for "culinary herbs". 2. Since the standard is being developed for Codex, no specific wording like "human" is required. 3. The scope of the standard does not apply for the products when indicated as being intended for further processing, hence the statement is not appropriate	O
	4	C	Category : EDITORIAL (31) IOSTA (28 Sep 2016 8:23 PM) There is a difference of opinion with European Spice Association suggesting 0.5% for processed material is too high and	O

## DRAFT STANDARD FOR DRIED THYME

(at Step 6 of the Procedure)

This Standard applies to dried leaves/ flowers of thyme (*Thymus spp.*) of the *Lamiaceae* family offered for industrial food production as a condiment and for direct human consumption or for repackaging if required. ~~It does not apply to the product when indicated as being intended for further processing. It does not apply to the product when indicated as being intended for further processing.~~

### 2 DESCRIPTION

#### 2.1 Product Definition

Dried thyme is the product prepared from leaves/ flowers of *Thymus spp.* processed in an appropriate manner, undergoing operations such as cleaning, drying, rubbing, milling and sifting.

#### 2.2 Styles

Dried thyme leaves/ flowers may be offered in one of the following styles:

- Whole / intact.
- Crushed/rubbed: processed into varying degrees ranging from a coarse to fine crush.
- Ground/powdered: processed into powders.

#### 2.3 Varietal Types

All wild species and varieties or cultivars and hybrids belonging to the genus *Thymus*, which are suitable for processing.

### 3 ESSENTIAL COMPOSITION AND QUALITY FACTORS

#### 3.1 Composition

Product as defined in Section 2.

#### 3.2 Quality Factors

##### 3.2.1 Odour, flavour and colour

Dried thyme shall have a characteristic odour and flavour according to the chemical components of the volatile oil (such as thymol, carvacrol, and linalool), which can vary depending on geo-climatic factors/conditions. Dried thyme shall be free from any foreign odour or flavour and especially from mustiness. Dried thyme shall have a characteristic colour varying from green ash to brownish grey.

##### 3.2.2 Infestation

Dried thyme shall be free from live insects and practically free from insects, dead insects, insect fragments and rodent contamination visible to the naked eye (corrected, if necessary, for abnormal vision).

##### 3.2.3 Physical Characteristics

Dried thyme shall comply with the physical requirements specified in Table 1, excluding ground/powdered style.

**USA**  
General comment [35], by USA (29 Sep 2016 5:04 PM)  
Attachment : U.S. Comments on Draft Codex Std for Thyme at step 6.OCS-SEPT2016.final.docx  
Attachment

**Brazil**  
Proposed Change [39], by Brazil (30 Sep 2016 9:49 PM)  
Correct writing of "spp." (remove italics) - The correct inscription of the species acronym "spp." precludes the use of

**Chile**  
Comment [37], by Chile (30 Sep 2016 5:26 PM)  
Regarding the sentence [It does not apply to the product when indicated as being intended for further processing.], the concept of "further processing" is not clear, neither its

**IOSTA**  
Comment [31], by IOSTA (28 Sep 2016 8:23 PM)  
There is a difference of opinion with European Spice Association suggesting 0.5% for processed material is too

**IOSTA**  
Comment [40], by IOSTA (28 Sep 2016 8:20 PM)  
Thymus spp. is too broad. Two recommendations:  
1. *Thymus vulgaris* (as described in ISO 6754)

**Egypt**  
Comment [2], by Egypt (15 Aug 2016 12:48 PM)  
Keep the sentence [It does not apply to the product when indicated as being intended for further processing.]

**India**  
Proposed Change [36], by India (30 Sep 2016 11:08 AM)  
This Standard applies to dried leaves/ flowers of thyme (*Thymus spp.*) of the *Lamiaceae* family offered for industrial food production as a condiment-culinary herb and for direct human consumption or for repackaging

**Brazil**  
Proposed Change [38], by Brazil (30 Sep 2016 9:47 PM)  
Removal of square brackets - The rationale is Not to overrule trade of Thyme in bulk for further processing with provisions established for ready to eat products, we would like to

**Brazil**  
Proposed Change [40], by Brazil (30 Sep 2016 9:50 PM)  
Correct writing of "spp." (remove italics) - The correct inscription of the species acronym "spp." precludes the use of

**Brazil**  
Proposed Change [40], by Brazil (30 Sep 2016 9:50 PM)  
Correct writing of "spp." (remove italics) - The correct inscription of the species acronym "spp." precludes the use of



## Contacts and resources

- Contact: [IPPC-OCS@fao.org](mailto:IPPC-OCS@fao.org)
- OCS resource page, with multi-lingual user manual and videos: <https://www.ippc.int/en/online-comment-system/>
- Face-to-face presentations and demonstrations at Regional Workshops
- Webinars (group or one-on-one) as requested

