

The following themes will be presented  
and discussed during the workshop:

- \* Review of existing phytosanitary measures (including legislation, regulation and official procedures)
- \* Scientific and technical needs of National Plant Protection Organizations
- \* Delivery capacity of National Plant Protection Organizations (inspections, detection, pest-free areas, eradication, containment, etc.)
- \* **Information access and sharing**



ORGANISATION NORD AMERICAINE POUR LA PROTECTION DES PLANTES  
NORTH AMERICAN PLANT PROTECTION ORGANIZATION  
ORGANIZACION NORTEAMERICANA DE PROTECCION A LAS PLANTAS

CANADA UNITED STATES MEXICO

**and**

# **Exotic Pest Information**



**Dr Woody Bailey**

**USDA, APHIS, PPQ**

# NORTH AMERICA



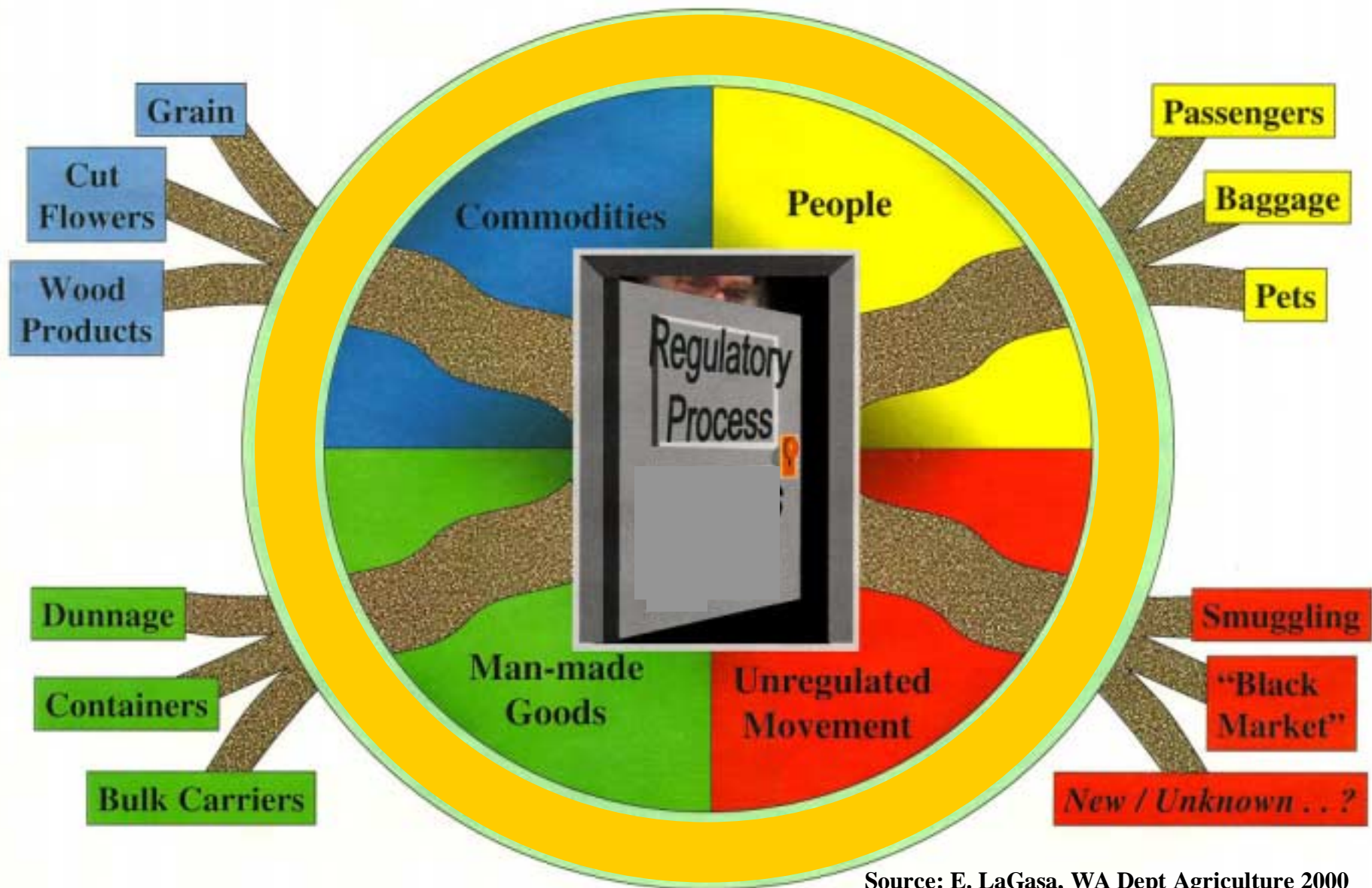
Map by Central Intelligence Agency, USA

# Operating Environment

- **Globalization**
- **Trade Agreements**
- **Increase in Trade Volume and Speed**
- **New Pathways/ Trading Patterns**
- **New Markets & Products**
- **Tourism**
- **Smuggling**
- **Pest Reporting Initiatives**



# The New **Pest** Hitchhikers Guide to North America



Source: E. LaGasa, WA Dept Agriculture 2000

# Risk from Trade

**Invasive species cost the U.S. more than \$138 billion each year (Cornell University, NY)**



**Witchweed**



**Citrus canker**



**Mediterranean fruit fly**

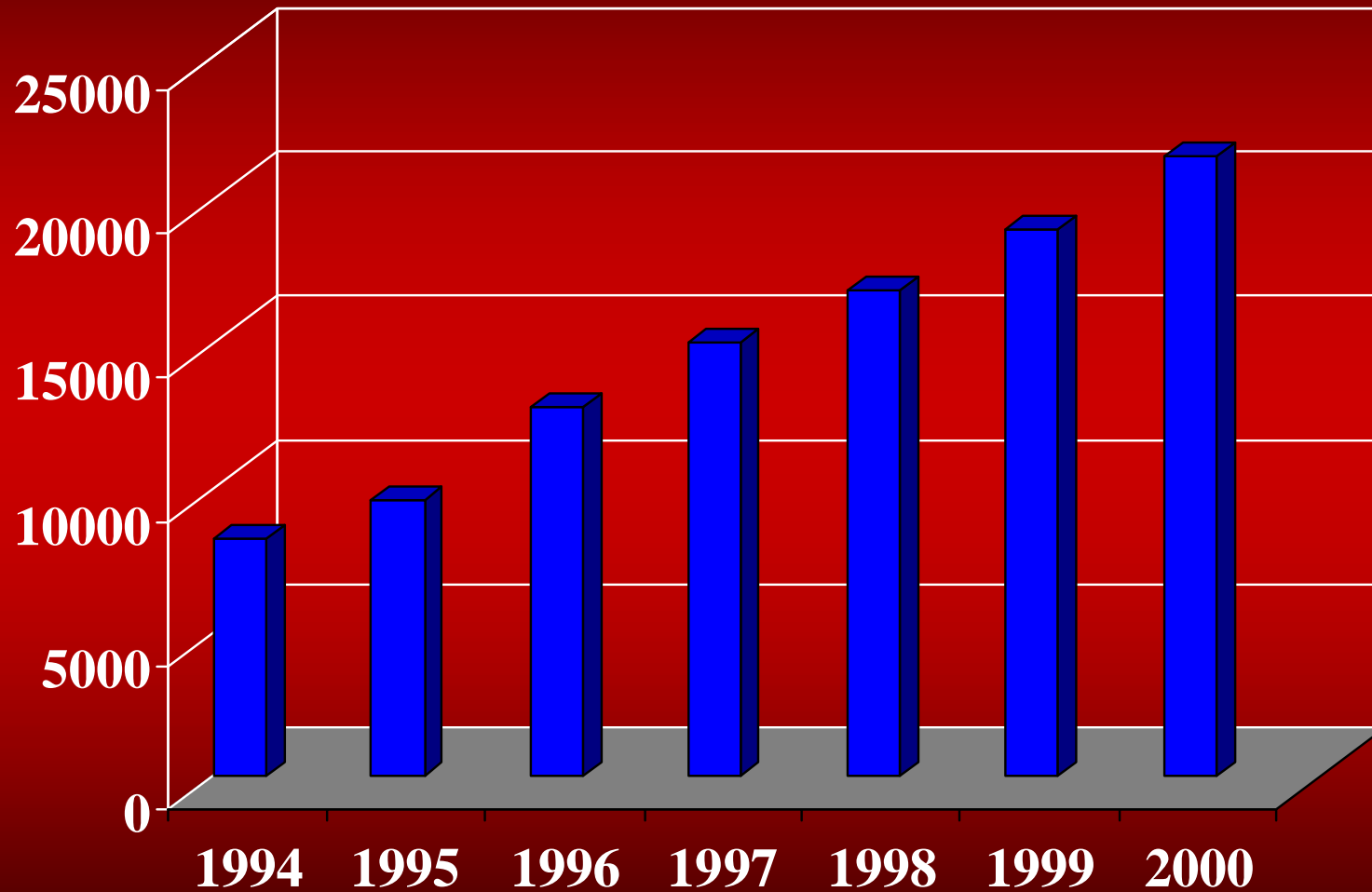


**Silverleaf whitefly**



**Plum pox**

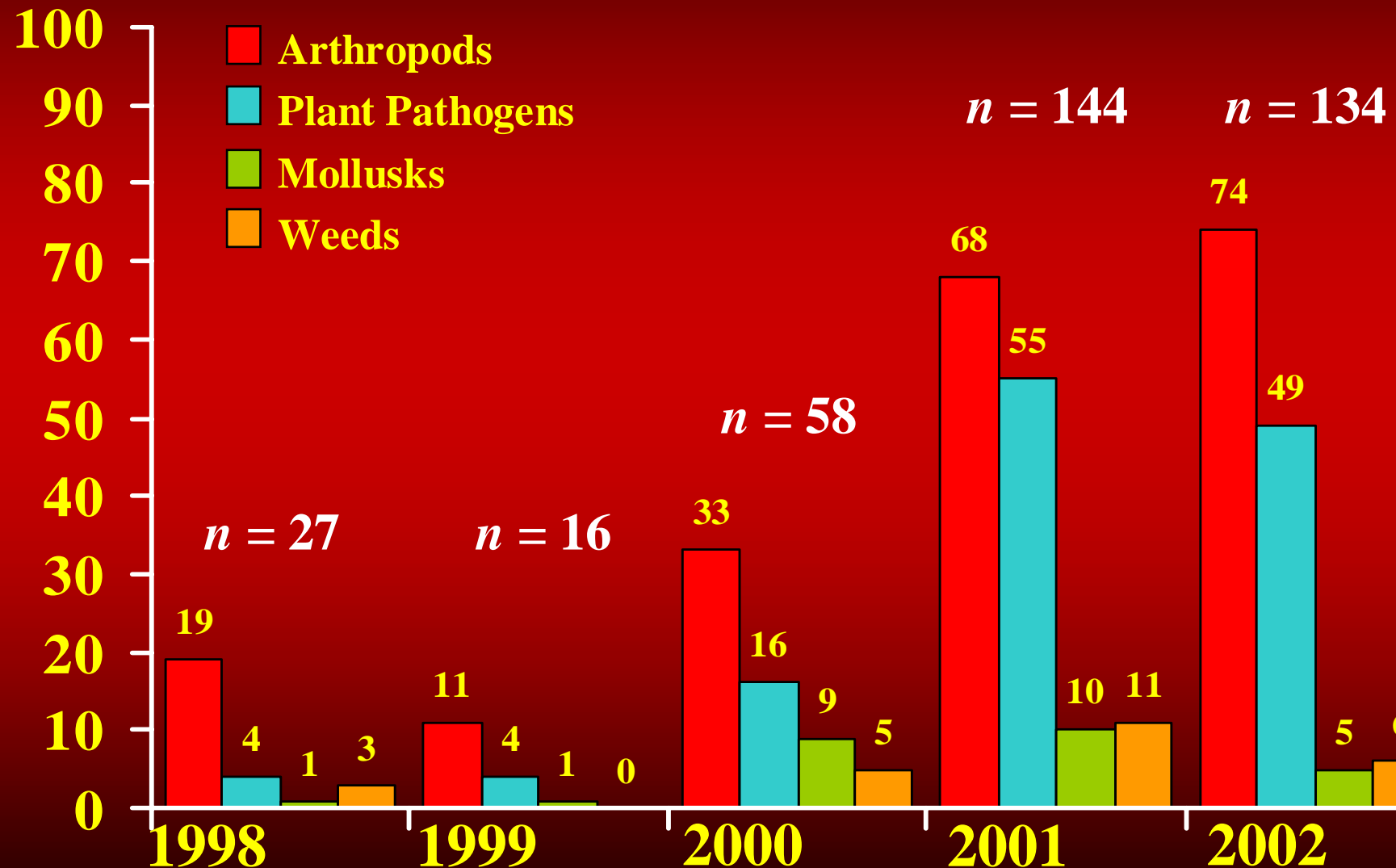
## Interceptions of Quarantine-Significant Pests at all Ports of Entry in Florida\*



\* **Source:** USDA-APHIS-PPQ, *after* Klassen, W., Brodel, C.F., and D.A. Fieselmann. Exotic Pests of Plants: Current and Future Threats to Horticultural Production and Trade in Florida and the Caribbean Basin. Micronesia, *in press*

# New Pest Advisory Group

## Pests Considered by Year



# **Invasive Species Introductions**

## **Some State Examples**

<b>Florida<sup>1</sup></b>	<b>150</b>	<b>arthropods (1986-2000)</b>
<b>Washington<sup>2</sup></b>	<b>26</b>	<b>arthropods/nematodes (1985-2000)</b>
<b>Hawaii<sup>3</sup></b>	<b>3559</b>	<b>arthropods (all through Nov. 2001)</b>
	<b>1589</b>	<b>other taxa (all through Nov. 2001)</b>
<b>California<sup>4</sup></b>	<b>208</b>	<b>arthropods (1955-1988)</b>

1 Florida Division of Plant Industry, The Exotic Invasion of Florida (<http://doacs.state.fl.us/~pi/enpp/ento/exoticsinflorida.htm>)

2 Washington Department of Agriculture

3 Hawaii Biological Survey Reports, Bishop Museum, Winter 2001 No.1(<http://hbs.bishopmuseum.org/pdf/HBS-Reports-no.1.pdf>)

4 Dowell, R.V. and R. Gill. 1989. Exotic Invertebrates and their Effects on California. Pan-Pacific Entomol. 65(2): 132-145



ORGANISATION NORD AMERICAINE POUR LA PROTECTION DES PLANTES  
NORTH AMERICAN PLANT PROTECTION ORGANIZATION  
ORGANIZACION NORTEAMERICANA DE PROTECCION A LAS PLANTAS  
CANADA UNITED STATES MEXICO

[Associated Web Sites](#)[Comments to NAPPO](#)[Diagnostic Tests](#)[Glossary of Plants](#) [Bilingual](#)[Meetings](#)[Newsletters](#) **Updated**[Official Documents](#)[People](#) **Updated**[Pest Alerts](#)[Publications](#)[Search this site](#)[Standards](#)[Workplans & Reports](#)

27th NAPPO Annual Meeting

October 20-24, 2003

For complete information please visit:

[www.aphis.usda.gov/ppq/nappo](http://www.aphis.usda.gov/ppq/nappo)


## MISSION

NAPPO, a Regional Plant Protection Organization of the International Plant Protection Convention, coordinates the efforts among Canada, the United States and Mexico to protect their plant resources from the entry, establishment and spread of regulated plant pests, while facilitating intra/interregional trade.

Officers-e - Netscape

File Edit View Go Bookmarks Tools Window Help

file:///A:/Officers-e.htm Search



ORGANISATION NORD AMERICAINE POUR LA PROTECTION DES PLANTES  
NORTH AMERICAN PLANT PROTECTION ORGANIZATION  
ORGANIZACION NORTEAMERICANA DE PROTECCION A LAS PLANTAS  
CANADA UNITED STATES MEXICO

<a href="#">NAPPO SECRETARIAT</a>	<a href="#">NAPPO OFFICERS AND PANELS</a>
<a href="#">EXECUTIVE COMMITTEE</a>	<a href="#">WORKING GROUP</a>

### PANELS

<a href="#">ACCREDITATION</a>	<a href="#">FRUIT</a>	<a href="#">PHYTOSANITARY ALERT SYSTEM</a>
<a href="#">ANNUAL MEETING</a> <b>NEW</b>	<a href="#">FRUIT TREE</a>	<a href="#">POTATO</a>
<a href="#">BIOLOGICAL CONTROL</a>	<a href="#">GRAINS</a>	<a href="#">PROPAGATIVE MATERIAL</a>
<a href="#">BIOTECHNOLOGY</a>	<a href="#">GRAPEVINE</a>	<a href="#">SEED</a>
<a href="#">CITRUS</a>	<a href="#">IN-TRANSIT</a>	<a href="#">STANDARDS</a>
<a href="#">FORESTRY</a>	<a href="#">PEST RISK ANALYSIS (PRA)</a>	<a href="#">INDUSTRY ADVISORY GROUP</a>

### NAPPO SECRETARIAT

Country	Name	Title	Telephone	Fax	E-mail
Canada	Ian McDonell	Executive Director	613-759-6132	613-759-6141	<a href="mailto:imcdonell@inspection.gc.ca">imcdonell@inspection.gc.ca</a>
Canada	Alba Campos	Executive Assistant	613-759-6179	613-759-6141	<a href="mailto:camposa@inspection.gc.ca">camposa@inspection.gc.ca</a>
Canada	Nedelka Marin-Martinez	Translator	613-759-6142	613-759-6141	<a href="mailto:nmarin@inspection.gc.ca">nmarin@inspection.gc.ca</a>
Canada	Patricia Delgado	Translator	613-759-6105	613-759-6141	<a href="mailto:delgadop@inspection.gc.ca">delgadop@inspection.gc.ca</a>

[Back to index](#)

Document: Done (0.852 secs)

# Pest Risk Analysis Panel



**NAPPO PRA Symposium, Puerto Vallarta Mexico, March 2002**

# Propagative Material Panel

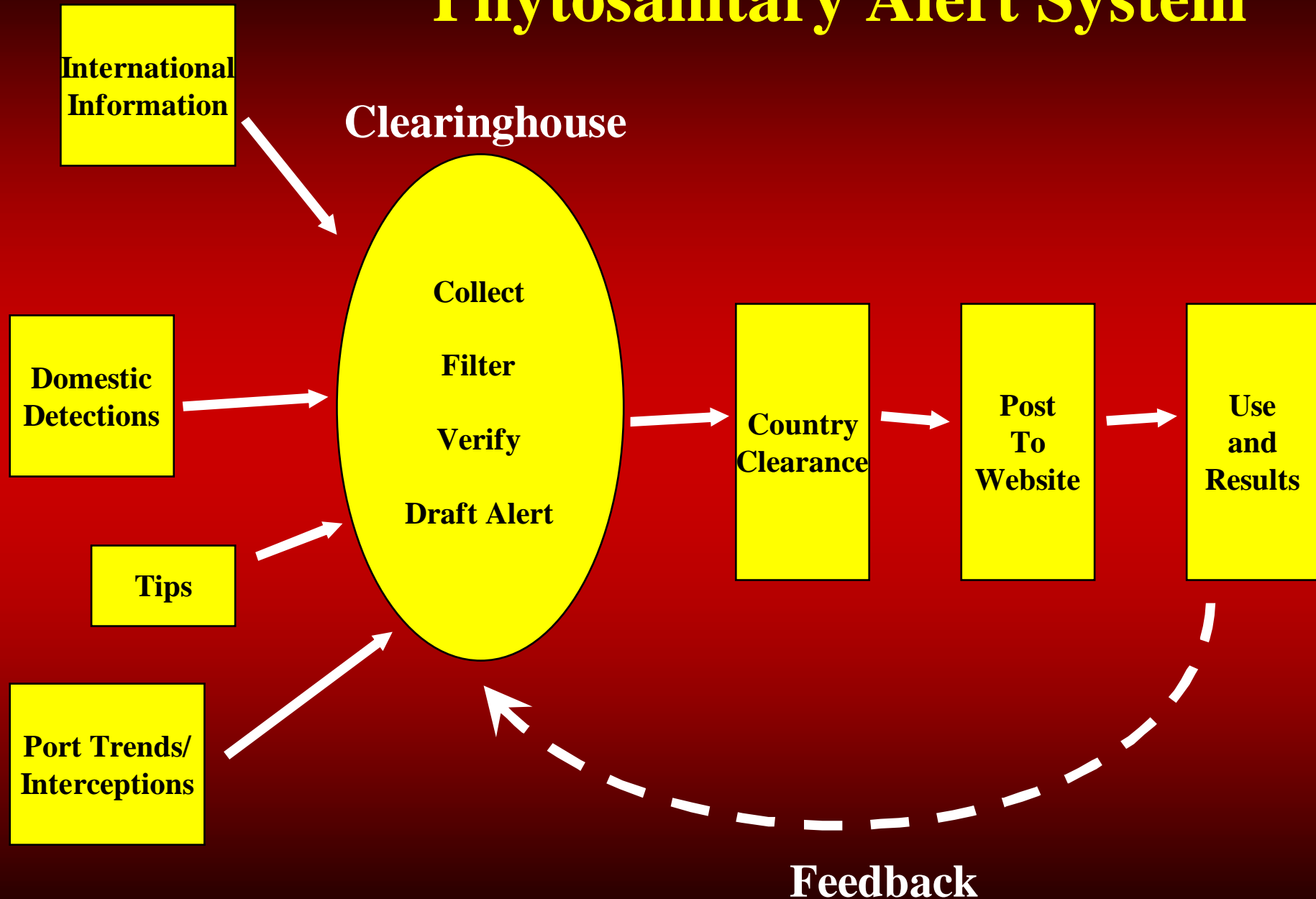


# Phytosanitary Alert System Panel



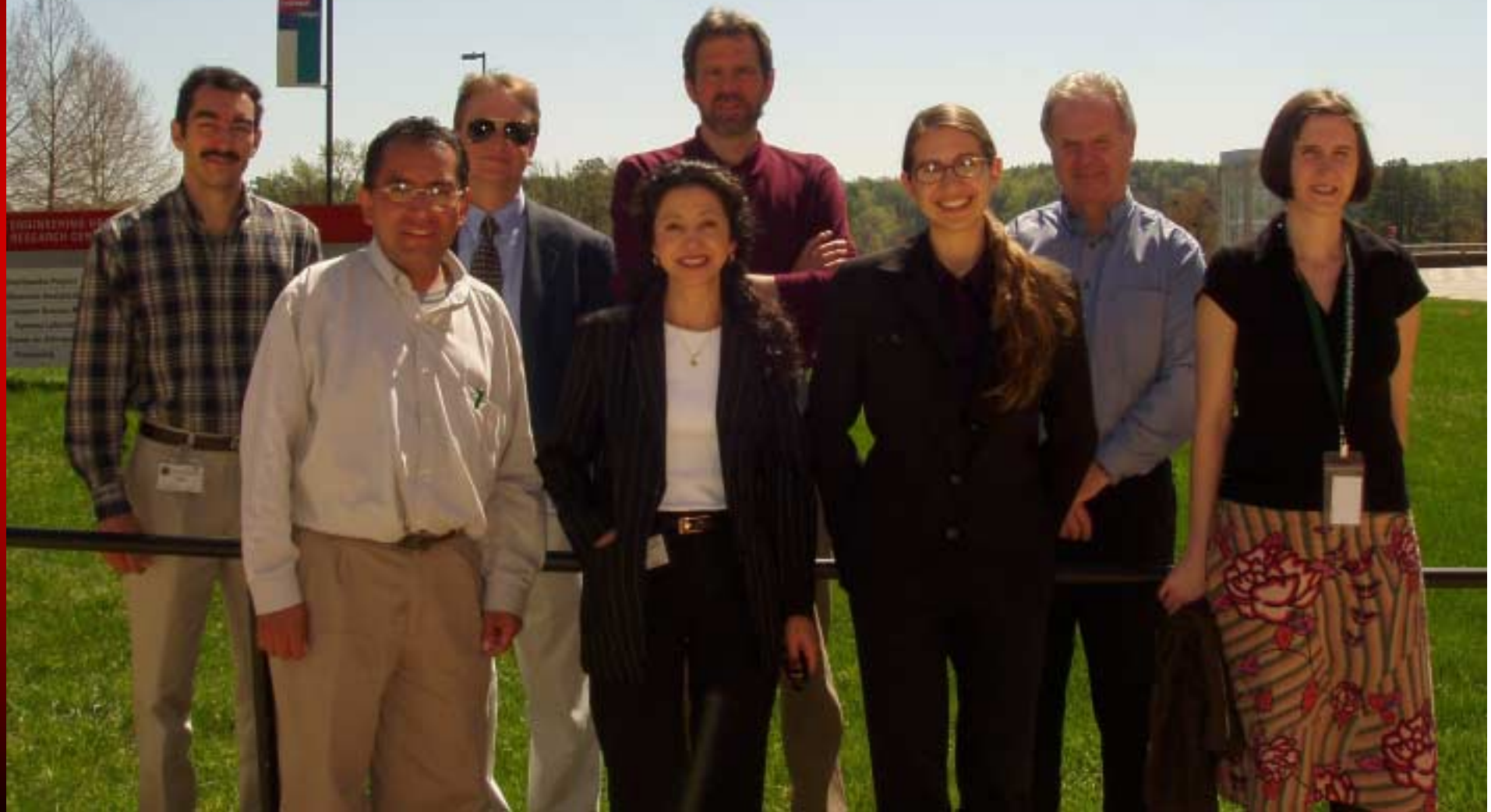
**Snowstorm of the Century: Raleigh, North Carolina January 2000**

# Phytosanitary Alert System



# NAPPO Phytosanitary Alert System Panel

## April 2003




# www.pestalert.org

NAPPO Phytosanitary Alert System - Netscape

File Edit View Go Bookmarks Tools Window Help

file:///A:/NAPPO%20Phytosanitary%20Alert%20System.htm

Search



## Phytosanitary Alert System

NAPPO

Alertas de plagas

Noticias sobre brotes de plagas

Quiénes somos

Subscribase


Recursos

Comentarios

Colaboradores

pestalert.org in English

58525 desde 00/00



wireless pestalert

**Aviso a los suscriptores del SAF:** si no recibe actualmente nuestras notificaciones por correo electrónico sobre nuevas plagas y brotes, [haga clic](#) aquí y envíenos un mensaje cuyo asunto sea "PAS emails". Gracias.

**Notificaciones Oficiales de Plagas**

México

**Reseñas sobre brotes** (reseñas sobre casos recientes de plagas)

recientes

**Alertas de plagas** (fichas técnicas de plagas exóticas de interés)

más recientes

**Búsqueda de alertas de plagas y de reseñas por palabra clave:**

**Suscripciones** para recibir notificaciones por correo electrónico sobre alertas de plagas y reseñas sobre brotes

**El Sistema de Alerta Fitosanitaria de la Organización Norteamericana de Protección a las Plantas (NAPPO)**

- proporciona alertas de plagas y noticias sobre plagas de plantas emergentes de importancia para Norteamérica
- tiene el propósito de facilitar la toma de conciencia sobre las plagas exóticas, su detección, prevención y manejo en Norteamérica
- para mayor información, visite ["Quiénes somos"](#)

**Director Ejecutivo de la NAPPO:**  
Ian McDonell

**Miembros del Panel de Sistema de Alerta Fitosanitaria de la NAPPO:**  
Woodward D. Bailey, Estados Unidos (Presidente)  
Heather M. Hartzog, Estados Unidos

Document: Done (0.461 secs)

Emerging Pests - Microsoft Internet Explorer

File Edit View Favorites Tools Help

Back Forward Stop Refresh Home

Address <http://www.pestalert.org/Detail.CFM?recordID=103> Go

## Cerambycidae larvae and Limacodidae pupa (Asian wood borers and slug caterpillar)

Canadian Pest Interceptions on Korean Bonsai Trees

### IDENTITY


**Name:** Cerambycidae larvae and Limacodidae pupa (Asian wood borers and slug caterpillar)

**Taxonomic Position:**  
Animalia : Arthropoda : Insecta:

**Significance:**  
On March 28, 2003 the Canadian Food Inspection Agency found severe insect damage on bonsai trees originating in Korea during a routine import inspection. The inspector found evidence of multiple quarantine-significant pests.

**Issues of Concern:** The movement of pests via bonsai plants is a recognized pathway for the introduction of exotic longhorned beetles. The affected host genera in this interception included *Acer*, *Carpinus* and *Juniperus*. The shipment also contained *Rhododendron* and *Ilex* species that appeared to be unaffected. On the *Acer* and *Carpinus* plants large tunnels and exit holes similar to those caused by *Anoplophora* spp. (Cerambycidae) were found. Some of the tunnels contained excelsior and in one case a larval head capsule was recovered. On the *Juniperus* plants, tunnels resembling those caused by *Callidiellum* were found. *Callidiellum rufipenne* (Cerambycidae) is an Asian wood borer frequently intercepted species in wood packaging and dunnage materials. On one of the plants a viable pupa belonging to the family Limacodidae (Lepidoptera) was collected. Larvae of the species in this family are commonly known as slug caterpillars due to their ornamentation. Some species have spines that can produce a painful sting. Limacodid larvae are foliage feeders on a wide variety of deciduous trees and shrubs. Most species

Click here for the enlargement of this photo or for additional images



Internet





Back



Forward



Stop



Refresh



Home



Go



# Phytosanitary Alert System

NAPPO

[Pest Alert Home](#)[News stories](#)[Who are we?](#)[Subscribe](#)[Resources](#)[Comments](#)[Collaborators  
Only](#)[pestalert.org en  
Español](#)**57619** since 06/00

## News Stories

### Recent news stories concerning pest outbreaks

Warning: The following pest reports have not yet been confirmed with the appropriate National Plant Protection Organization. They are provided solely as an early warning to NAPPO countries, and all National and Regional Plant Protection Organizations should use this information with caution.

### Subject : Causal agent and vector determined for Cucurbit yellow vine disease (CYVD)

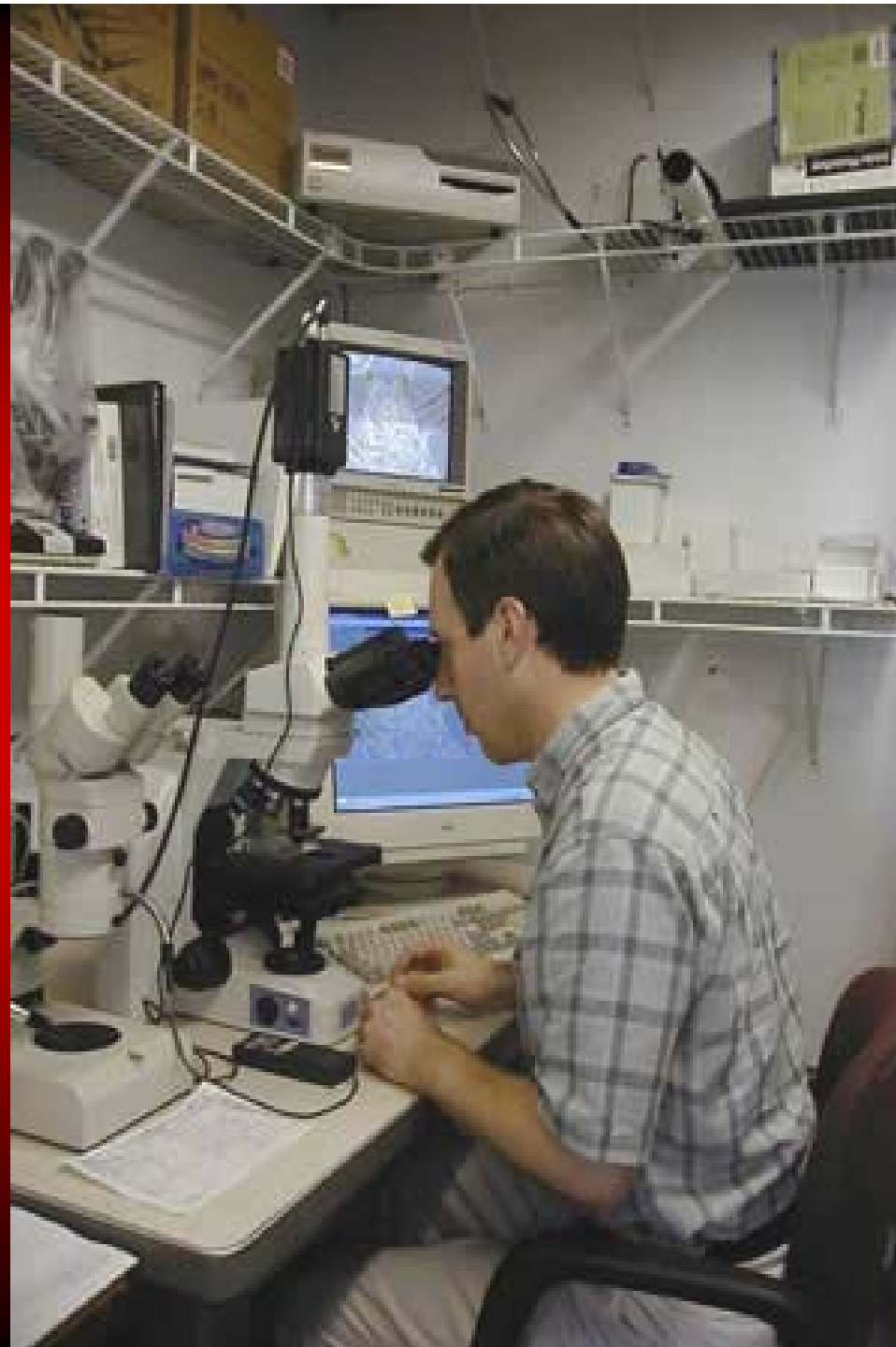
**Date posted:** 08/08/03

**Source :** Promed

**News :** Bacteria were cultured from the phloem of *Citrullus lanatas* (watermelon) and *Cucurbita pepo* (field pumpkin) plants displaying symptoms of Cucurbit yellow vine disease (CYVD). Bacteria that tested positive in a CYVD-specific polymerase chain reaction (PCR) were gram-negative, morphologically identical, and characterized as *Serratia marcescens*. Greenhouse and field grown squash plants were inoculated with *S. marcescens* by puncture inoculation and enclosure with *S. marcescens*-fed squash bugs (*Anasa tristis*) respectively. Sixty-percent of the greenhouse-grown and 17% of the field-grown plants developed symptoms of, and tested positive for, *S. marcescens*. This study confirms *S. marcescens* is the causal agent of CYVD and *A. tristis* is the vector.

Cucurbit yellow vine disease (CYVD) is found in production areas from the Midwestern to the Northeastern United States and can cause heavy losses to watermelon, pumpkin, cantaloupe, and squash. Symptoms of CYVD are phloem discoloration, foliar yellowing, wilting, and plant decline.

**Chuck Brodel**  
**PPQ Identifier**  
**Miami, FL**



# Selected PAS Resources

- **Pest Alerts:**
- North American Plant Protection Organization (NAPPO), Phytosanitary Alert System (PAS): <http://www.pestalert.org/>
- European Plant Protection organization (EPPO Pest Alerts): [http://www.eppo.org/QUARANTINE/Alert\\_List/alert\\_list.html](http://www.eppo.org/QUARANTINE/Alert_List/alert_list.html)
- Center for Invasive Plant Management: <http://www.weedcenter.org/warnings/warningshome.html>
- Agriculture Network Information Center (AGNIC), Plant Diseases Announcements: <http://www.agnic.org/pmp/>
- The Nature Conservancy (TNC) Invasives on the Web: <http://tncweeds.ucdavis.edu/index.html>
- British Society for Plant Pathology (BSPP) New Disease Reports: <http://www.bspp.org.uk/ndr/>
- National Plant Board (NPB) Plant Pest Issues: <http://www.aphis.usda.gov/npb/issues.html>
- Invasive Species Emerging Issues: <http://www.invasivespecies.gov/new/emerges.html>
- National Agricultural Pest Information System (NAPIS): <http://ceris.purdue.edu/napis/>
- Cooperative Agriculture Pest Survey program (CAPS) Pest Alerts: <http://ceris.purdue.edu/caps/pests/pest-alerts/index.html>
- University of Florida Pest Alert: <http://extlab7.entnem.ufl.edu/PestAlert/>
- Animal Plant Health Inspection Services (APHIS) Newsalert on Data02
- Pestnet: <http://www.pestnet.org/>
- **APHIS and Other Federal Sites:**
- USDA Press Releases: <http://www.aphis.usda.gov/ipa/news/press.html>
- Plant Protection and Quarantine (PPQ) New Pest Advisory Group (NPAG): <http://www.qphst.org/NPAG/>
- United States Fish and Wildlife Services: <http://www.fws.gov/>
- PPQ Intranet: <http://inside.aphis.usda.gov/ppq/>
- PPQ Pest Detection and Management Programs (PDMP): <http://www.aphis.usda.gov/ppq/emergencyprograms/>
- United States Geological Survey (USGS) Nonindigenous Aquatic Species (NAS): <http://nas.er.usgs.gov/>
- United States Department of Agriculture (USDA) Forest Service: <http://www.fs.fed.us/>
- USDA Identifiers Website: <http://inside.aphis.usda.gov/ppq/identifiers/INDEX.HTM>
- U.S. Department of State: <http://www.state.gov/>
- Smuggling Interdiction & Trade on Data02
- Landscape Management: <http://www.ncagr.com/plantind/plant/entomol/alert.htm>
- Treasure Valley Pest Alert Network: <http://www.tvpestalert.net/index.php3>
- **State Pest Resources:**
- Southeast Exotic Pest Plant Council: <http://www.se-eppc.org/>
- California Exotic Pest Plant Council: <http://www.caleppc.org/>
- California Department of Food and Agriculture (CDFA): <http://www.cdfa.ca.gov/phpps/pdep/>
- Florida Division of Plant Industry: <http://doacs.state.fl.us/~pi/>
- National Association of State Departments of Agriculture: <http://www.nasda-hq.org/>
- Florida Department of Agriculture and Consumer Services (FDOACS) <http://doacs.state.fl.us/>
- Florida Exotic Pest Plant Council: <http://www.fleppc.org/>
- Invasive Alien Plant Species of Virginia: <http://www.dcr.state.va.us/dnh/invproj.htm>
- California Agriculture Magazine: <http://danr.ucop.edu/calag/>
- Wisconsin Department of Agriculture, Trade, and Consumer Protection: <http://datcp.state.wi.us/>
- Texas Parks and Wildlife: <http://www.tpwd.state.tx.us/>
- Texas Department of Agriculture-Alerts: [http://www.agr.state.tx.us/producer\\_info/regulatory/reg\\_alerts.htm](http://www.agr.state.tx.us/producer_info/regulatory/reg_alerts.htm)
- Great Lakes Information Network: <http://www.great-lakes.net/>
- APHIS Raleigh Plant Protection Center: <http://www.invasivespecies.org/>
- Bureau of Land Management Weeds Website: <http://www.blm.gov/weeds/> (search by state)
- University of Nebraska-Crop Watch: <http://cropwatch.unl.edu/>
- NCDA: <http://www.ncagr.com/plantind/plant/entomol/alert.htm>
- Horticultural Inspection Society, Southern Chapter: <http://www.kornet.org/hissouth/>
- **International Pest Resources:**
- Queensland Government: <http://www.nrmi.qld.gov.au/>
- Department of Agriculture- Western Australia: <http://www.agric.wa.gov.au/>
- Secretariat of the Pacific Community Plant Protection Service: <http://www.spc.org.nc/pps/>
- International Association for the Plant Protection Sciences: <http://plantprotection.org/>
- Ministry of Agriculture and Forestry, New Zealand: <http://www.maf.govt.nz/MAFnet/index.htm>
- The Exotic Pest Information System of North America: <http://www.exoticforestpests.org/>
- Australian Quarantine and Inspection Service: <http://www.affa.gov.au/content/output.cfm?ObjectID=3E48F86-AA1A-11A1-B6300060B0AA00014>
- CSIRO Entomology: <http://www.ento.csiro.au/publicity/pressrel/pressrel.html>
- The World Conservation Union Invasive Species Specialist Group: <http://www.issg.org/#ISSG>
- Canadian Forest Service: [http://www.nrcan-mcan.gc.ca/cfs-scf/index\\_e.html](http://www.nrcan-mcan.gc.ca/cfs-scf/index_e.html)
- Israel Journal of Plant Protection Sciences: <http://www.phytoparasitica.org>
- **Arthropods:**
- University of Florida Woodybug: <http://woodypest.ifas.ufl.edu/>
- University of Florida and FDOACS Featured Creatures: <http://creatures.ifas.ufl.edu/>
- Florida Entomologist: <http://www.fcla.edu/FlaEnt/>
- Entomological Society of America: <http://www.entsoc.org>
- HYPP Zoology (HYPPZ) Home Page: <http://www.inra.fr/Internet/Produits/HYPPZ/pests.htm>
- North American Non-indigenous Arthropod Database (NANIAD): <http://www.invasivespecies.org/NANIAD.html>
- Iowa State University Entomology Index of Internet Resources: <http://www.ent.iastate.edu/list/>
- Hosts: <http://www.nhm.ac.uk/entomology/hostplants/>
- Nomina Insecta Nearctica: <http://www.nearctica.com/nomina/main.htm>
- ScaleNet: <http://www.sel.barc.usda.gov/scalenet/scalenet.htm>
- Lepidopteran Web Links: <http://www.furman.edu/~snyder/snyder/lep/lepintern.htm>
- Coleoptera: <http://www.coleoptera.org>
- Cerambycidae: <http://www.uochb.cas.cz/~natur/cerambyx/cerambyx.htm>
- Tephritidae (Fruit Flies): <http://www.sel.barc.usda.gov/Diptera/tephriti/tephriti.htm>
- **Molluscs:**
- Michigan State University Snail Laboratory: <http://www.msu.edu/~msusnail/>
- Molluscan Pictures: <http://www.molluscan.com/>
- Giant African Land Snail Website: <http://www.geocities.com/Heartland/Valley/6210/>
- American Malacological Society: <http://erato.acnatsci.org/ams/>
- **Nematodes:**
- Society of Nematologists: <http://www.janr.unl.edu/son/>
- University of Nebraska-Lincoln- Nematodes of Quarantinable Concern: <http://nematode.unl.edu/nemaquar/nemaquar.htm>
- Accueil Laboratory of Nematology: <http://www.rennes.inra.fr/zoologie/sources/equipements/nemato/Presentation.html>
- USDA Nematology Lab Home Page: <http://www.barc.usda.gov/psi/nem/home-page.html>
- Insect Parasitic Nematodes: <http://www2.oardc.ohio-state.edu/nematodes/>
- **Plants and Weeds:**
- Center for Invasive Plant Management (CIPM): <http://www.weedcenter.org/index.html>
- Plant Protection and Quarantine (PPQ) Federal Noxious Weed Program: <http://www.aphis.usda.gov/ppq/weeds/nwpolicy2001.html>
- Agriculture Research Service (ARS) Exotic and Invasive Weeds Research Unit: <http://www.nps.gov/plants/alien/list/a.htm>
- Plants Database: <http://plants.usda.gov/index.html>
- Weed Science Society of America: <http://www.wssa.net/>
- University of Minnesota Plant Information Online: <http://plantinfo.umn.edu/arboretum/default.asp> (password required)
- Plant Conservation Alliance's (PCA) Alien Plant Working Group (APWG) Alien Plant Invaders of Natural Areas: <http://www.nps.gov/plants/alien/list/a.htm>
- Invaders Database System: <http://invader.dbs.umt.edu/>
- Invasive Plants of Canada Project: <http://www.plantsincanada.com/>
- Weeds Gone Wild: <http://www.nps.gov/plants/alien/>
- Weed Science List of Web Resources: <http://www.agric.wa.gov.au/PROGSRV/PLANTS/WEEDS/links.htm#weed sites>

# Selected PAS Resources (cont.)

Department of Agriculture - Western Australia weed science:  
<http://www.agric.wa.gov.au/PROGSERV/PLANTS/WEEDS/index.htm>

## **Plant Pathology:**

The American Phytopathological Society (APS): Plant Pathology/Disease Online: <http://www.apsnet.org/>  
University of California Cooperative Extension (UCCE) in Marin County Sudden Oak Death: <http://cemarin.ucdavis.edu/index2.html>  
University of Arizona Virus Families and Genera: <http://ag.arizona.edu/~z-xiong/plp611/taxonomy.html>  
Berkley *Xylella fastidiosa* Web Site: <http://www.cnr.berkeley.edu/xyella/index.html>  
All the Virology on the WWW: <http://www.tulane.edu/~dmsander/garryfavweb.html>  
University of Idaho Plant Viruses Online: <http://image.fs.uidaho.edu/videl/>  
Institute for Plant Diseases Plant Pathology Internet Guide Book: <http://www.pk.uni-bonn.de/ppigb/ppigb.htm>

## **Aquatic Plants:**

Aquatic Plants: <http://www.amazonian-fish.co.uk/indexc6b1.html>  
Center for Aquatic and Invasive Plants: <http://plants.ifas.ufl.edu/>

## **Crops/Agriculture/IPM:**

Radcliffe's IPM World Textbook: <http://ipmworld.umn.edu/>  
Soybean Disease Atlas: <http://ipmwww.ncsu.edu/SSDW/soy/atlas.htm>  
CropLife America: <http://www.croplifeamerica.org/>  
Cost816 Biological Control of Weeds in Europe: <http://www.unifr.ch/plantbio/cost816/>  
The National Agricultural Library: <http://www.nal.usda.gov/>  
Agricultural Research Service (ARS): <http://www.ars.usda.gov/>  
Database of IPM Resources (DIR): <http://www.ippe.orst.edu/cicp/gateway/weed.htm>

ARS Magazine: (<http://www.ars.usda.gov/fs/AR/>)  
The National Center for Food and Agricultural Policy (NCFAP): <http://pestdata.ncsu.edu/ncfap/search.cfm>  
USDA Economic Research Service (ERS)-State Fact Sheets: <http://www.ers.usda.gov/statefacts/>  
NewCROP Homepage: <http://newcrop.hort.purdue.edu/newcrop/default.html>  
National Agricultural Statistics Service: <http://www.usda.gov/nass/>  
Food and Agriculture Organization of the United Nations: <http://apps.fao.org/>  
Fundecitrus- Fund for Citrus Plant Protection: <http://www.fundecitrus.com.br/indiceus.html>  
USDA HomePage: <http://www.usda.gov/news/pubs/fbook98/content.htm>  
Center for Integrated Pest Management (CIPM): <http://ipmwww.ncsu.edu/cipm/>  
Tropical Fruit Index: <http://www.proscitech.com.au/trop/link.htm>

## **Taxonomy and Systematics:**

Systematic Botany and Mycology Laboratory: <http://nt.ars-grin.gov/>  
Systematic Entomology Laboratory: <http://www.sel.barc.usda.gov/selhome/selhome.htm>  
USDA-ARS Germplasm Resources Information Network (GRIN): <http://www.ars-grin.gov/npgs/tax/>

## **Gardens and Herbaria:**

The New York Botanical Garden Vascular Plant Types Database: <http://www.nybg.org/bsci/hcol/vasc/>  
North Carolina Botanical Garden: <http://www.ncbg.unc.edu/>  
North Carolina State University (NCSSU) Department of Botany Herbarium: <http://www.cals.ncsu.edu/botany/ncsc/>  
The Biota of North America Program of the North Carolina Botanical Garden: <http://www.bonap.org/>  
Missouri Botanical Garden: <http://www.mobot.org/>

## **Risk Analysis:**

Risk World: <http://www.riskworld.com>  
USDA PRAs: <http://www.aphis.usda.gov/ppq/pra/>

## **Administration:**

Electronic Code of Federal Regulations: <http://www.access.gpo.gov/ecfr/>  
USDA/APHIS/PPQ Manuals Unit: <http://inside.aphis.usda.gov/ppq/manuals/>

## **Translations:**

Martindale's Reference Desk- Language and Translation Center: <http://www.sci.lib.uci.edu/HSG/Language.html#TRANS-T>  
Free Translation Web Site: <http://www.freetranslation.com/>  
AltaVista's Babel Fish Translation: <http://babelfish.altavista.com/>

## **Search Engines:**

All Search Engines: <http://www.allsearchengines.com>  
Google: <http://www.google.com>  
KartOO: <http://www.kartoo.com/>

## **Literature Searches:**

Agricola: <http://www.nal.usda.gov/ag98/>  
PubMed: <http://www.ncbi.nlm.nih.gov/entrez/query.fcgi>  
Science Direct: <http://www.sciencedirect.com/>  
Scirus: <http://www.scirus.com/>

Entomological Journals on the Web: [http://www.medbioworld.com/cgi-bin/displaycontents.cgi?table=bio&type=journals&filecode=\(B\)%20Insect](http://www.medbioworld.com/cgi-bin/displaycontents.cgi?table=bio&type=journals&filecode=(B)%20Insect)  
E-journals.org: <http://www.e-journals.org/>

Electronic Journal Miner: <http://ejournal.coalliance.org>

## **Other Sources of General Information (sources for background information):**

International Survey of Herbicide Resistant Weeds: <http://www.weedscience.org/in.asp>  
CAB International (CABI) Bioscience: <http://www.cabi-bioscience.org/>  
Pest CABWeb: <http://pest.cabweb.org/index.htm>

Ecoport: <http://www.ecoport.org/>

## **Historically Useful Sites That Have Not Been Updated:**

Weeds Australia National Weeds Strategy: <http://www.weeds.org.au/>  
The South Cone Plant Protection Committee (COSAVE): <http://www.cosave.org.py/baseing.htm>

## **Risk Analysis:**

Risk World: <http://www.riskworld.com>  
USDA PRAs: <http://www.aphis.usda.gov/ppq/pra/>

## **Administration:**

Electronic Code of Federal Regulations: <http://www.access.gpo.gov/ecfr/>  
USDA/APHIS/PPQ Manuals Unit: <http://inside.aphis.usda.gov/ppq/manuals/>

## **Translations:**

Martindale's Reference Desk- Language and Translation Center: <http://www.sci.lib.uci.edu/HSG/Language.html#TRANS-T>

Free Translation Web Site: <http://www.freetranslation.com/>

AltaVista's Babel Fish Translation: <http://babelfish.altavista.com/>

## **Search Engines:**

All Search Engines: <http://www.allsearchengines.com>  
Google: <http://www.google.com>  
KartOO: <http://www.kartoo.com/>

## **Literature Searches:**

Agricola: <http://www.nal.usda.gov/ag98/>  
PubMed: <http://www.ncbi.nlm.nih.gov/entrez/query.fcgi>  
Science Direct: <http://www.sciencedirect.com/>  
Scirus: <http://www.scirus.com/>

Entomological Journals on the Web: [http://www.medbioworld.com/cgi-bin/displaycontents.cgi?table=bio&type=journals&filecode=\(B\)%20Insect](http://www.medbioworld.com/cgi-bin/displaycontents.cgi?table=bio&type=journals&filecode=(B)%20Insect)  
E-journals.org: <http://www.e-journals.org/>

Electronic Journal Miner: <http://ejournal.coalliance.org>

## **Other Sources of General Information (sources for background information):**

International Survey of Herbicide Resistant Weeds: <http://www.weedscience.org/in.asp>  
CAB International (CABI) Bioscience: <http://www.cabi-bioscience.org/>  
Pest CABWeb: <http://pest.cabweb.org/index.htm>

Ecoport: <http://www.ecoport.org/>

## **Historically Useful Sites That Have Not Been Updated:**

Weeds Australia National Weeds Strategy: <http://www.weeds.org.au/>  
The South Cone Plant Protection Committee (COSAVE): <http://www.cosave.org.py/baseing.htm>

# Selected Exotic Pest Resources

- **Pest Alerts**
- North American Plant Protection Organization (NAPPO), Phytosanitary Alert System (PAS)<http://www.pestalert.org/>
- European Plant Protection organization (EPPO Pest Alerts): [http://www.eppo.org/QUARANTINE/Alert\\_List/alert\\_list.html](http://www.eppo.org/QUARANTINE/Alert_List/alert_list.html)
- Center for Invasive Plant Management<http://www.weedcenter.org/warnings/warningshome.html>
- Agriculture Network Information Center (AGNIC), Plant Diseases Announcements<http://www.agnic.org/pmp/>
- The Nature Conservancy (TNC) Invasives on the Web<http://tncweeds.ucdavis.edu/index.html>
- British Society for Plant Pathology (BSPP) New Disease Reports<http://www.bspp.org.uk/ndr/>
- National Plant Board (NPB) Plant Pest Issues<http://www.aphis.usda.gov/npb/issues.html>
- Invasive Species Emerging Issues<http://www.invasivespecies.gov/new/emerge.shtml>
- National Agricultural Pest Information System (NAPIS)<http://ceris.purdue.edu/napis/>
- Cooperative Agriculture Pest Survey program (CAPS) Pest Alerts<http://ceris.purdue.edu/caps/pests/pest-alerts/index.html>
- University of Florida Pest Alert<http://extlab7.entnem.ufl.edu/PestAlert/>
- European and Mediterranean Plant Protection Organization: <http://www.eppo.org/index.html>
- Animal Plant Health Inspection Services (APHIS) Newsalert on Data02Pestnet<http://www.pestnet.org/>
- **APHIS and Other Federal Sites:**
- New Pest Advisory Group (NPAG)<http://www.cphst.org/NPAG/>
- United States Fish and Wildlife Services<http://www.fws.gov/>
- PPQ Intranet<http://inside.aphis.usda.gov/ppq/>
- PPQ Plant Protection and Management Programs (PDMP)<http://www.aphis.usda.gov/ppq/emergencyprograms/>
- United States Geological Survey (USGS) Nonindigenous Aquatic Species (NAS) <http://nas.er.usgs.gov/>
- United States Department of Agriculture (USDA) Forest Service<http://www.fs.fed.us/>
- USDA Identifiers Website: <http://inside.aphis.usda.gov/ppq/identifiers/INDEX.HTM>
- U.S. Department of State<http://www.state.gov/>
- Smuggling Interdiction & Trade on Data02
- **State Pest Resources:**
- Southeast Exotic Pest Plant Council<http://www.se-eppc.org/>
- California Exotic Pest Plant Council<http://www.caleppc.org/>
- California Department of Food and Agriculture (CDFA)[http://www.cdfa.ca.gov/phpps/pdep/Florida Division of Plant Industryhttp://doacs.state.fl.us/~pi/](http://www.cdfa.ca.gov/phpps/pdep/Florida%20Division%20of%20Plant%20Industryhttp://doacs.state.fl.us/~pi/)
- National Association of State Departments of Agriculture<http://www.nasda-hq.org/>
- Florida Department of Agriculture and Consumer Services (FDOACS) <http://doacs.state.fl.us/>
- Florida Exotic Pest Plant Council<http://www.fleppc.org/>
- Invasive Alien Plant Species of Virginia<http://www.dcr.state.va.us/dnh/invproj.htm>
- California Agriculture Magazine<http://danr.ucop.edu/calag/>
- Wisconsin Department of Agriculture, Trade, and Consumer Protection<http://datcp.state.wi.us/>
- Texas Parks and Wildlife<http://www.tpwd.state.tx.us/>
- Texas Department of Agriculture-Alerts:[http://www.agr.state.tx.us/producer\\_info/regulatory/reg\\_alerts.htm](http://www.agr.state.tx.us/producer_info/regulatory/reg_alerts.htm)
- Great Lakes Information Network<http://www.great-lakes.net/>
- APHIS Raleigh Plant Protection Center: <http://www.invasivespecies.org/>
- APHIS Regulated Pest List (PPQ website) <http://www.aphis.usda.gov/ppq/regpestlist/>
- Bureau of Land Management Weeds Website: <http://www.blm.gov/weeds/> (search by state)

# Selected Exotic Pest Resources

- **International Pest Resources:**
- Queensland Government <http://www.nrm.qld.gov.au/>
- Department of Agriculture- Western Australia <http://www.agric.wa.gov.au/>
- Secretariat of the Pacific Community Plant Protection Service <http://www.spc.org.nc/pps/>
- International Association for the Plant Protection Sciences <http://plantprotection.org/>
- Ministry of Agriculture and Forestry, New Zealand <http://www.maf.govt.nz/MAFnet/index.htm>
- The Exotic Pest Information System of North America <http://www.exoticforestpests.org/>
- Australian Quarantine and Inspection Service <http://www.affa.gov.au/content/output.cfm?ObjectID=3E48F86-AA1A-11A1-B6300060B0AA00014>
- The World Conservation Union Invasive Species Specialist Group <http://www.issg.org/#ISSG>
- Canadian Forest Service [http://www.nrcan-rncan.gc.ca/cfs-scf/index\\_e.html](http://www.nrcan-rncan.gc.ca/cfs-scf/index_e.html)
- CFIA Plant Pest Information <http://www.inspection.gc.ca/english/ppc/science/pps/pfse.shtml>
- Invasive Plants of Canada Project <http://24.43.24.85/nbs/ipcan/>
- Israel Journal of Plant Protection Sciences <http://www.phytoparasitica.org>
- **Arthropods:**
- University of Florida Woodybug <http://woodypest.ifas.ufl.edu/>
- Entomological Society of America <http://www.entsoc.org>
- Florida Entomologist <http://www.fcla.edu/FlaEnt/>
- University of Florida and FDOACS Featured Creatures <http://creatures.ifas.ufl.edu/>
- HYPP Zoology (HYPPZ) Home Page <http://www.inra.fr/Internet/Produits/HYPPZ/pests.htm>
- North American Non-indigenous Arthropod Database (NANIAD) <http://www.invasivespecies.org/NANIAD.html>
- Iowa State University Entomology Index of Internet Resources <http://www.ent.iastate.edu/list/>
- Hosts <http://www.nhm.ac.uk/entomology/hostplants/>
- Nomina Insecta Nearctica <http://www.nearctica.com/nomina/main.htm>
- ScaleNeth <http://www.sel.barc.usda.gov/scalenet/scalenet.htm>
- Lepidopteran Web Links <http://www.furman.edu/~snyder/snyder/lep/intern.htm>
- Coleoptera <http://www.coleoptera.org>
- Cerambycidae <http://www.uochb.cas.cz/~natur/cerambyx/cerambyx.htm>
- Tephritidae (Fruit Flies) <http://www.sel.barc.usda.gov/Diptera/tephriti/tephriti.htm>
- Bugwood Network <http://www.bugwood.caes.uga.edu/entomology.html>
- **Mollusks:**
- Michigan State University Snail Laboratory <http://www.msu.edu/~msusnail/>
- Molluscan Pictures <http://www.molluscan.com/>
- Giant African Land Snail Website <http://www.geocities.com/Heartland/Valley/6210/>
- American Malacological Society <http://erato.acnatsci.org/ams/>
- **Nematodes:** Society of Nematologists <http://www.ianr.unl.edu/son/>
- University of Nebraska-Lincoln- Nematodes of Quarantinable Concern <http://nematode.unl.edu/nemaquar/nemaquar.htm>
- Accueil Laboratory of Nematology <http://www.rennes.inra.fr/zoologie/sources/equipements/nemato/Presentation.html>
- USDA Nematology Lab Home Page <http://www.barc.usda.gov/psi/nem/home-pg.html>
- Insect Parasitic Nematodes <http://www2.oardc.ohio-state.edu/nematodes/>

# Selected Exotic Pest Resources

- **Plants and Weeds:**
- Center for Invasive Plant Management (CIPM) <http://www.weedcenter.org/index.html>
- Plant Protection and Quarantine (PPQ) Federal Noxious Weed Program <http://www.aphis.usda.gov/ppq/weeds/nwpolicy2001.html>
- Agriculture Research Service (ARS) Exotic and Invasive Weeds Research Unit <http://www.nps.gov/plants/alien/list/a.htm>
- Plants Database <http://plants.usda.gov/index.html>
- Weed Science Society of America <http://www.wssa.net/>
- University of Minnesota Plant Information Online <http://plantinfo.umn.edu/arboretum/default.asp> (password required)
- Plant Conservation Alliance's (PCA) Alien Plant Working Group (APWG) Alien Plant Invaders of Natural Areas <http://www.nps.gov/plants/alien/list/a.htm>
- Invaders Database System <http://invader.dbs.umt.edu/>
- Invasive Plants of Canada Project <http://www.plantsincanada.com/>
- Weeds Gone Wild <http://www.nps.gov/plants/alien/>
- Weed Science List of Web Resources [http://www.agric.wa.gov.au/PROGSERV/PLANTS/WEEDS/links.htm#weed\\_sites](http://www.agric.wa.gov.au/PROGSERV/PLANTS/WEEDS/links.htm#weed_sites)
- APHIS Federal Noxious Weed List <http://www.aphis.usda.gov/ppq/permits/fnwsbycat-e.PDF>
- HEAR, a Global Compendium of Weeds and the Hawaii/Pacific Islands Ecosystems at Risk Websites <http://www.hear.org/gcw/>; <http://www.hear.org/index.html>; <http://www.hear.org/pier/index.html>
- Atlas of Florida Vascular Plants online Database <http://www.plantatlas.usf.edu>
- **Plant Pathology:**
- The American Phytopathological Society (APS): Plant Pathology/Disease Online <http://www.apsnet.org/>
- University of California Cooperative Extension (UCCE) in Marin County Sudden Oak Death <http://cemarin.ucdavis.edu/index2.html>
- University of Arizona Virus Families and Genera <http://ag.arizona.edu/~zxiong/plp611/taxonomy.html>
- Berkley *Xylella fastidiosa* Web Site <http://www.cnr.berkeley.edu/xylella/index.html>
- All the Virology on the WWW <http://www.tulane.edu/~dmsander/garryfavweb.html>
- University of Idaho Plant Viruses Online <http://image.fs.uidaho.edu/vide/>
- Institute for Plant Diseases Plant Pathology Internet Guide Book <http://www.pk.uni-bonn.de/ppigb/ppigb.htm>
- **Aquatic Plants:**
- Aquatic Plants <http://www.amazonian-fish.co.uk/indexc6b1.html>
- Center for Aquatic and Invasive Plants: <http://plants.ifas.ufl.edu/>
- **Crops/Agriculture/IPM:**
- Radcliffe's IPM World Textbook <http://ipmworld.umn.edu/>
- Soybean Disease Atlas <http://ipmwww.ncsu.edu/SSDW/soyatlans.htm>
- Croplife America <http://www.croplifeamerica.org/>
- Cost816 Biological Control of Weeds in Europe <http://www.unifr.ch/plantbio/cost816/>
- The National Agricultural Library <http://www.nal.usda.gov/>
- Agricultural Research Service (ARS) <http://www.ars.usda.gov/>
- Database of IPM Resources (DIR) <http://www.ippc.orst.edu/cicp/gateway/weed.htm>
- ARS Magazine (<http://www.ars.usda.gov/is/AR>) <http://pestdata.ncsu.edu/ncfap/search.cfm>
- The National Center for Food and Agricultural Policy (NCFAP) <http://pestdata.ncsu.edu/ncfap/search.cfm>
- USDA Economic Research Service (ERS)-State Fact Sheets <http://www.ers.usda.gov/statefacts/>
- NewCROP Homepage <http://newcrop.hort.purdue.edu/newcrop/default.html>
- National Agricultural Statistics Service <http://www.usda.gov/nass/>

# Selected Exotic Pest Resources

- Food and Agriculture Organization of the United Nations <http://apps.fao.org/>
- Fundecitrus- Fund for Citrus Plant Protection <http://www.fundecitrus.com.br/>
- USDA HomePage: <http://www.usda.gov/news/pubs/fbook98/content.htm>
- Center for Integrated Pest Management (CIPM) <http://ipmwww.ncsu.edu/cipm/>
- Tropical Fruit Index <http://www.proscitech.com.au/trop/link.htm>
- **Taxonomy and Systematics:**
- Systematic Botany and Mycology Laboratory <http://nt.ars-grin.gov/>
- Systematic Entomology Laboratory <http://www.sel.barc.usda.gov/selhome/selhome.htm>
- USDA-ARS Germplasm Resources Information Network (GRIN) <http://www.ars-grin.gov/npgs/tax/>
- **Gardens and Herbaria:**
- The New York Botanical Garden Vascular Plant Types Database <http://www.nybg.org/bsci/hcol/vasc/>
- North Carolina Botanical Garden <http://www.ncbg.unc.edu/>
- North Carolina State University (NCSS) Department of Botany Herbarium <http://www.cals.ncsu.edu/botany/ncsc/>
- The Biota of North America Program of the North Carolina Botanical Garden <http://www.bonap.org/>
- Missouri Botanical Garden <http://www.mobot.org/>
- **Risk Analysis:**
- Risk World <http://www.riskworld.com>
- USDA PRAs <http://www.aphis.usda.gov/ppq/pra/>
- **Administration:**
- Electronic Code of Federal Regulations <http://www.access.gpo.gov/ecfr/>
- USDA/APHIS/PPQ Manuals Unit <http://inside.aphis.usda.gov/ppq/manuals/>
- **Translations:**
- Martindale's Reference Desk- Language and Translation Center <http://www-sci.lib.uci.edu/HSG/Language.html#TRANS-T>
- Free Translation Web Site <http://www.freetranslation.com/>
- Alta Vista's Babel Fish Translation <http://babelfish.altavista.com/>
- **Search Engines:**
- All Search Engines <http://www.allsearchengines.com>
- Google <http://www.google.com>
- KartOO <http://www.kartoo.com/>
- **Literature Searches:**
- Agricola <http://www.nal.usda.gov/ag98/>
- PubMed <http://www.ncbi.nlm.nih.gov/entrez/query.fcgi>
- Science Direct <http://www.sciencedirect.com/>
- Scirus <http://www.scirus.com/>
- Entomological Journals on the Web [http://www.medbioworld.com/cgi-bin/displaycontents.cgi?table=bio&type=Journals&filecode=\(B\)%20Insect](http://www.medbioworld.com/cgi-bin/displaycontents.cgi?table=bio&type=Journals&filecode=(B)%20Insect)
- E-journals.org <http://www.e-journals.org/>
- Electronic Journal Miner <http://ejournal.coalliance.org>
- **Other Sources of General Information (sources for background information):**
- International Survey of Herbicide Resistant Weeds <http://www.weedscience.org/in.asp>
- CAB International (CABI) Bioscience <http://www.cabi-bioscience.org/>
- Pest CAB Web <http://pest.cabweb.org/index.htm>
- Ecoport <http://www.ecoport.org/>
- CABI Crop Protection Compendium <http://www.cabi.org/compendia/cpc/index.htm>



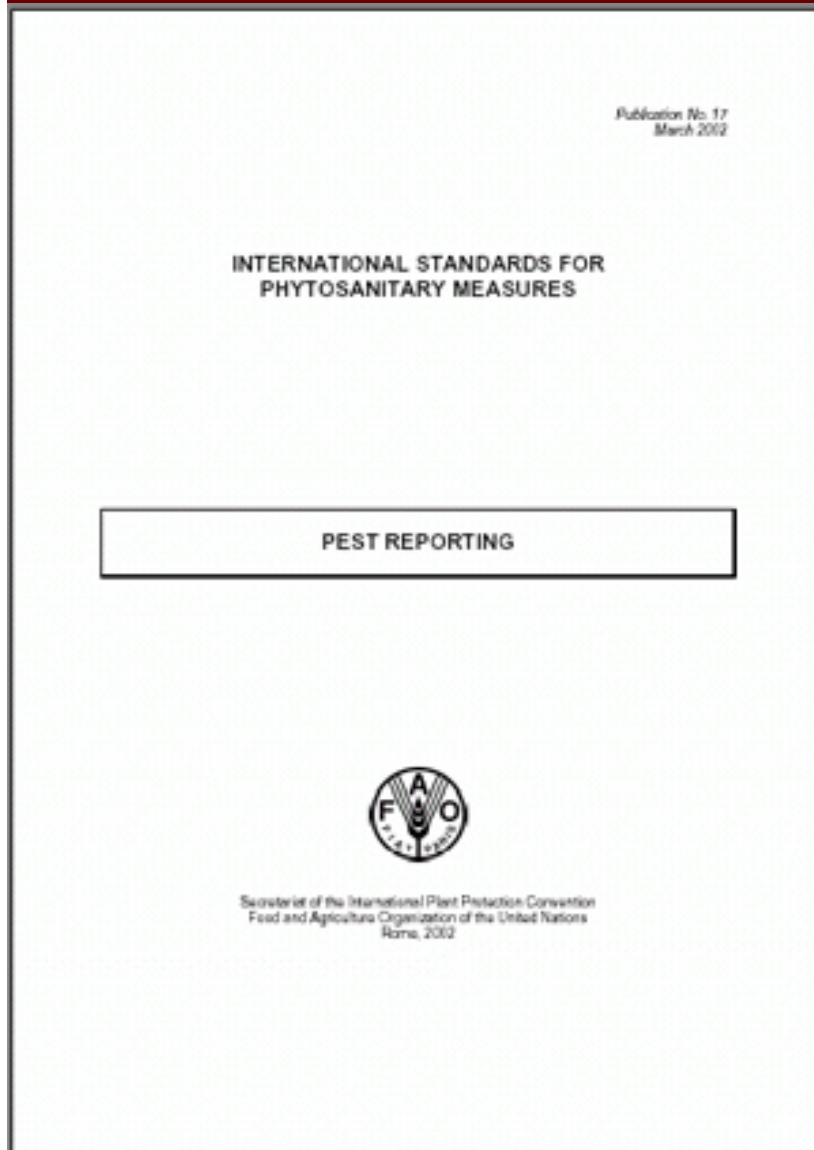
# FAST Data Search in the Agricultural Internet Monitoring System

Presenter: USDA APHIS NCSU

Forum: August 22, 2003



# Pest Reporting: ISPM No. 17



- Adopted March 2002
- Pests of immediate or potential danger
- Occurrence, outbreak, spread
- Pest status
- Not for routine pest management data

# Scope

- **Pests of immediate or potential danger**
- **Occurrence, outbreak, spread**
- **Pest status**
- **Not for routine pest management data**

# Pest Reporting Involves:

**Surveillance (ISPM 6)**

**Pest Status (ISPM 8)**

**Pest Risk Analysis (ISPM 2, 11)**

**Pest Free Areas (ISPM 4)**

**Pest Eradication (ISPM 9)**

# **Working Group on Pest Reporting**

**Sept. 5-8, 2000**      **Ljubljana**

**Robert Griffin (IPPC)**

**John Hedley (ICPM)**

**Ian Smith (EPPO)**

**Daniel Fieselmann (USA)**

**Datarina Groznik (Slovenia)**

**Jens Unger (Germany)**

**Mohammed Rahe (Morocco)**

**Marcos Beeche (Chile)**

**Dong-pil Lee (Korea)**

# Pest Reporting: NAPPO Decision Sheet



## NAPPO Executive Committee Decision Sheet

### Issue:

Compliance by North American Plant Protection Organization (NAPPO) countries (Canada, the United States and Mexico) with International Plant Protection Convention (IPPC, 1997) pest reporting obligations.

### Background:

The IPPC requires countries to report on the occurrence, outbreak, and spread of pests with the purpose of communicating immediate or potential danger. These obligations form the basis of International Standard for Phytosanitary Measures (ISPM) No. 17, *Pest reporting*. National Plant Protection Organizations (NPPOs) have the responsibility to collect pest information by surveillance and to verify the pest records thus collected. Occurrence, outbreak or spread of pests that are known to be of immediate or potential danger should be reported to neighboring countries and trading partners.

As signatories to the IPPC, each NAPPO country has agreed to its obligations. Compliance with these obligations will be achieved through the direct posting of Official Pest Reports, or links to Official Pest Reports that are hosted on the country's own website, on the NAPPO Phytosanitary Alert System website ([www.pestalert.org](http://www.pestalert.org)). Each NAPPO country will be responsible for establishing its own internal approval procedure for preparing Official Pest Reports. To facilitate posting, the NAPPO Pest Alert web site provides each country with secure access for posting new Pest Reports and editing or deleting existing Pest Reports, and a system for notifying individual official IPPC contact points, as determined by the reporting country, of newly posted reports. NAPPO countries may adopt their own procedure for notifying individual NPPOs of new pest reports posted on the Phytosanitary Alert System website.

### Decision:

NAPPO countries agree to use the Phytosanitary Alert System website as a mechanism of compliance with IPPC pest reporting obligations.

### Original Signed by:

Robert Carberry  
Executive Committee Member  
CANADA

Richard Dunfee  
Executive Committee Member  
UNITED STATES

Jorge Hernandez Tacua  
Executive Committee Member  
MEXICO

August 10, 2003  
Tacoma, WA, U.S.

➤ Adopted August 2003

➤ Phytosanitary Alert System is the Repository

➤ Each NPPO Responsible for Their Own Internal Clearance Mechanism



Back



Forward



Stop



Refresh



Home



# Phytosanitary Alert System

NAPPO

[Pest Alert Home](#)[News stories](#)[Who are we?](#)[Subscribe](#)[Resources](#)[Comments](#)[Collaborators  
Only](#)[pestalert.org en  
Español](#)**57619** since 06/00wireless  
pestalert

## Official Pest Reports : **United States**

Official Pest Reports are provided by National Plant Protection Organizations within the NAPPO region. These Pest Reports are intended to comply with the International Plant Protection Convention's [Standard on Pest Reporting](#), endorsed by the Interim Commission on Phytosanitary Measures in March 2002.

### Detection of *Scolytus schevyrewi* Semenov in Colorado and Utah - 07/15/2003

On May 13, 2003, the Agricultural Research Service, Systematic Entomology Lab confirmed that specimens of *Scolytus schevyrewi* Semenov (*S. schevyrewi*), an exotic scolytid previously unknown in the United States, had been collected in Colorado and Utah. Between April 1 and May 9, 2003, *S. schevyrewi* was collected near two Colorado solid wood packing material recyclers (3 specimens from one site and 67 from another) at the Denver Zoo (two specimens) and from sites in Ogden, Logan, Clearfield, and Smithfield, Utah (13 specimens). Since early May, the APHIS/Forest Service Rapid Detection and Response Pilot Project team in coordination with State officials continue to discover *S. schevyrewi* in Colorado and Utah. To date, this species has not been reported from other States.

Hosts of *S. schevyrewi* include *Elaeagnus* spp. (Russian olive), *Salix* spp. (willow), *Ulmus* spp. (elm), *Caragana* spp. (peashrub), and *Prunus* spp. Research from Asia indicates that *S. schevyrewi* does not colonize and breed successfully in healthy elms; the beetle attacks trees that have been weakened and predisposed to attack by drought, severe defoliation or pathogen invasion. *Scolytus schevyrewi* may produce several generations per year. The potential for *S. schevyrewi* to vector exotic pathogens is currently unknown and is a possible concern. The known distribution of *S. schevyrewi* outside the United States is Russia and Mongolia and central, northwestern, northern, northeastern and eastern China and Korea.

# www.pestalert.org

NAPPO Phytosanitary Alert System - Microsoft Internet Explorer

File Edit View Favorites Tools Help Back Forward Stop Refresh Home Address <http://www.pestalert.org> Go

## Phytosanitary Alert System NAPPO

**Pest Alert Home**

News stories

Who are we?

Subscribe


Resources

Comments

Collaborators Only

[pestalert.org en Español](#)

**57614** since 06/00

 wireless pestalert

**Notice to PAS Subscribers:** If you are not receiving email notifications about new pest alerts and new stories please [click here](#) and send us an email with the subject heading of "PAS emails". Thank you.

**Official Pest Reports**

---

**Pest News Stories** (short news stories about recent pest developments)

---

**Pest Alerts** (datasheets for exotic pests of concern)

---

**Search pest alerts and news by a keyword:**

**Subscriptions** to Pest Alerts and Pest News subscribe for e-mail notification of new pest alerts and news stories!

---

The **North American Plant Protection Organization's (NAPPO)** Phytosanitary Alert System

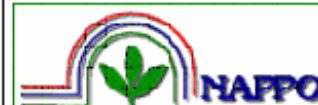
- provides pest alerts and news of emerging plant pests of significance to North America
- is intended to facilitate awareness, detection, prevention and management of exotic species in North America
- for more information, see "[Who Are We?](#)"

**NAPPO Executive Director:**  
Ian McDonell

**NAPPO Phytosanitary Alert System Panel Members:**  
Woodward D. Bailey, U.S.A.  
(Chairperson)  
Gloria Barrera, Mexico

Internet

## Pest Risk Assessments and Related Documents



ORGANISATION NORD AMERICAINE POUR LA PROTECTION DES PLANTES  
NORTH AMERICAN PLANT PROTECTION ORGANIZATION  
ORGANIZACION NORTEAMERICANA DE PROTECCION A LAS PLANTAS  
CANADA UNITED STATES MEXICO

These documents are provided as a courtesy by phytosanitary agencies within the country listed. NAPPO does not assume responsibility for their contents.

   [Canada](#)  [Mexico](#)      [United States](#)

-- click on the country to view content --

 [Manage Documents](#) for your region: **Mexico**

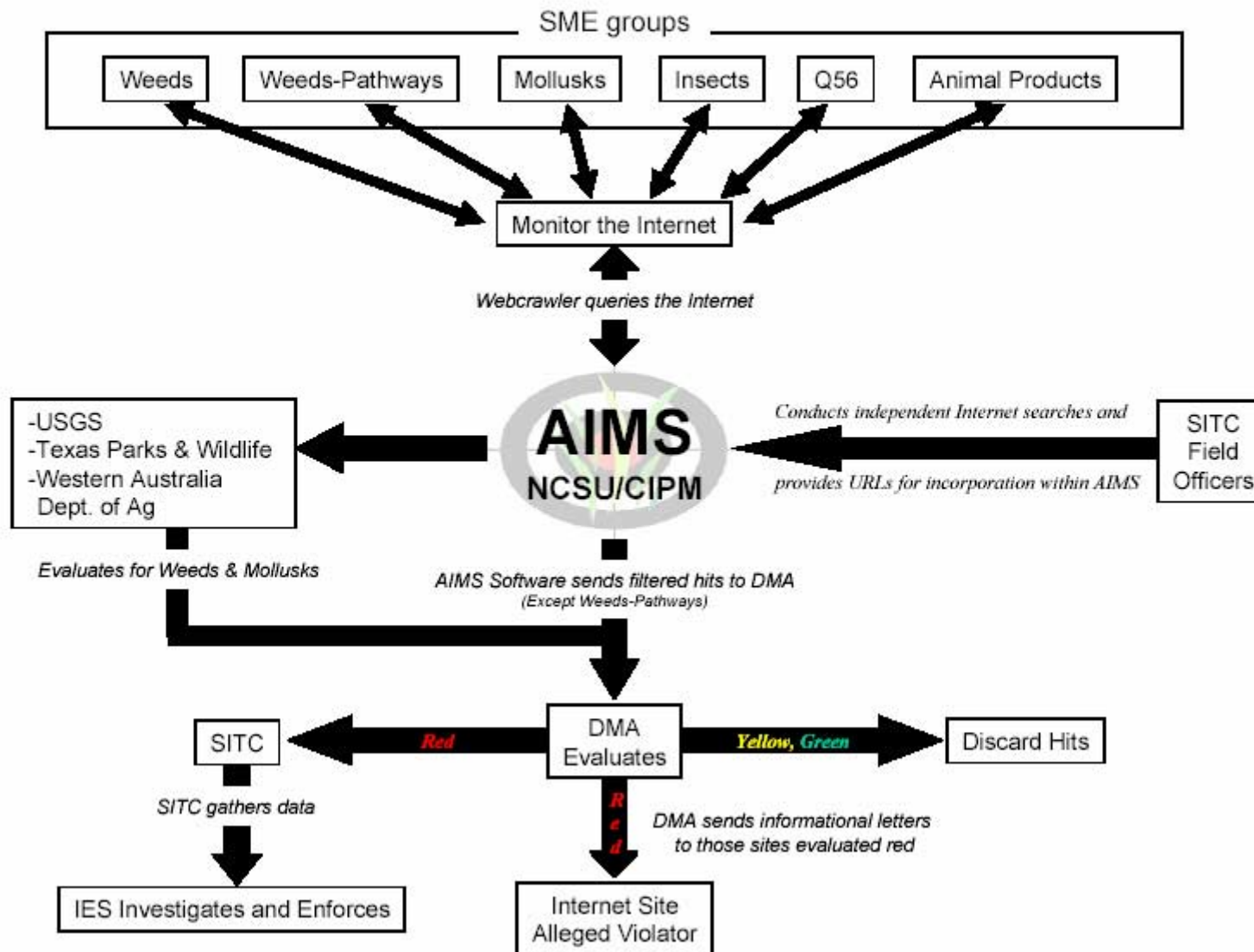
 [Submit questions](#)

[Change login name](#)

 **Questions from viewers:**

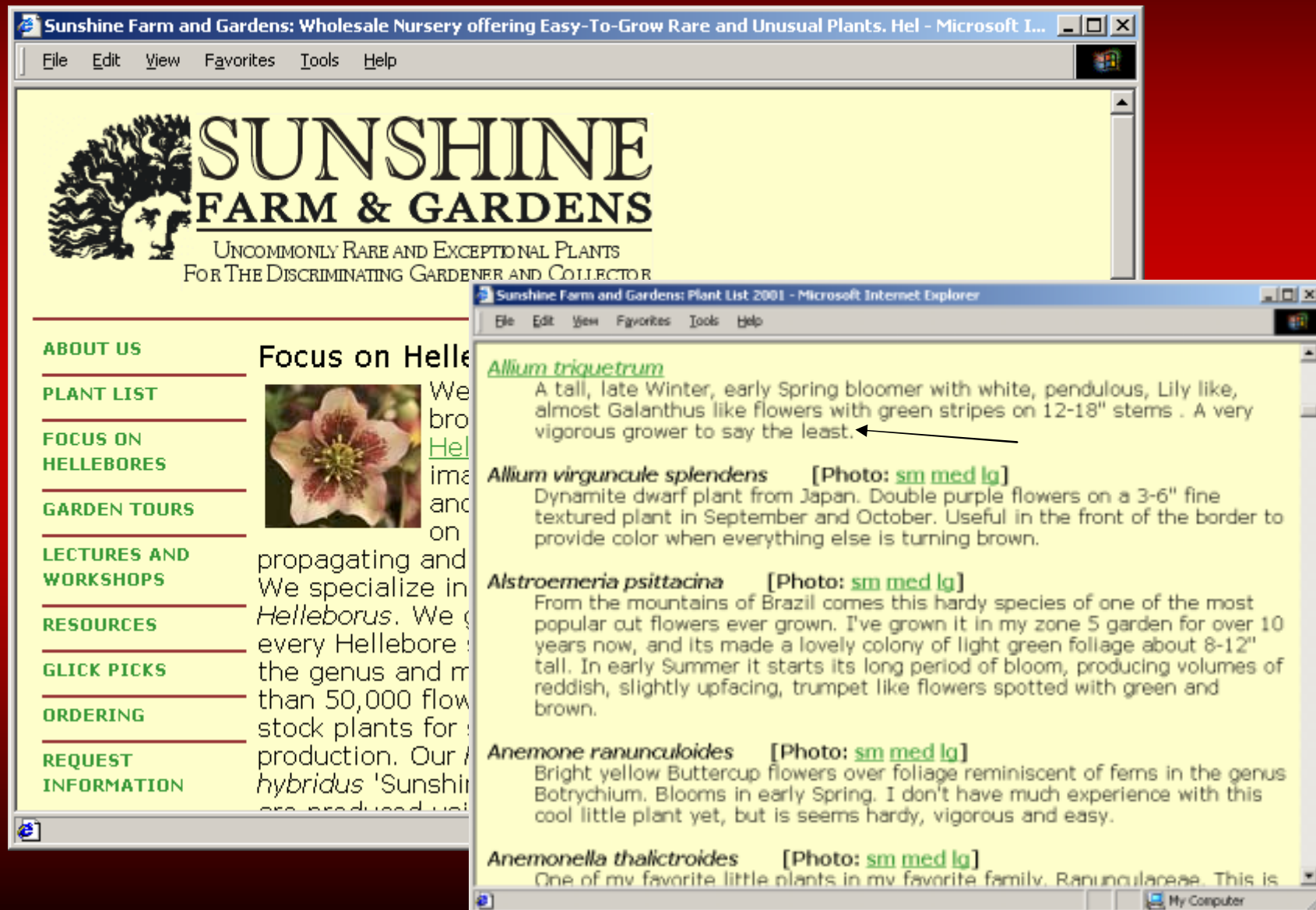
All responses should be sent directly to the submitter.

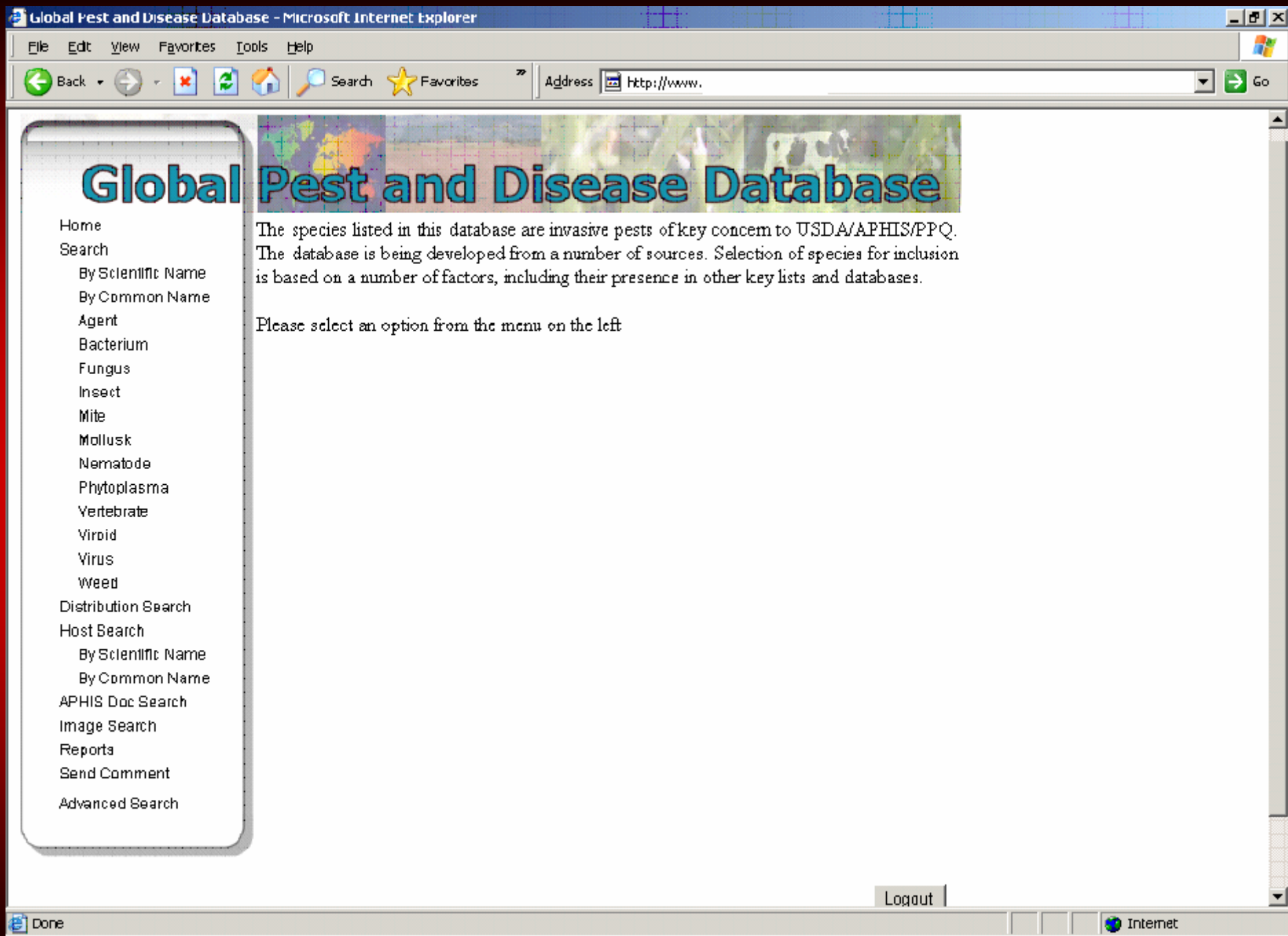
## Data Flow Within AIMS



# Internet Surveillance

One Example:





# WHY?

## PPQ Databases/Tracking Systems

- **ACE - Automated Commercial Environment**
- **ACS - Automated Commercial System**
  - **AMS - the Automated Manifest System**
  - **ABI - the Automated Broker Interface**
- **AES - Automated Export System**
- **APHIS Regulated Pest List**  
<http://www.aphis.usda.gov/ppq/regpestlist/>
- **APIS - Advance Passenger Information System**
- **AQIM - Agricultural Quarantine Inspection Monitoring**
- **ATS - Automated Targeting System**
- **EAN - Emergency Action Notification Database**
- **HTS - Harmonized Tariff Schedule**
- **IBIS - Interagency Border Inspection System**
- **ITDS - International Trade Data System**
- **NAPIS - National Agricultural Pest Information System**
- **NAPPO Phytosanitary Alert System**
- **New Pest Advisory Group**
- **OMR Data Warehouse**
- **PIN-OPS - Port Information Network - Operations**
- **PIN- 309 - Port Information Network - 309 module**
- **PRA Tracking Database**
- **Selectivity**
- **Smuggling Interdiction and Trade Compliance Bulletin Board**
- **TECS - Treasury Enforcement Communication System**
- **Vessel Garbage Violation Database**
- **Violation Databases**
- **WADS - Work Accomplishment Data System**

# Global Pest and Disease Database

[Home](#)

[Search](#)

[By Scientific Name](#)

[By Common Name](#)

[Agent](#)

[Bacterium](#)

[Fungus](#)

[Insect](#)

[Mite](#)

[Mollusk](#)

[Nematode](#)

[Phytoplasma](#)

[Vertebrate](#)

[Viroid](#)

[Virus](#)

[Weed](#)

[Distribution Search](#)

[Host Search](#)

[By Scientific Name](#)

[By Common Name](#)

[APHIS Doc Search](#)

[Image Search](#)

[Reports](#)

[Send Comment](#)

[Advanced Search](#)

GPDD Banner

## Pest Search By Common Name

Select type of Report you want to see :

☒ Full Report

☐ Sub Report

(Select a Pest Type)

[Agent](#)

[Bacterium](#)

[Fungus](#)

[Insect](#)

[Mite](#)

[Mollusk](#)

[Nematode](#)

[Phytoplasma](#)

[Viroid](#)

[Virus](#)

[Weed](#)

(Now, Select the Pest)

[A Rust](#)

[Black Rot](#)

[Black Stem Rust](#)

[Blight](#)

[Brown Blight](#)

[Brown Rot of Fruit](#)

[Brown Spot of Corn](#)

[Brown Spot of Rice](#)

[Brown Stripe Downy Mildew of Maize](#)

[Cereal Mildew](#)

[Cherry-Spruce Rust](#)

go

[Logout](#)

Send us an email if you have any comments about this page 

## **The GPDD is...**

- a data resource that combines unique information with links to other relevant databases to build user-friendly and comprehensive exotic pest profiles

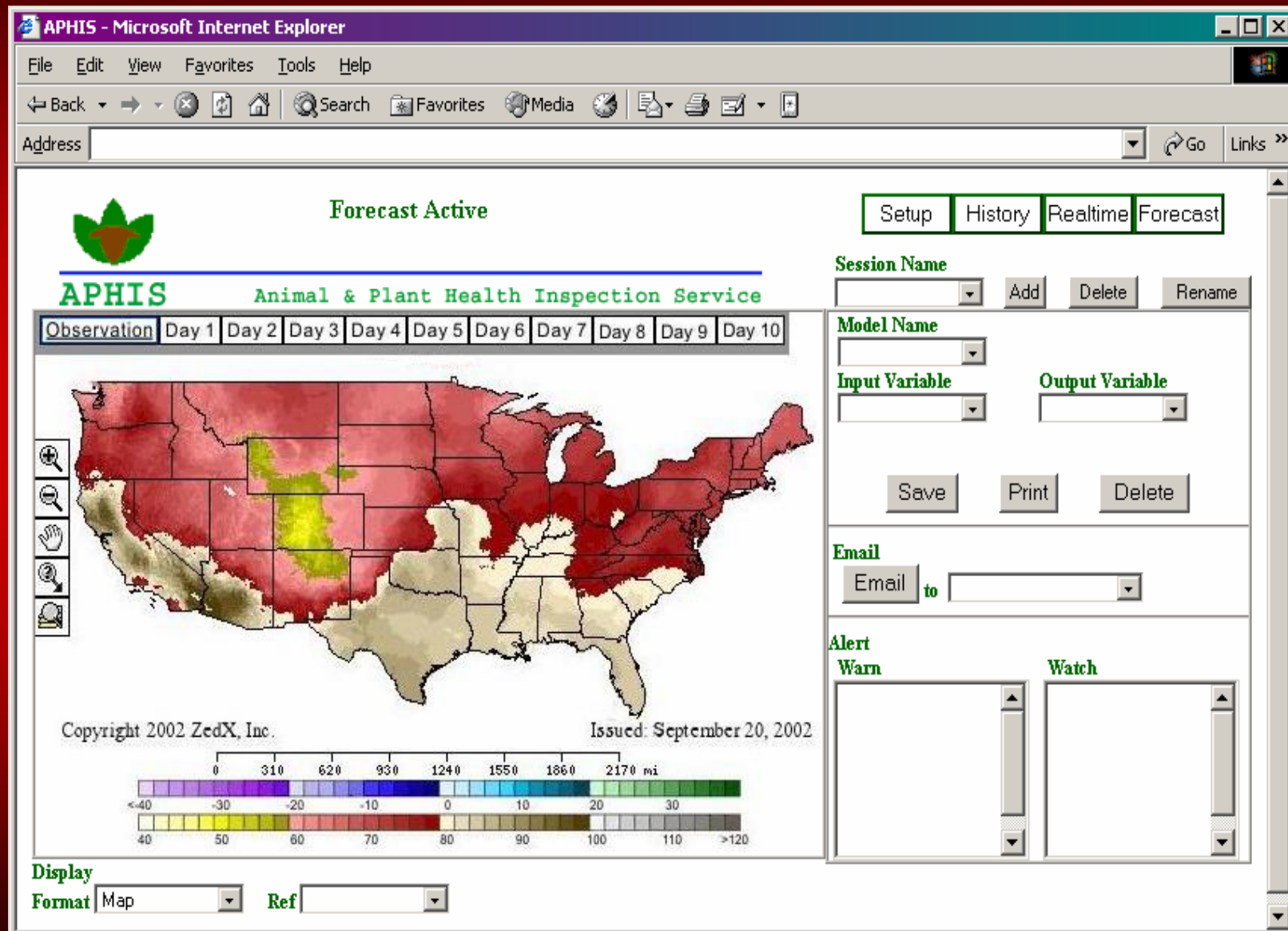
## **The GPDD is NOT...**

- duplicative of existing information systems

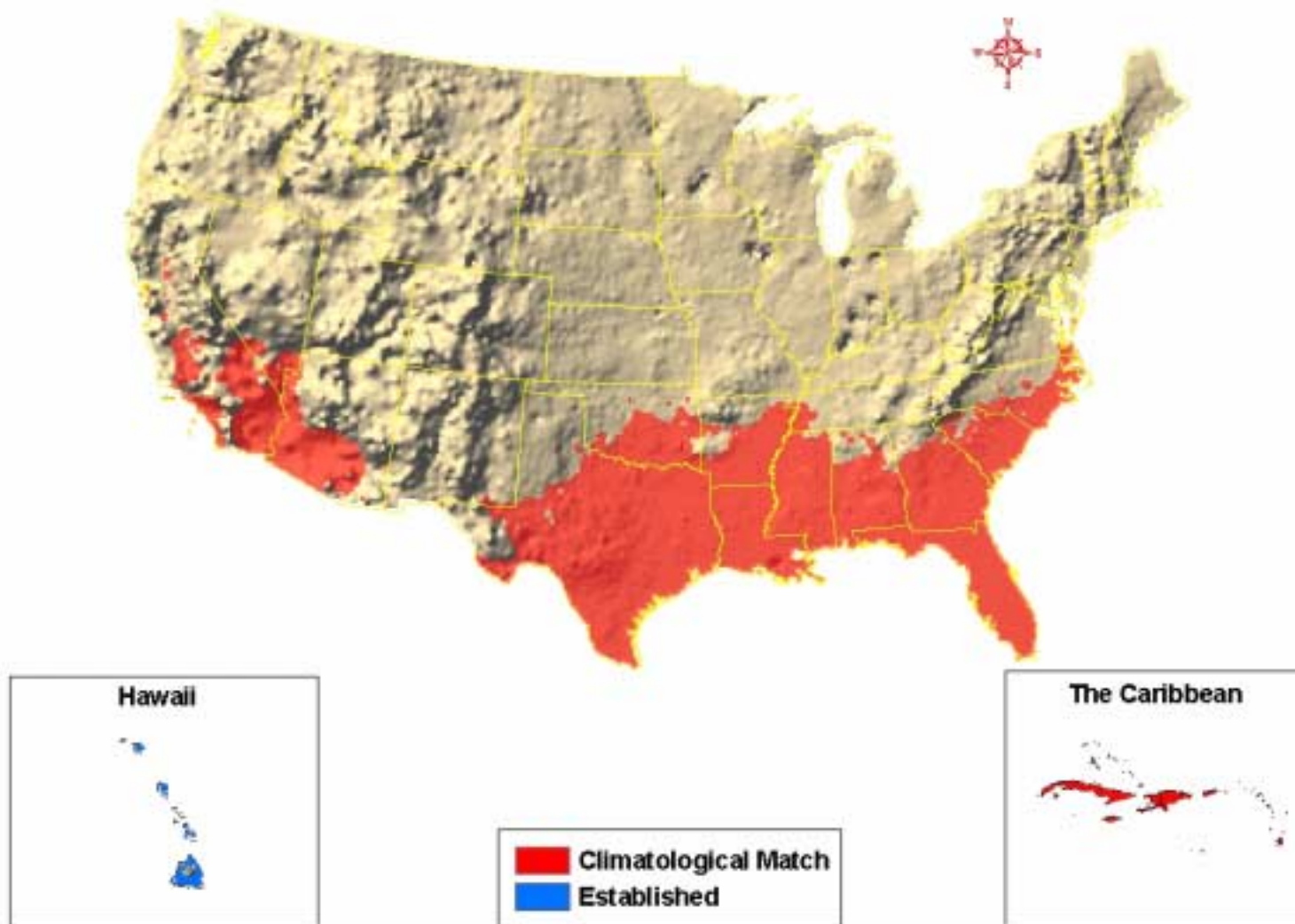
# **Global Pest and Disease Database**

- **Establishes a global ‘list’ of pests not known to occur in the U.S.**
- **Assembles the relevant information for each pest into an integrated, user-friendly database**
- **Utilizes the assembled information to rank pests into quarantine risk groups for use in regulatory decision making**
- **Links various database efforts worldwide**

# Interface Predictive Map Output



## Predicted Range of the Giant African Land Snail





- ☒ robust, +/- teeth, with excrescences
- ☒ serrate, 3-segmented
- ☒ robust, chelate-lobate
- ☒ elongate, slender, 3 segments
- ☒ chelate-edentate or tong-like
- ☒ shear-like, swollen
- ☒ regressed fixed digit
- ☒ slicing
- ☒ hook-like
- ☒ needle-like
- ☒ whip-like stylettes

Taxa Discarded: 10

- ☒ Ixodida - ticks
- ☒ Trigyr
- ☒ Heter
- ☒ Astign
- ☒ Eupoc
- ☒ Labid
- ☒ Anysti
- ☒ Paras
- ☒ Raphi
- ☒ Heter

Opilioacariformes (-Noto...



relativ  
ds, cl  
tives

Character States Chosen: 1

5. Cheliceral form (female) - robust, chelate-dentate, w/o excrescences

☐ Don't skip

**chelate-dentate**

robust, chelate-dentate, w/o excrescences

robust, +/- teeth, with excrescences

serrate, 3-segmented

robust, chelate-lobate

elongate, slender, 3 segments

chelate-edentate or tong-like

Taxa Remaining: 31

- ☒ Enarthronota - enarthronote oribatids
- ☒ Mixonomata - box mites and relatives
- ☒ Desmonomata - nothroids and relatives
- ☒ Euoribatida (Brachypylina) - oribatid, moss or beetle mites
- ☒ Oribatida larvae, nymphs