



Valsts augu
aizsardzības dienests

Plant health system in Latvia

Kristīne Lifānova

Director of State Plant Protection Service

kristine.lifanova@vaad.gov.lv



Valsts augu
aizsardzības dienests



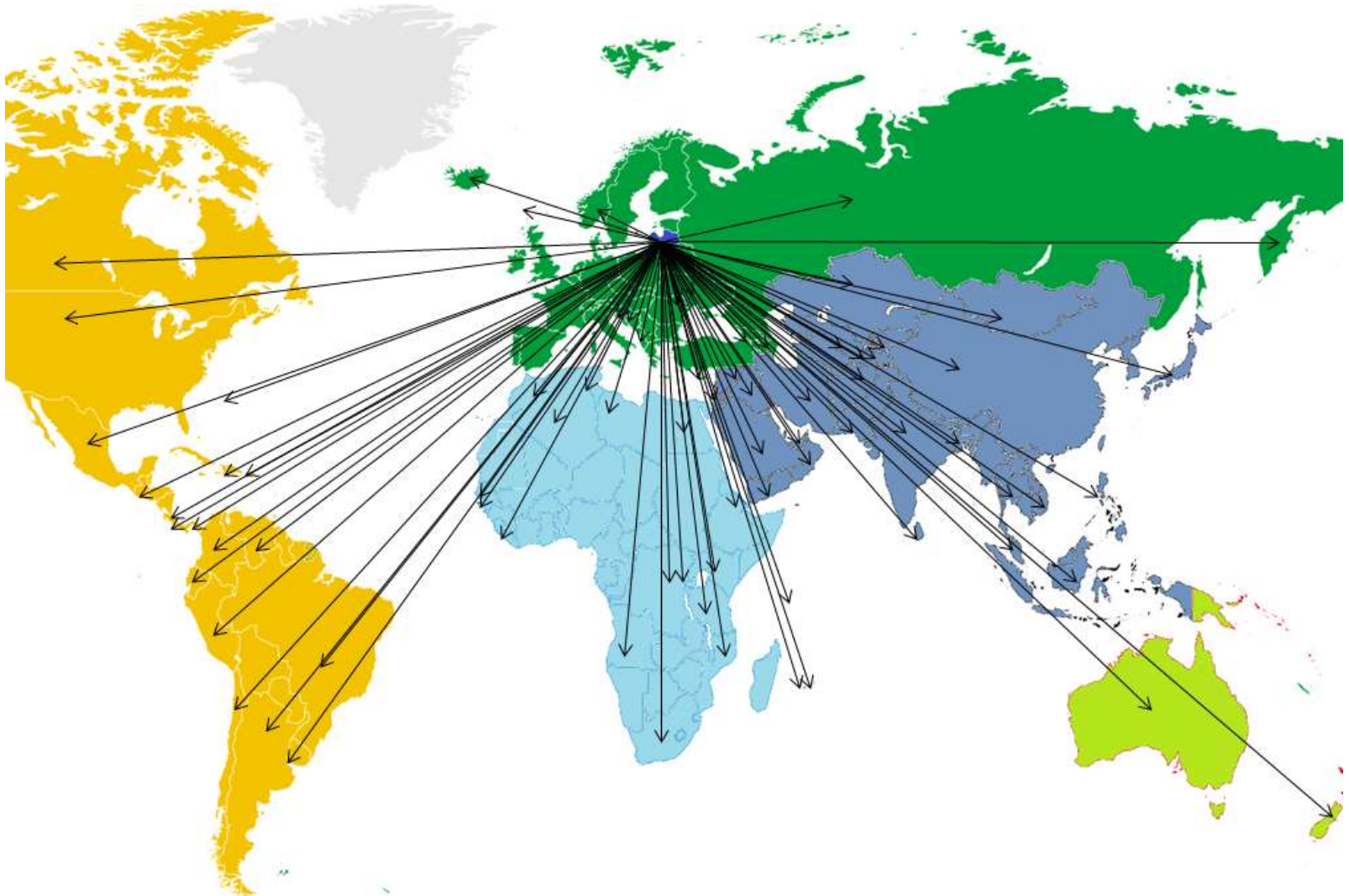
Forests 54%
Agricultural
land 36%



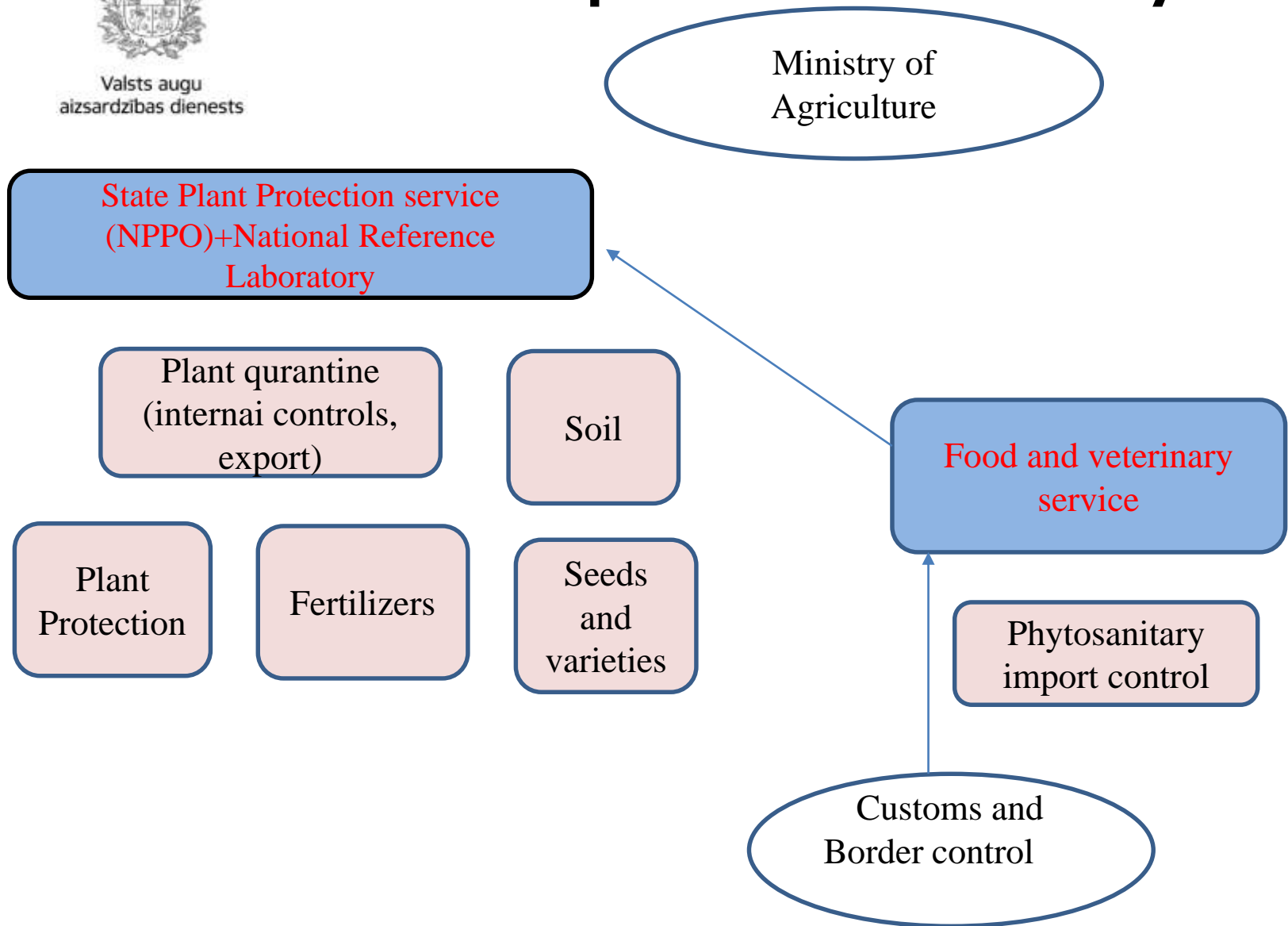


Valsts augu
aizsardzības dienests

Export to more than 100 countries



Plant quarantine control system





Valsts augu
aizsardzības dienests

State Plant Protection service

Inspections, Surveillance, Monitoring

Export, re-export, issuing phytosanitary
certificates

Implementing phytosanitary measures

Pest Risk analyses

Keeping different kinds of registers

Notification system

Pest Free areas,

Protected zone, Plant passport





Valsts augu
aizsardzības dienests

State Plant Protection service

Collecting import
requirements of other
countries

Training of inspectors,
non-EU countries

Planning, collecting
and analysis of
inspection results

Instruction and
guidelines for
inspectors

IPPC, EPPO, EU



Import from non-EU countries





Valsts augu
aizsardzības dienests

Legislation

EU legislation

New + fully harmonized regime

Regulation (EU) 2016/2031 of the European Parliament and the Council on protective measures against pests of plants

new Plant Health Regulation

Regulation (EU) 2017/625 REGULATION (EU) 2017/625 of the European Parliament and the Council on protective measures on official controls (import)

applicable from 14 December 2019



Valsts augu
aizsardzības dienests

Key issues for your attention

- by early detection at import or in the field when eradication is still achievable
- by increasing the % of successful eradication campaigns
- **IPPC + ISPMS BASED**
- Priority Listing of most dangerous QP for the EU
- CRISIS PREPAREDNESS
- Contingency plans for all priority pests
- Simulation exercises
- Awareness campaigns





Valsts augu
aizsardzības dienests

Regulated plants

From 14 December 2019, all plants (including living parts of plants) will need to be accompanied by a phytosanitary certificate to enter into the EU, unless they are listed in **Commission Implementing Regulation (EU) 2018/2019** as exempted from this general requirement (not requiring to be accompanied by a phytosanitary certificate).

Currently, the list of plants exempted from the obligation to carry a phytosanitary certificate from 14 December 2019 are the following fruits: pineapples, coconuts, durians, bananas and dates



Valsts augu
aizsardzības dienests

High risk plants

The Plant Health Law increases the prevention against the introduction of new pests via imports from third countries. [Commission Implementing Regulation \(EU\) 2018/2019](#) establishes the list of high risk plants the introduction of which into the EU territory will be provisionally prohibited from 14 December 2019 until a full risk assessment has been carried out.

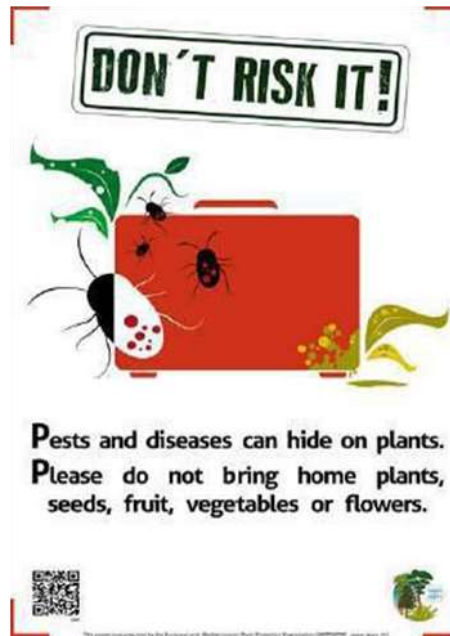
The rules concerning the procedure to be followed in order to carry out the risk assessment of high risk plants are detailed in [Commission Implementing Regulation \(EU\) 2018/2018](#).



Valsts augu
aizsardzības dienests

Passengers' attention

In principle, passengers will no longer be allowed to introduce into the EU plants/plant products from non-EU countries if they are not accompanied by a phytosanitary certificate.





Valsts augu
aizsardzības dienests

More information

SANTE-G1-PLANT-HEALTH@ec.europa.eu

[http://europa.eu/rapid/press-release MEMO-16-4310_en.htm#_ftn1](http://europa.eu/rapid/press-release_MEMO-16-4310_en.htm#_ftn1)

http://ec.europa.eu/food/plant/plant_health_biosecurity/legislation_en



Valsts augu
aizsardzības dienests

Information Technology

For import – EU TRACES (IMSOC) system CHED-PP
(Notification of phytosanitary consignment, records about control, custom system)

For notifications - EU TRACES (IMSOC) system IMSOC,
EPPO

For export and internal controls, registers - National
cop surveillance information system (KUVIS)

Publiskā Kultūraugu Uzraudzības Valsts Informācijas Sistēma

Valsts augu aizsardzības dienests veic valsts kontroli un uzraudzību augu aizsardzības līdzekļu, mēslošanas līdzekļu, augu un augu produktu, augu šķirņu, sēkļu un stādāmo materiālu aprīes jomā.

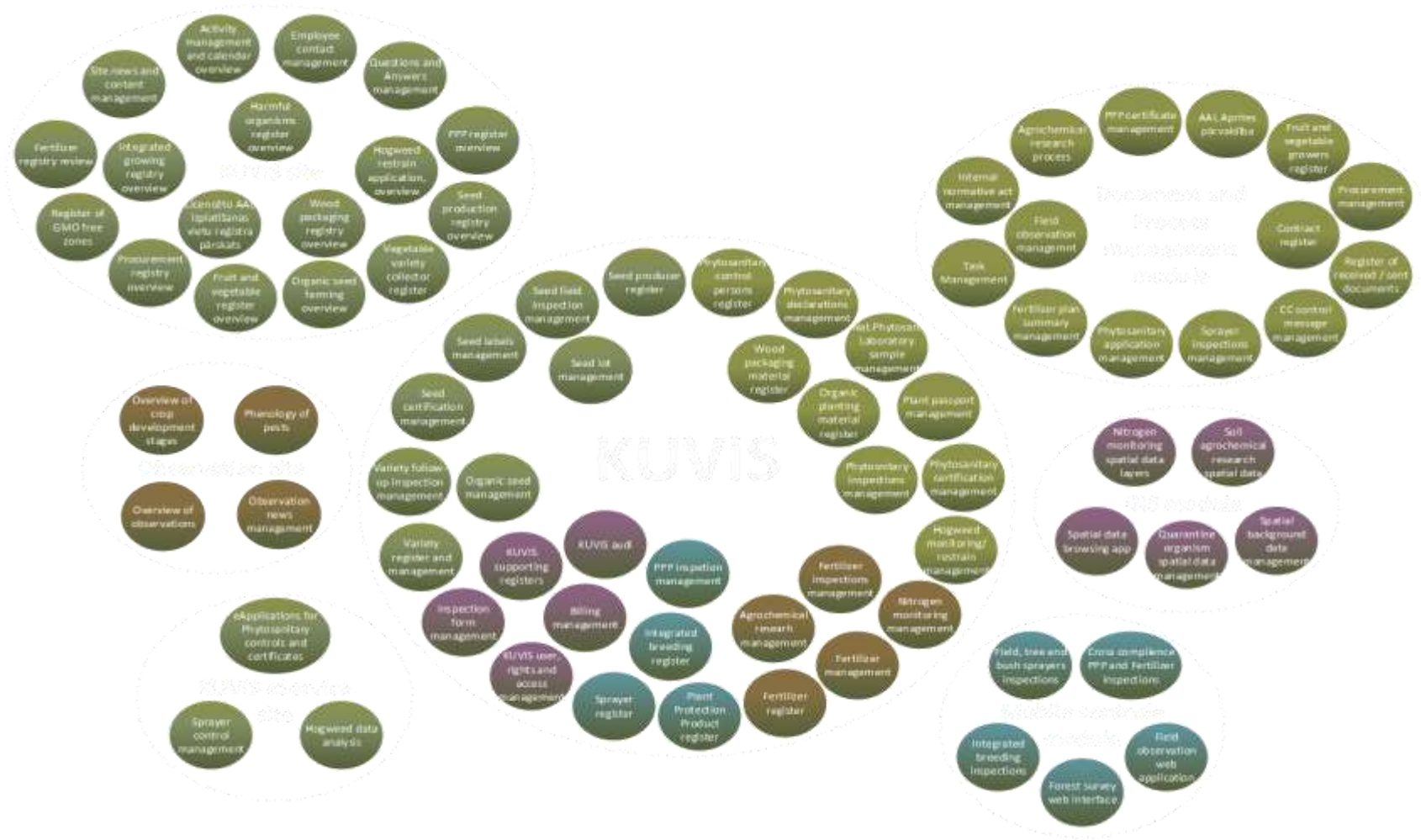
Lietotāja vārds:

Parole:



Valsts augu
aizsardzības dienests

National crop surveillance information system



INTEGRĒTĀ AUGU AUDZĒŠANA UN KAITĪGO ORGANISMU MONITORINGS

- KARTE
- JAUNUMI
- INTEGRĒTĀ AUDZĒŠANA
- KULTŪRAUGU FENOLOĢIJA
- KAITĒKĻU FENOLOĢIJA
- AUGU SLIMĪBU ATTĪSTĪBAS ĪPATNĪBAS
- NEZĀĻU ATTĪSTĪBAS ĪPATNĪBAS

Jaunumi



15.09.2016
 Šogad biežāk sastopami vilkābeļu lapkodes kāpuru radīti bojājumi



26.08.2016
 Jāierobežo vīngliemežu un kaitgliemežu izplatība, pirms tie ir sadējuši oļiņas



16.08.2016
 Alternatīvas augu slimību un kaitēkļu ierobežošanā

vecākas ziņas

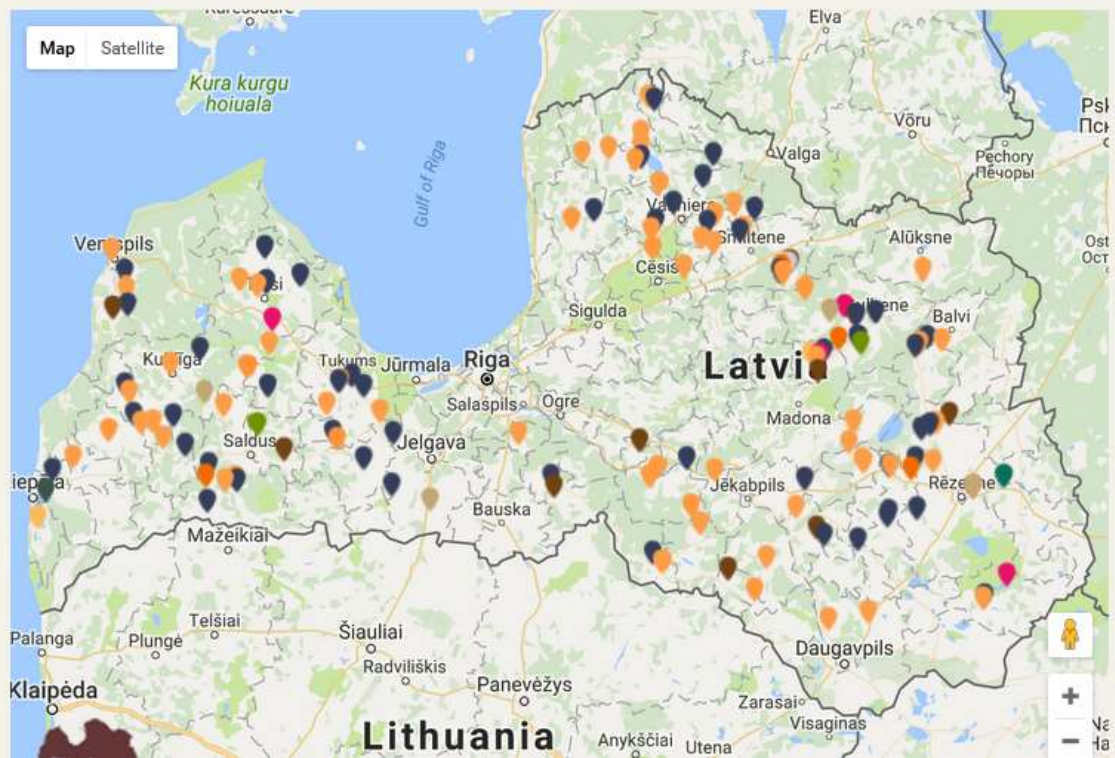
KAITĪGO ORGANISMU DATU BĀZE

Augu aizsardzības līdzekļi kaitīgo

Kultūraugu novērojumi kaitīgo organismu konstatēšanai

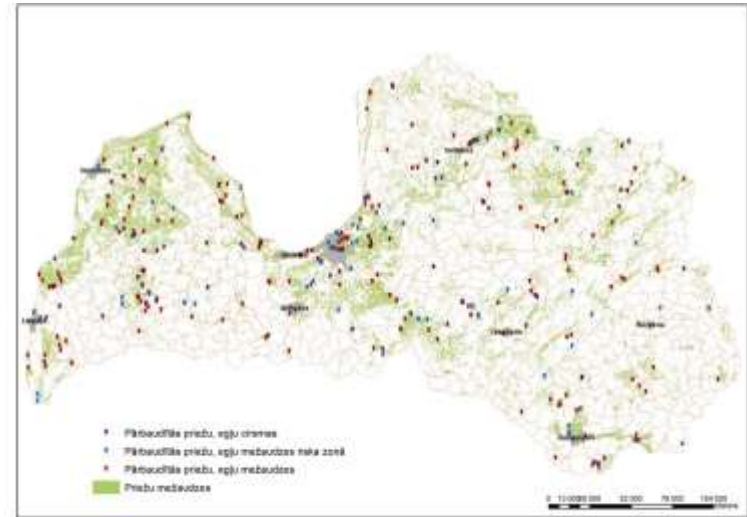
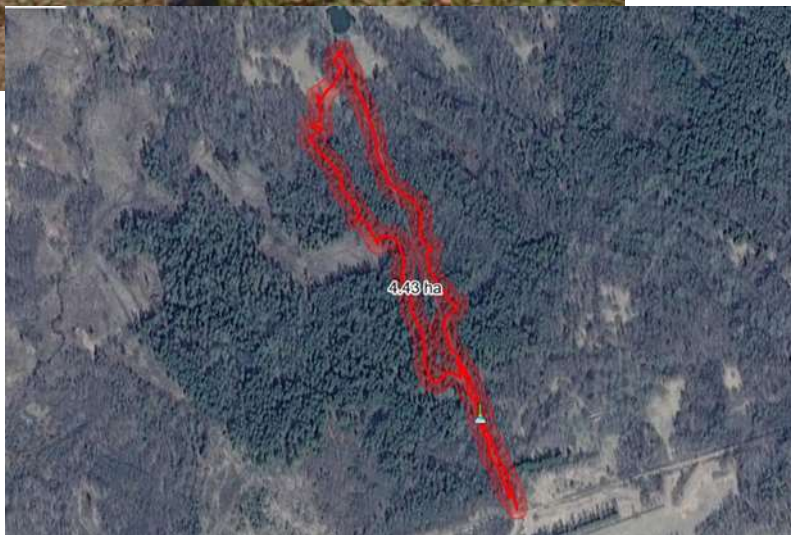


Periods no: 19.09.2016 | Periods līdz: 29.09.2016 | Kultūraugs: Visi ... | Kaitīgais organisms: Visi ... **Meklēt**





Valsts augu
aizsardzības dienests



To be in progress



Valsts augu
aizsardzības dienests

E-phyto

Elektroniskā pieteikuma forma

- Klients aizpilda datus par saņēmēju un par kravu.
- Ja iesniegums uz papīra, šo daļu aizpilda inspektors

Includes the whole process:

- submission of an application
- task to the inspector
- inspection act of the inspector
- laboratory
- certificate
- invoice
- Accounting
- Client interface



Valsts augu
aizsardzības dienests

Public Awareness



Meetings

Newspaper, leaflets,
videos

Public participation —
Consultation on PROJECTS

Open door days

Seminars





Valsts augu
aizsardzības dienests





Valsts augu
aizsardzības dienests





Valsts augu
aizsardzības dienests

Thank you for your attention!

